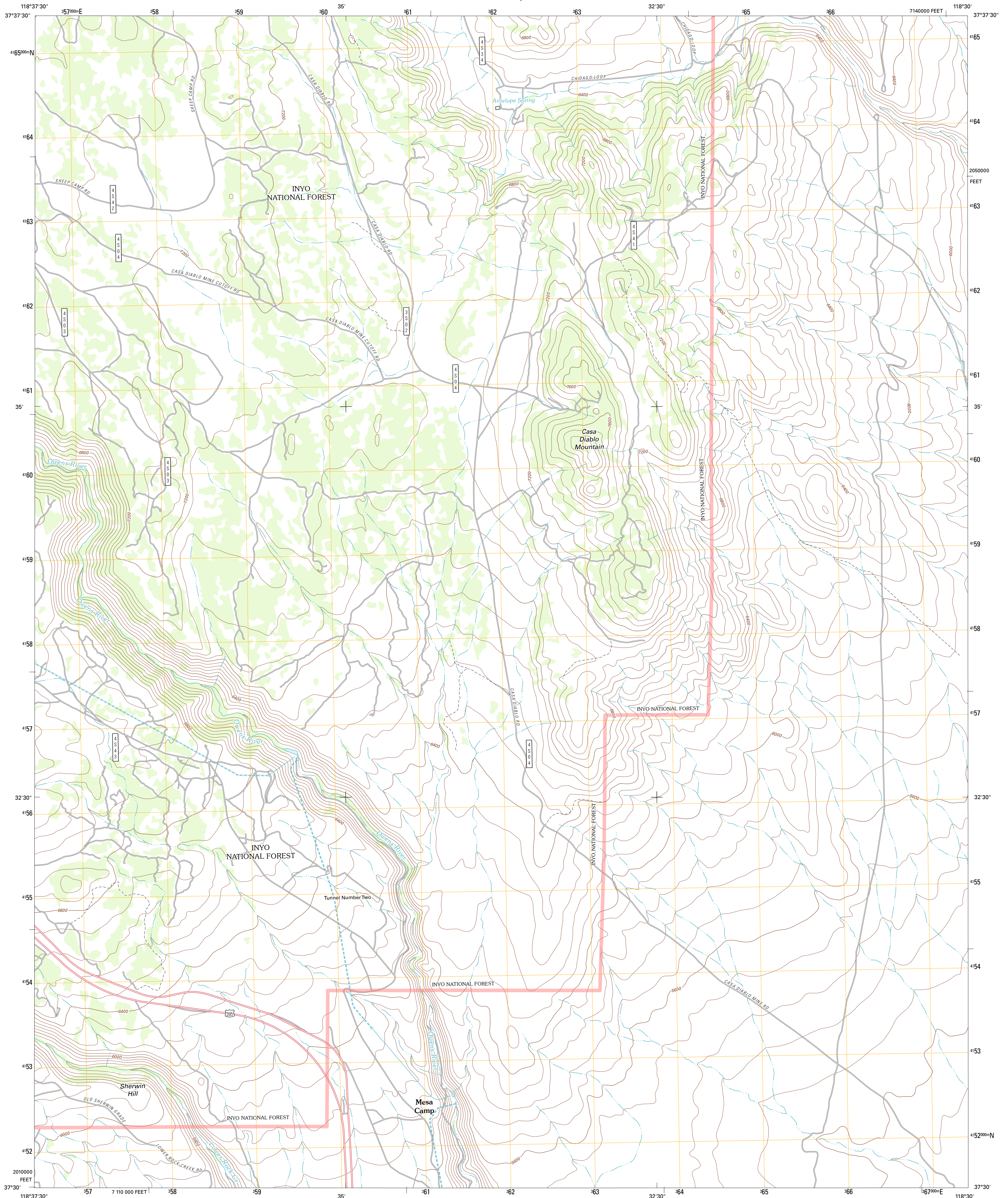




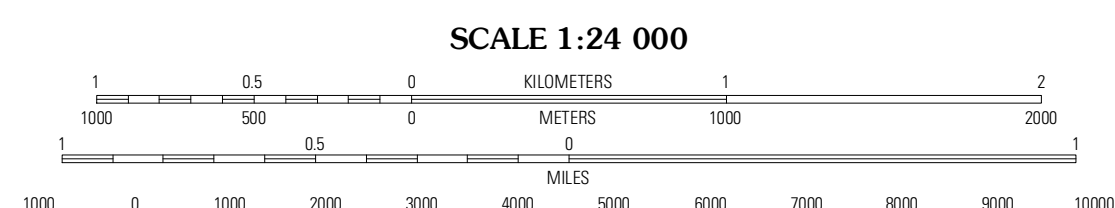
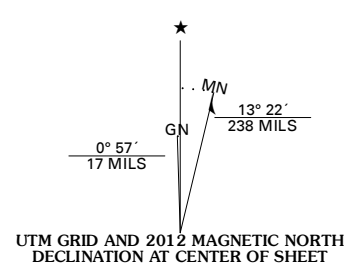
U.S. DEPARTMENT OF THE INTERIOR
U. S. GEOLOGICAL SURVEY



CASA DIABLO MOUNTAIN QUADRANGLE
CALIFORNIA-MONO CO.
7.5-MINUTE SERIES



Produced by the United States Geological Survey
North American Datum of 1983 (NAD83)
World Geodetic System of 1984 (WGS84). Projection and
1 000-meter grid: Universal Transverse Mercator, Zone 11S
10 000-foot ticks: California Coordinate System of 1983
(zone 3)



QUADRANGLE LOCATION

Waterson Canyon	Banner Ridge	Hammill Valley
Toms Place	Casa Diablo Mountain	Chidago Canyon
Mount Morgan	Rovana	Fish Slough

ROAD CLASSIFICATION

	Interstate Route		State Route
	US Route		Local Road
	Ramp		4WD
	FS Primary Route		FS Passenger Route
	FS High Clearance Route		State Route

Check with local Forest Service unit for current travel conditions and restrictions.

Imagery:.....NAP, July 2010
Roads:.....©2006-2011 TomTom
Roads within US Forest Service Lands:.....FS Topo Data
with limited Forest Service updates, 2009
Names:.....GNIS, 2011
Hydrography:.....National Hydrography Dataset, 2010
Contours:.....National Elevation Dataset, 2001
Boundaries:.....Census, IBWC, IBC, USGS, 1972 - 2010

U.S. National Grid	100,000m Square ID
LB	
Grid Zone Designation	11S

CONTOUR INTERVAL 80 FEET
NORTH AMERICAN VERTICAL DATUM OF 1988

This map was produced to conform with the
National Geospatial Program US Topo Product Standard, 2011.
A metadata file associated with this product is draft version 0.6.1

CASA DIABLO MOUNTAIN, CA
2012

ADJOINING 7.5 QUADRANGLES