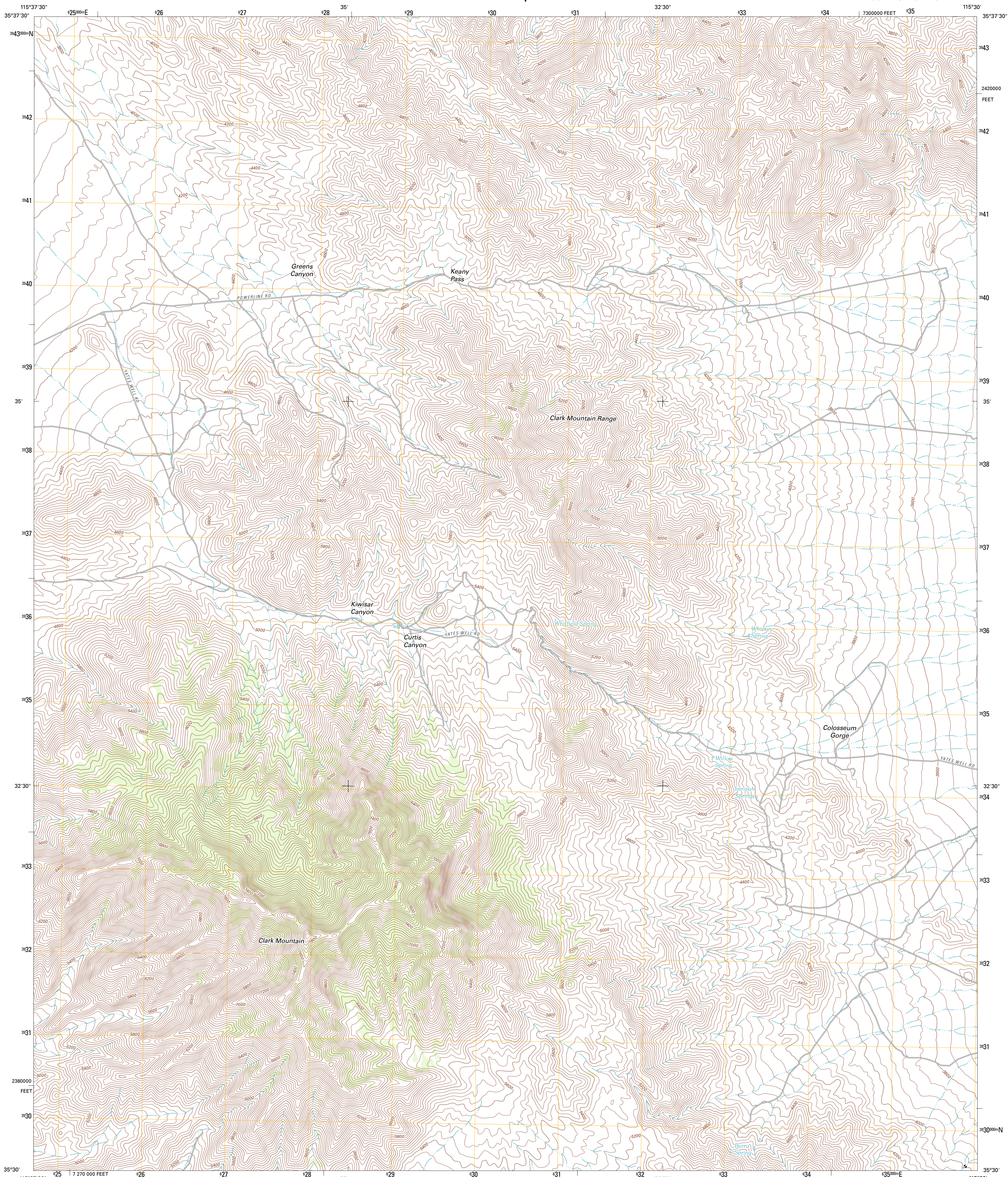




U.S. DEPARTMENT OF THE INTERIOR
U. S. GEOLOGICAL SURVEY



CLARK MOUNTAIN QUADRANGLE
CALIFORNIA-SAN BERNARDINO CO.
7.5-MINUTE SERIES



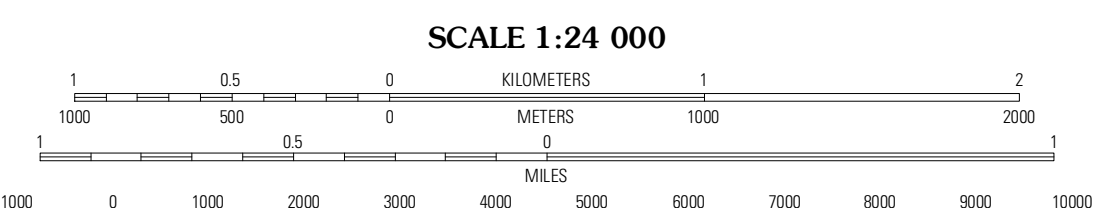
Produced by the United States Geological Survey
North American Datum of 1983 (NAD83)
World Geodetic System of 1984 (WGS84). Projection and
1 000-meter grid: Universal Transverse Mercator, Zone 11S
10 000-foot ticks: California Coordinate System of 1983
(zone 5)

Imagery.....NAIP, April 2010 - May 2010
Roads.....©2006-2011 TomTom
Names.....GNIS, 2011
Hydrography.....National Hydrography Dataset, 2010
Contours.....National Elevation Dataset, 2006
Boundaries.....Census, BWC, IBC, USGS, 1972 - 2010

UTM GRID AND 2012 MAGNETIC NORTH DECLINATION AT CENTER OF SHEET

U.S. National Grid
100 000-m Square ID
PV
Grid Zone Designation
11S

Magnetic North
12° 15'
218 MILES
0° 50'
15 MILES



CONTOUR INTERVAL 40 FEET
NORTH AMERICAN VERTICAL DATUM OF 1988

This map was produced to conform with the
National Geospatial Program US Topo Product Standard, 2011.
A metadata file associated with this product is draft version 0.6.1



QUADRANGLE LOCATION

Mesquite Mountains	Mesquite Lake	State Line Pass
Pachalca Spring	Clark Mountain	Ivanpah Lake
Valley Wells	Mescal Range	Mineral Hill

ROAD CLASSIFICATION

Interstate Route (thick red line)
US Route (red line)
Ramp (red line with blue triangle)

State Route (grey line)
Local Road (thin grey line)
4WD (dashed grey line)

CLARK MOUNTAIN, CA
2012

ADJOINING 7.5' QUADRANGLES