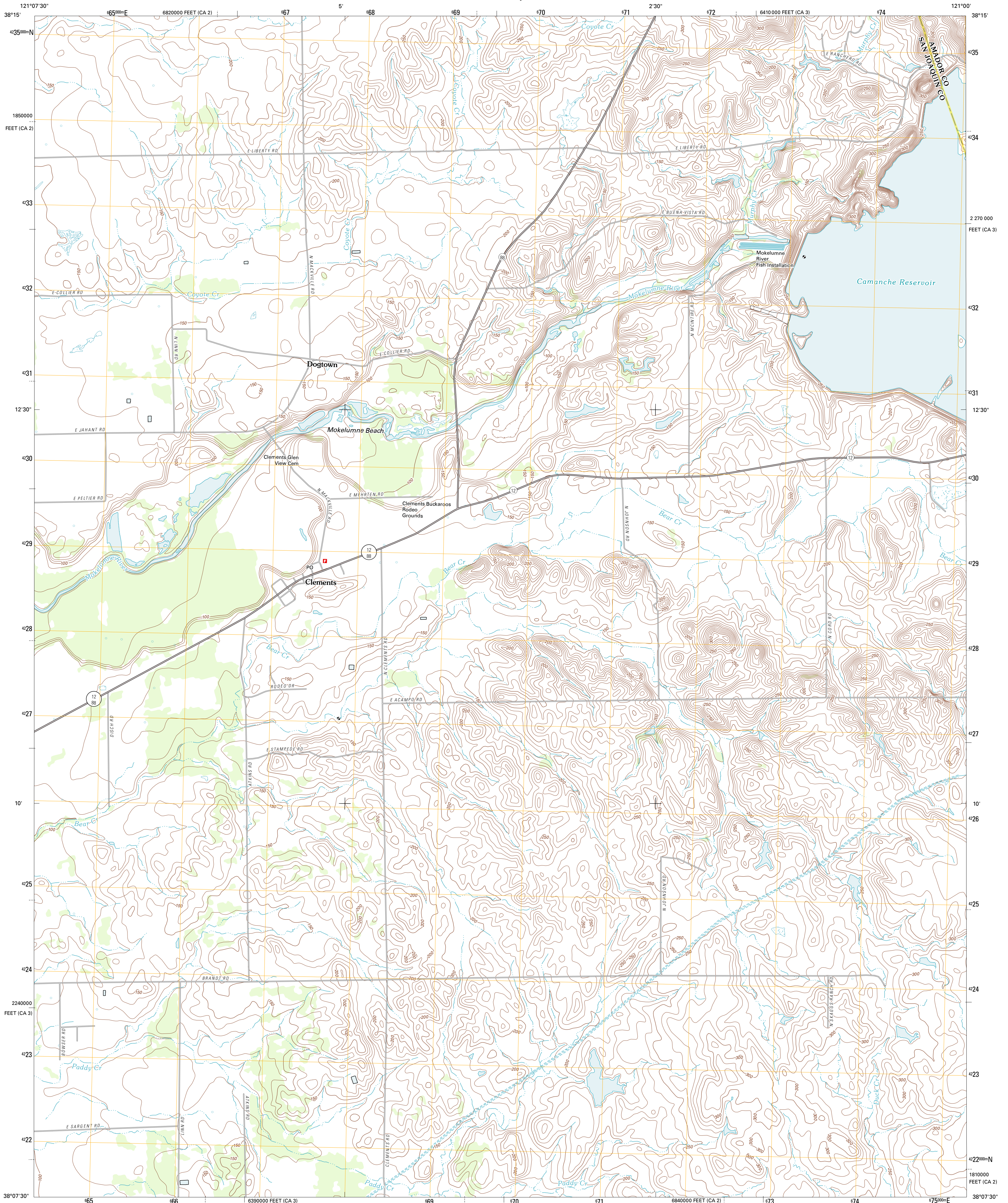




U.S. DEPARTMENT OF THE INTERIOR
U. S. GEOLOGICAL SURVEY

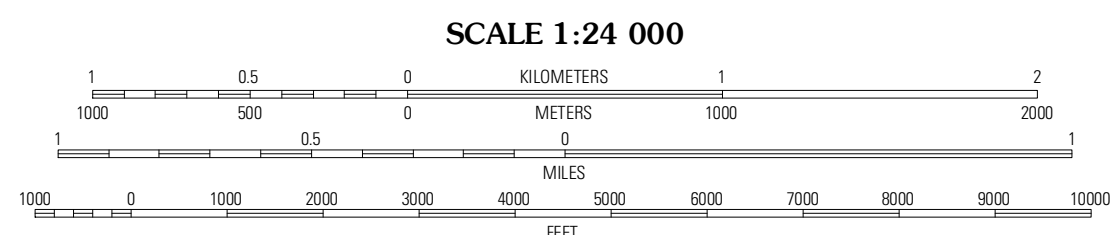
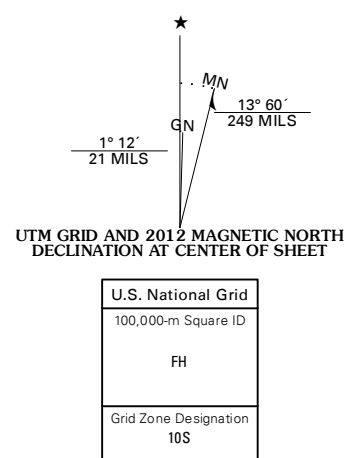


CLEMENTS QUADRANGLE
CALIFORNIA
7.5-MINUTE SERIES



Produced by the United States Geological Survey
North American Datum of 1983 (NAD83)
World Geodetic System of 1984 (WGS84); Projection and
1 000-meter grid; Universal Transverse Mercator, Zone 10S
10 000-foot ticks; California Coordinate System of 1983
(zones 3 and 2)

Imagery.....NIP, July 2010
Roads.....©2006-2011 TomTom
Names.....GNIS, 2011
Hydrography.....National Hydrography Dataset, 2010
Contours.....National Elevation Dataset, 2008
Boundaries.....Census, IBWC, IBC, USGS, 1972 - 2010



CONTOUR INTERVAL 10 FEET
NORTH AMERICAN VERTICAL DATUM OF 1988

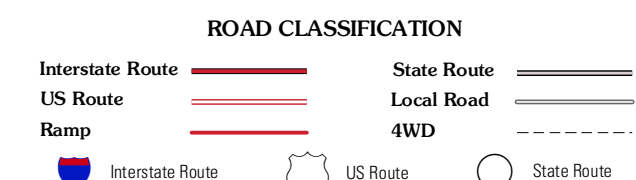
This map was produced to conform with the
National Geospatial Program US Topo Product Standard, 2011.
A metadata file associated with this product is draft version 0.6.1



QUADRANGLE LOCATION

Clay	Goose Creek	Ione
Lockeford	Clements	Wallace
Waterloo	Linden	Valley Springs SW

ADJOINING 7.5' QUADRANGLES



CLEMENTS, CA
2012