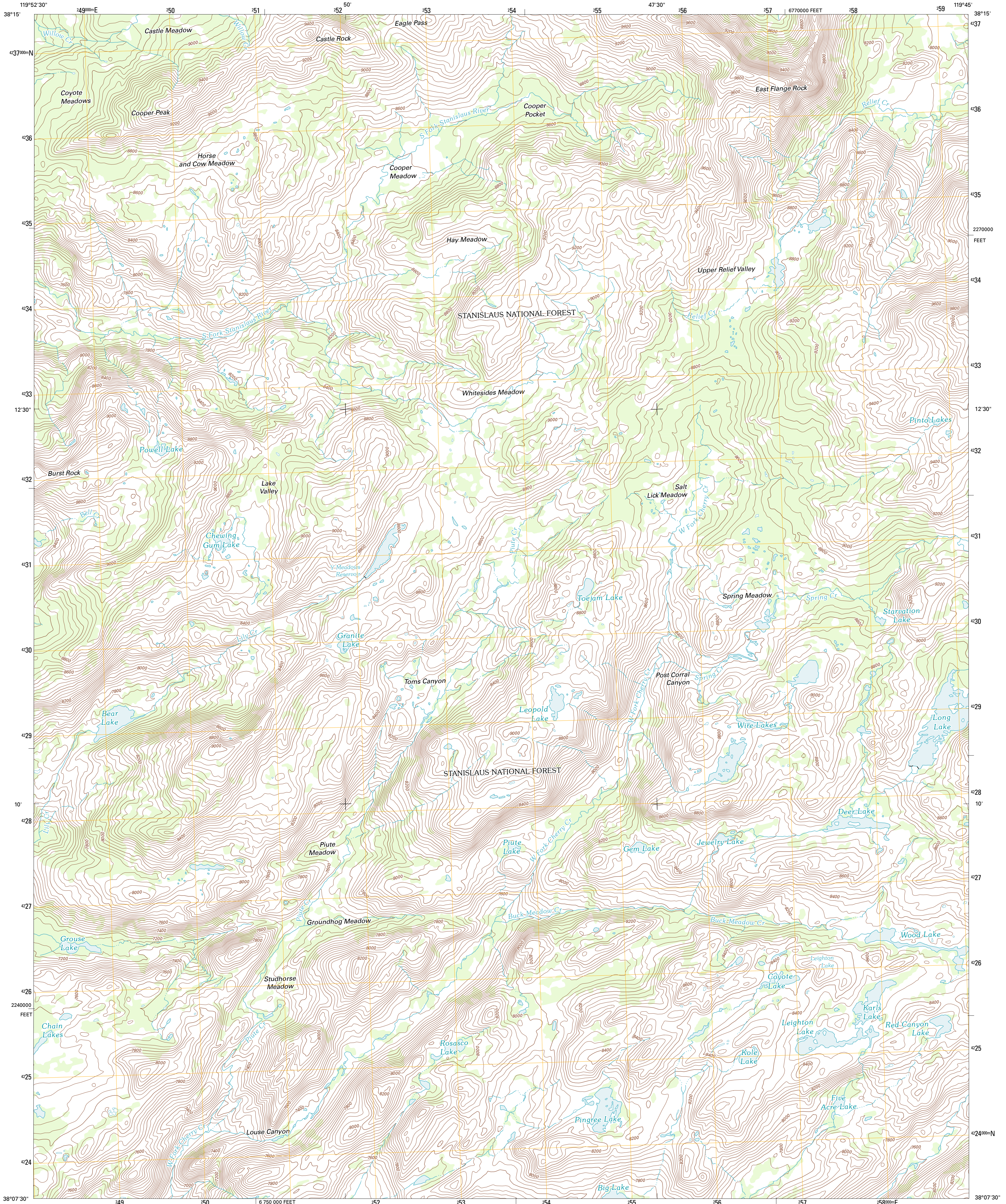




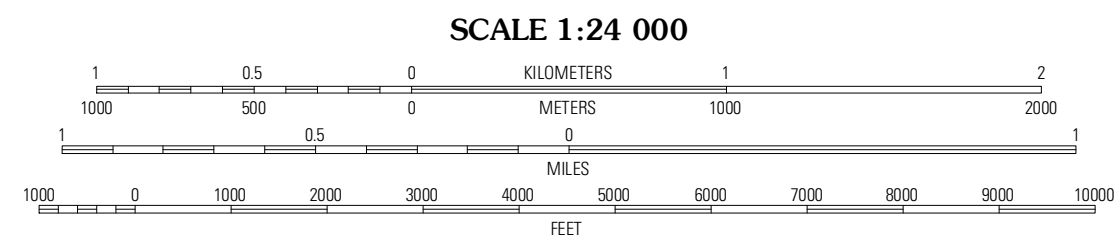
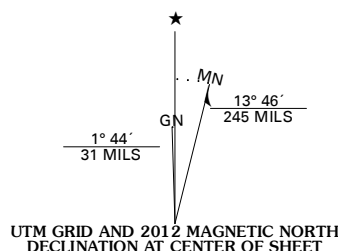
U.S. DEPARTMENT OF THE INTERIOR
U. S. GEOLOGICAL SURVEY



COOPER PEAK QUADRANGLE
CALIFORNIA-TUOLUMNE CO.
7.5-MINUTE SERIES



Produced by the United States Geological Survey
North American Datum of 1983 (NAD83)
World Geodetic System of 1984 (WGS84). Projection and
1 000-meter grid: Universal Transverse Mercator, Zone 11S
10 000-foot ticks: California Coordinate System of 1983
(zone 3)



CONTOUR INTERVAL 40 FEET
NORTH AMERICAN VERTICAL DATUM OF 1988
This map was produced to conform with the
National Geospatial Program US Topo Product Standard, 2011.
A metadata file associated with this product is draft version 0.6.1

Imagery.....N.A.P., July 2010 - August 2010
Roads.....6/2006-2011 TomTom
Roads within US Forest Service Lands.....FSSTPO Data
with limited Forest Service updates, 2009
Names.....GNIS, 2011
Hydrography.....National Hydrography Dataset, 2010
Contours.....National Elevation Dataset, 2001
Boundaries.....Census, IBWC, IBC, USGS, 1972 - 2010

U.S. National Grid 90,000-m Square ID
KC
Grid Zone Designation 11S



QUADRANGLE LOCATION

Donnell Lake	Dardanelle	Sonora Pass
Pincrest	Cooper Peak	Emigrant Lake
Cherry Lake North	Kibbie Lake	Tiltill Mountain

ADJOINING 7.5 QUADRANGLES

ROAD CLASSIFICATION

Interstate Route	State Route
US Route	Local Road
Ramp	4WD
FS Primary Route	US Route
FS Passenger Route	FS High Clearance Route

Check with local Forest Service unit
for current travel conditions and restrictions.

COOPER PEAK, CA
2012