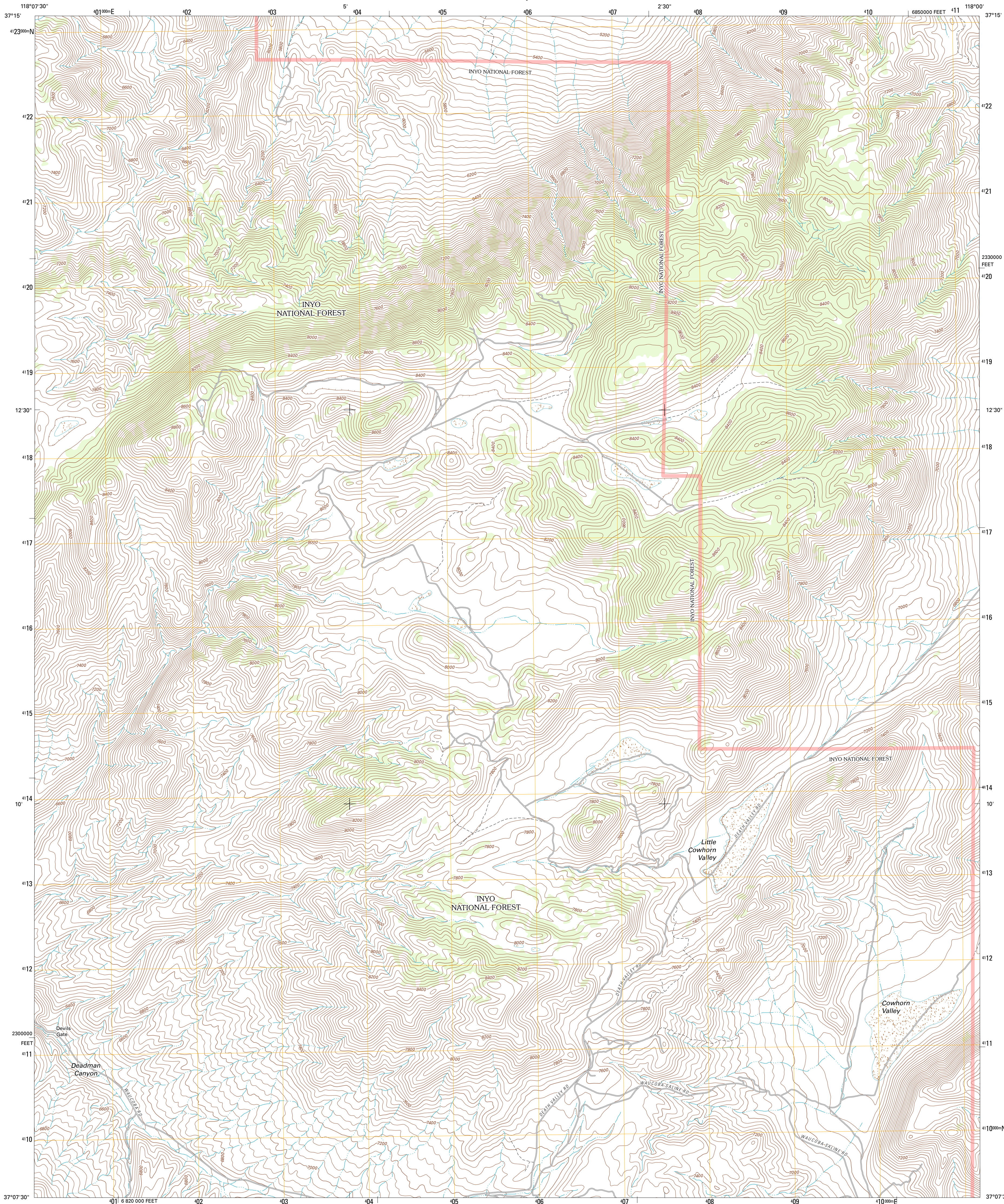




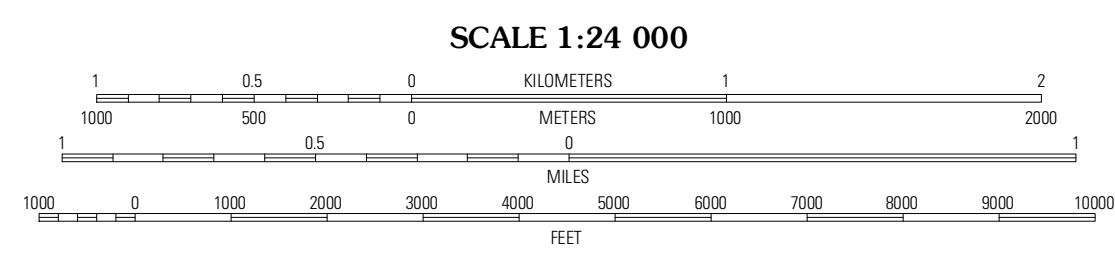
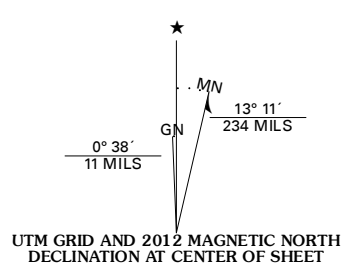
U.S. DEPARTMENT OF THE INTERIOR
U. S. GEOLOGICAL SURVEY



COWHORN VALLEY QUADRANGLE
CALIFORNIA-INYO CO.
7.5-MINUTE SERIES



Produced by the United States Geological Survey
North American Datum of 1983 (NAD83)
World Geodetic System of 1984 (WGS84). Projection and
1 000-meter grid; Universal Transverse Mercator, Zone 11S
10 000-foot ticks; California Coordinate System of 1983
(zone 4)



ROAD CLASSIFICATION

Interstate Route	State Route	FS High Clearance Route
US Route	Local Road	
Ramp	4WD	
FS Primary Route	US Route	
	FS Passenger Route	

Check with local Forest Service unit for current travel conditions and restrictions.

QUADRANGLE LOCATION

Westgard Pass	Deep Springs Lake	Soldier Pass
Uhlmeyer Spring	Cowhorn Valley	Joshua Flats
Timnaha Reservoir	Waucocha Mountain	Waucocha Spring

ADJOINING 7.5' QUADRANGLES

Imagery.....NAP, July 2010 - August 2010
Roads.....©2006-2011 TomTom
Roads within US Forest Service Lands.....FS Topo Data with limited Forest Service updates, 2009
Names.....©GNIS, 2011
Hydrography.....National Hydrography Dataset, 2010
Contours.....National Elevation Dataset, 2001
Boundaries.....Census, IBWC, IBC, USGS, 1972 - 2010

U.S. National Grid
100,000m Square ID
MB
Grid Zone Designation
11S

CONTOUR INTERVAL 40 FEET
NORTH AMERICAN VERTICAL DATUM OF 1988

This map was produced to conform with the National Geospatial Program US Topo Product Standard, 2011. A metadata file associated with this product is draft version 0.6.1

COWHORN VALLEY, CA
2012