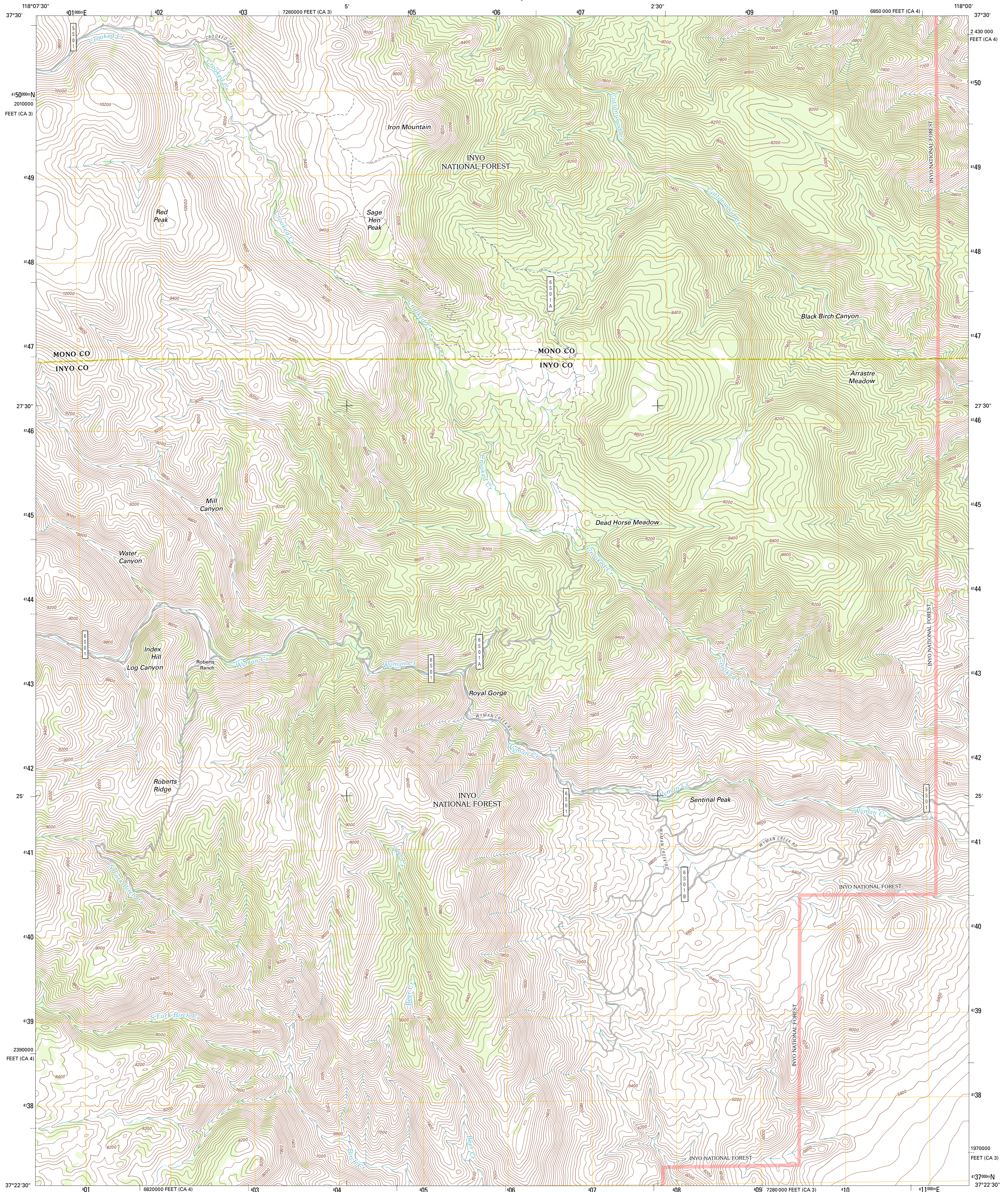




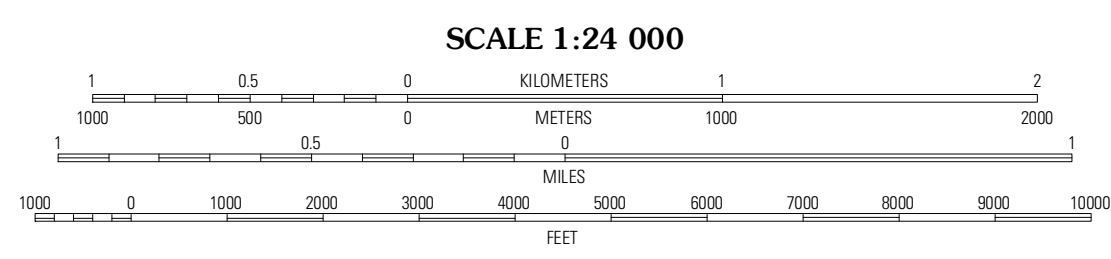
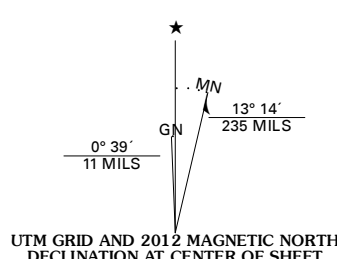
U.S. DEPARTMENT OF THE INTERIOR
U. S. GEOLOGICAL SURVEY



CROOKED CREEK QUADRANGLE
CALIFORNIA
7.5-MINUTE SERIES



Produced by the United States Geological Survey
North American Datum of 1983 (NAD83)
World Geodetic System of 1984 (WGS84). Projection and
1 000-meter grid: Universal Transverse Mercator, Zone 11S
10 000-foot ticks: California Coordinate System of 1983
(zones 4 and 3)



QUADRANGLE LOCATION

Mount Barcroft	Station Peak	Indian Garden Creek
Blanco Mountain	Crooked Creek	Chocolate Mountain
Westgard Pass	Deep Springs Lake	Soldier Pass

ROAD CLASSIFICATION

Interstate Route	State Route
US Route	Local Road
Ramp	4WD
FS Primary Route	FS Passenger Route
FS High Clearance Route	

Check with local Forest Service unit for current travel conditions and restrictions.

CROOKED CREEK, CA
2012

Imagery: N/AIP, July 2010
Roads: ©2006-2011 TomTom
Roads within US Forest Service Lands: ©FS Topo Data with limited Forest Service updates, 2009
Names: ©GNIS, 2011
Hydrography: National Hydrography Dataset, 2010
Contours: National Elevation Dataset, 2001
Boundaries: Census, BWC, IBC, USGS, 1972 - 2010

U.S. National Grid
100,000-m Square ID
MB
Grid Zone Designation
11S

CONTOUR INTERVAL 40 FEET
NORTH AMERICAN VERTICAL DATUM OF 1988

This map was produced to conform with the National Geospatial Program US Topo Product Standard, 2011. A metadata file associated with this product is draft version 0.6.1

ADJOINING 7.5 QUADRANGLES