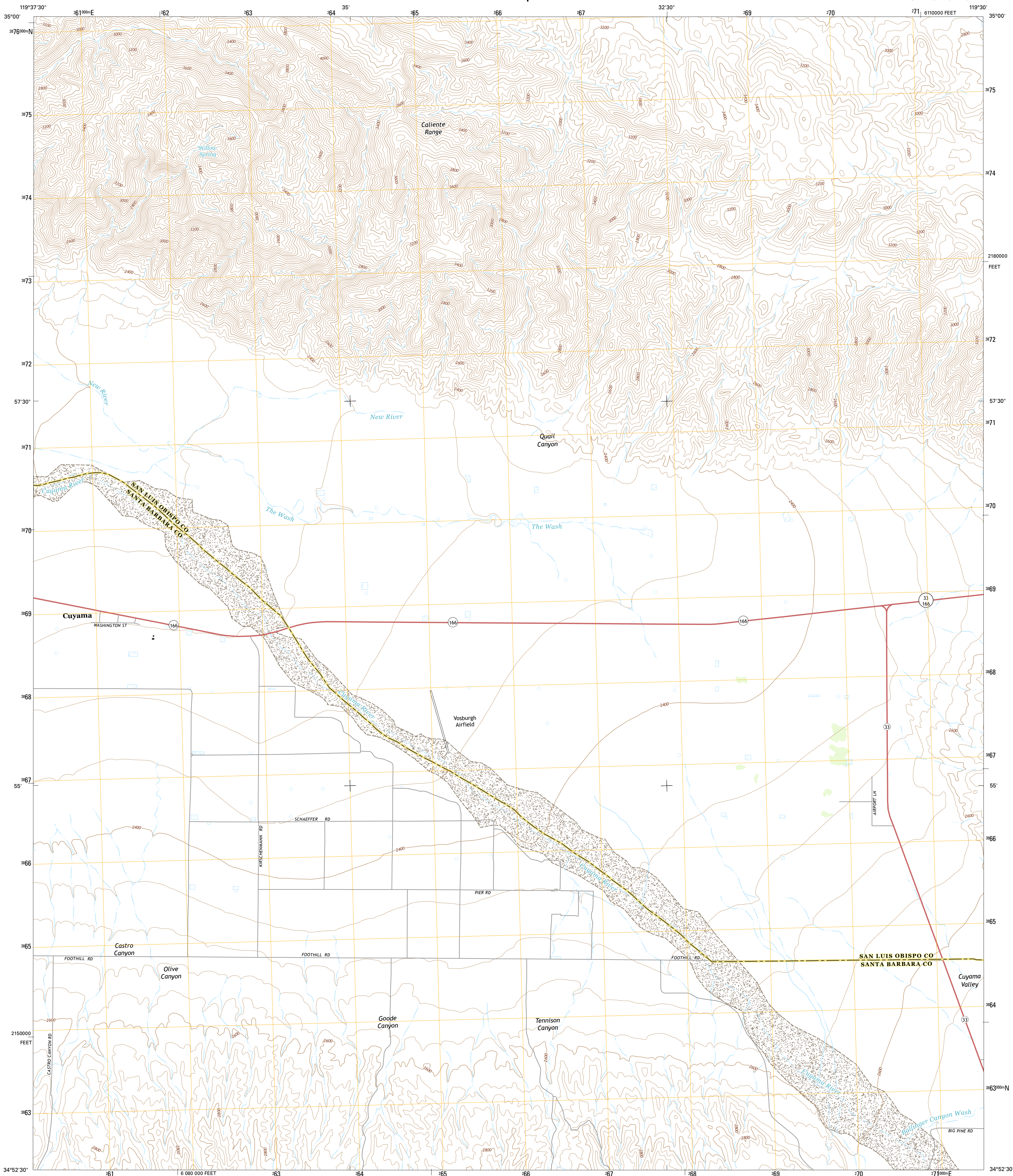




U.S. DEPARTMENT OF THE INTERIOR
U.S. GEOLOGICAL SURVEY

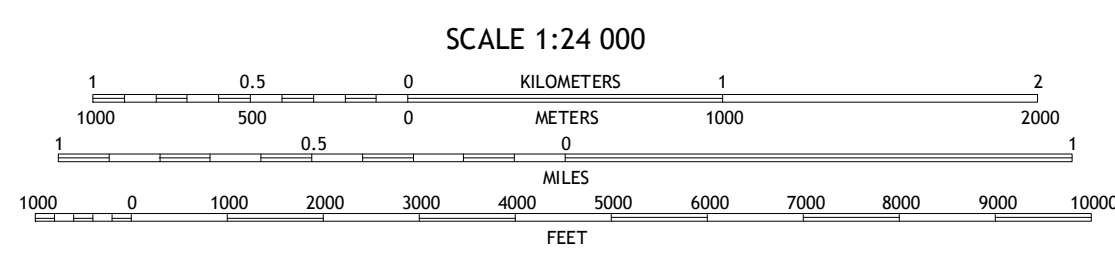
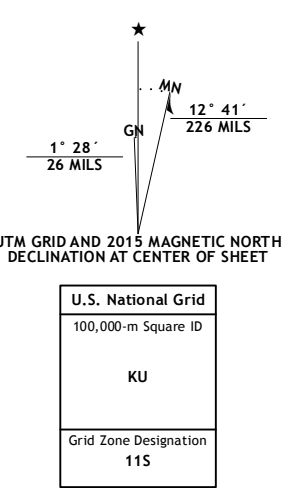


CUYAMA QUADRANGLE
CALIFORNIA
7.5-MINUTE SERIES



Produced by the United States Geological Survey
 North American Datum of 1983 (NAD83)
 World Geodetic System of 1984 (WGS84), Projection and
 1 000-meter grid: Universal Transverse Mercator, Zone 11S
 10 000-foot ticks: California Coordinate System of 1983 (zone 5)
 This map is not a legal document. Boundaries may be
 generalized for this map scale. Private lands within government
 reservations may not be shown. Obtain permission before
 entering private lands.

Imagery.....N.A.P., May 2012
 Roads.....HERE, ©2013 - 2014
 Names.....GNIS, 2015
 Hydrography.....National Hydrography Dataset, 2012
 Contours.....National Elevation Dataset, 2009
 Boundaries.....Multiple sources; see metadata file 1972 - 2015
 Public Land Survey System.....BLM, 2011



CONTOUR INTERVAL 40 FEET
 NORTH AMERICAN VERTICAL DATUM OF 1988
 This map was produced to conform with the
 National Geospatial Program US Topo Product Standard, 2011.
 A metadata file associated with this product is draft version 0.6.18



ROAD CLASSIFICATION

Expressway	Local Connector
Secondary Hwy	Local Road
Ramp	4WD
Interstate Route	US Route
	State Route

ADJOINING QUADRANGLES

1	2	3
4	5	
6	7	8

1 Wells Ranch
 2 Elkhorn Hills
 3 Maricopa
 4 New Cuyama
 5 Ballinger Canyon
 6 Salisbury Potrero
 7 Fox Mountain
 8 Cuyama Peak

CUYAMA, CA
2015

