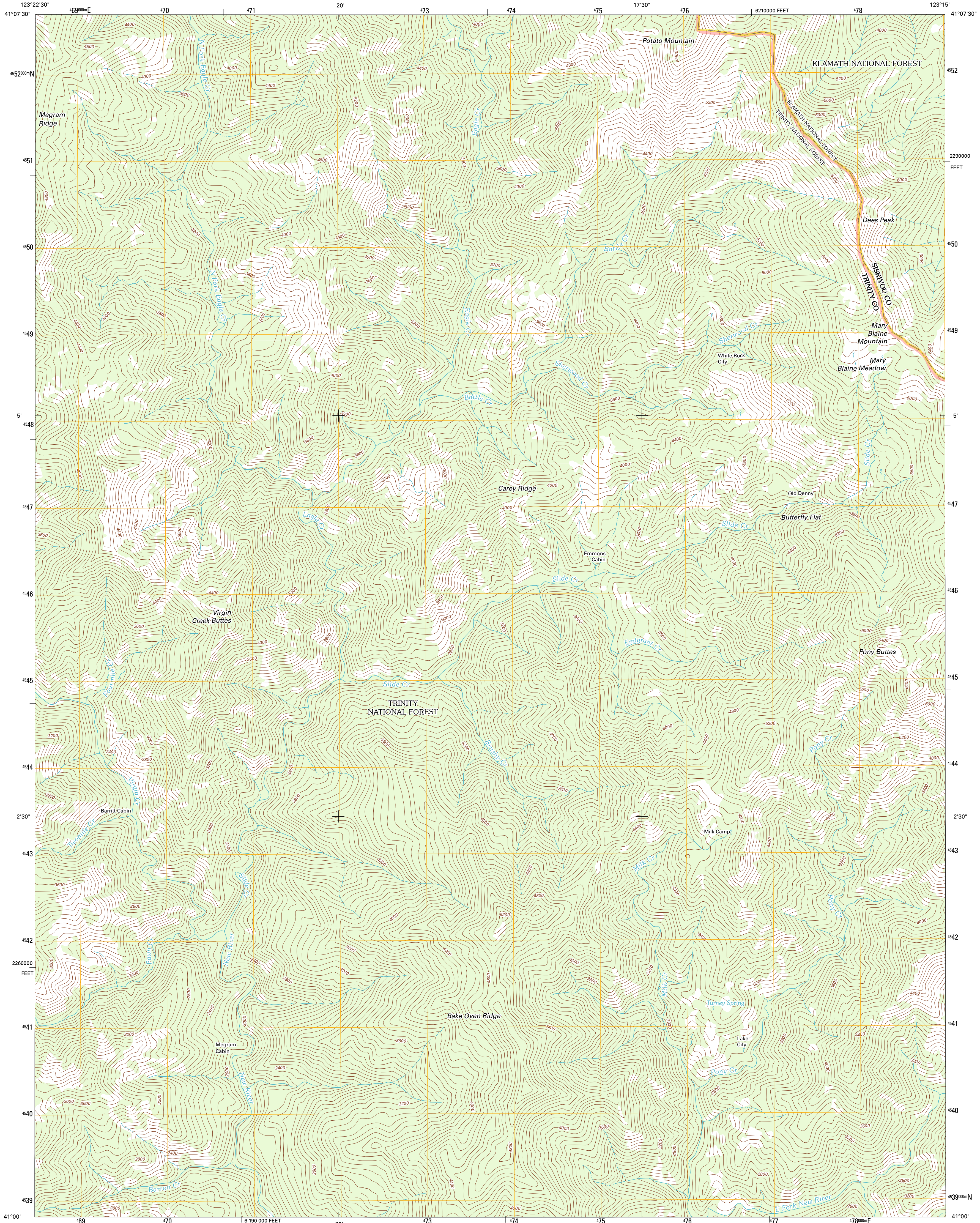




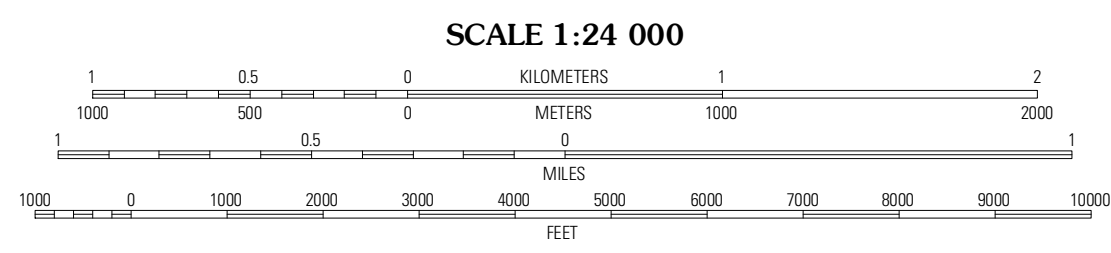
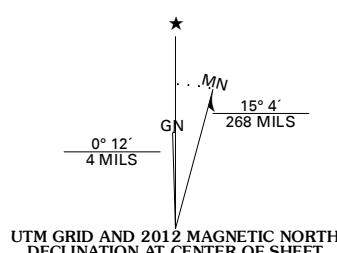
U.S. DEPARTMENT OF THE INTERIOR
U. S. GEOLOGICAL SURVEY



DEES PEAK QUADRANGLE
CALIFORNIA
7.5-MINUTE SERIES



Produced by the United States Geological Survey
North American Datum of 1983 (NAD83)
World Geodetic System of 1984 (WGS84). Projection and
1 000-meter grid: Universal Transverse Mercator, Zone 10T
10 000-foot ticks: California Coordinate System of 1983
(zone 1)



Salmon Mountain	Youngs Peak	Cecilville
Trinity Mountain	Dees Peak	Cecil Lake
Denny	Jim Jam Ridge	Tharston Peaks

ROAD CLASSIFICATION

Interstate Route (thick red line)
US Route (red line)
Ramp (red line with blue triangle)
FS Primary Route (blue line with white circle)
FS Passenger Route (blue line with white circle)
FS High Clearance Route (blue line with white circle)

State Route (grey line)
Local Road (grey line)
4WD (grey line with red dots)
State Route (grey line with red dots)

Check with local Forest Service unit for current travel conditions and restrictions.

Imagery.....NAIP, July 2010
Roads.....©2006-2011 TomTom
Roads within US Forest Service Lands.....FS Topo Data with limited Forest Service updates, 2009
Names.....GNIS, 2011
Hydrography.....National Hydrography Dataset, 2010
Contours.....National Elevation Dataset, 2001
Boundaries.....Census, IBWC, IBC, USGS, 1972 - 2010

CONTOUR INTERVAL 80 FEET
NORTH AMERICAN VERTICAL DATUM OF 1988

This map was produced to conform with the National Geospatial Program US Topo Product Standard, 2011. A metadata file associated with this product is draft version 0.6.1

DEES PEAK, CA
2012

ADJOINING 7.5 QUADRANGLES