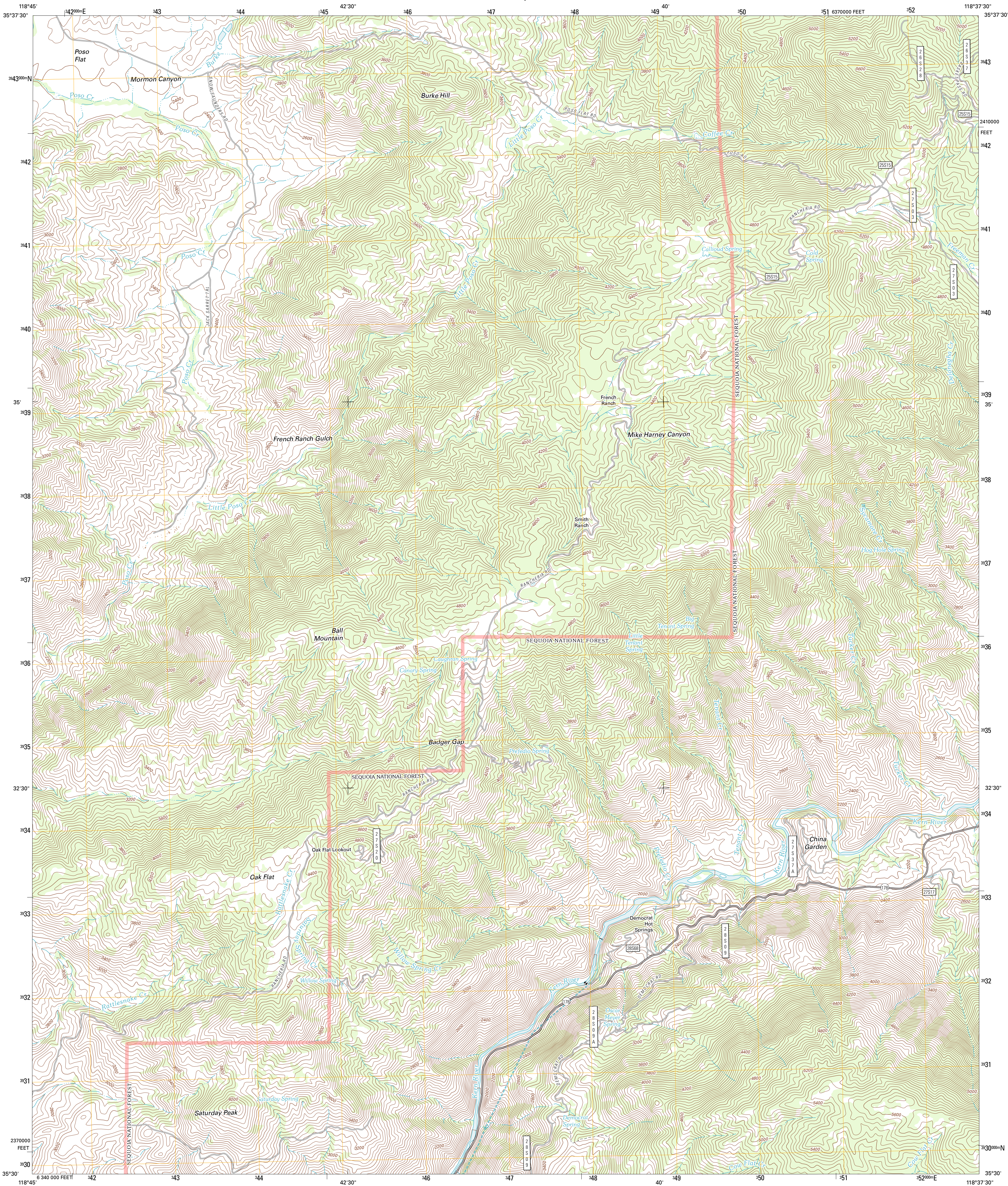




U.S. DEPARTMENT OF THE INTERIOR
U. S. GEOLOGICAL SURVEY



DEMOCRAT HOT SPRINGS QUADRANGLE
CALIFORNIA-KERN CO.
7.5-MINUTE SERIES



Produced by the United States Geological Survey
North American Datum of 1983 (NAD83)
World Geodetic System of 1984 (WGS84). Projection and
1 000-meter grid: Universal Transverse Mercator, Zone 11S
10 000-foot ticks: California Coordinate System of 1983
(zone 5)

Imagery.....NAIP, July 2010 - August 2010
Roads.....©2006-2011 TomTom
Roads within US Forest Service Lands.....FSTopo Data
with limited Forest Service updates, 2009
Names.....©2006-2011 GNS
Hydrography.....National Hydrography Dataset, 2010
Contours.....National Elevation Dataset, 2002
Boundaries.....Census, IBWC, IBC, USGS, 1972 - 2010

UTM GRID AND 2012 MAGNETIC NORTH
DECLINATION AT CENTER OF SHEET

U.S. National Grid
100 000-m Square ID
LV
Grid Zone Designation
11S

SCALE 1:24 000

1 000 0 0.5 1 KILOMETERS
1000 0 500 1000 METERS
1 0 1000 2000 3000 4000 5000 6000 7000 8000 9000 10000 FEET

CONTOUR INTERVAL 40 FEET
NORTH AMERICAN VERTICAL DATUM OF 1988

This map was produced to conform with the
National Geospatial Program US Topo Product Standard, 2011.
A metadata file associated with this product is draft version 0.6.1



QUADRANGLE LOCATION		
Woody	Glenville	Alta Sierra
Pine Mountain	Democrat Hot Springs	Miracle Hot Springs
Rio Bravo Ranch	Mount Adelaide	Breckenridge Mountain

ROAD CLASSIFICATION

Interstate Route
US Route
State Route
Local Road
4WD

Interstate Route
US Route
FS Passenger Route
FS High Clearance Route

Check with local Forest Service unit
for current travel conditions and restrictions.

DEMOCRAT HOT SPRINGS, CA
2012