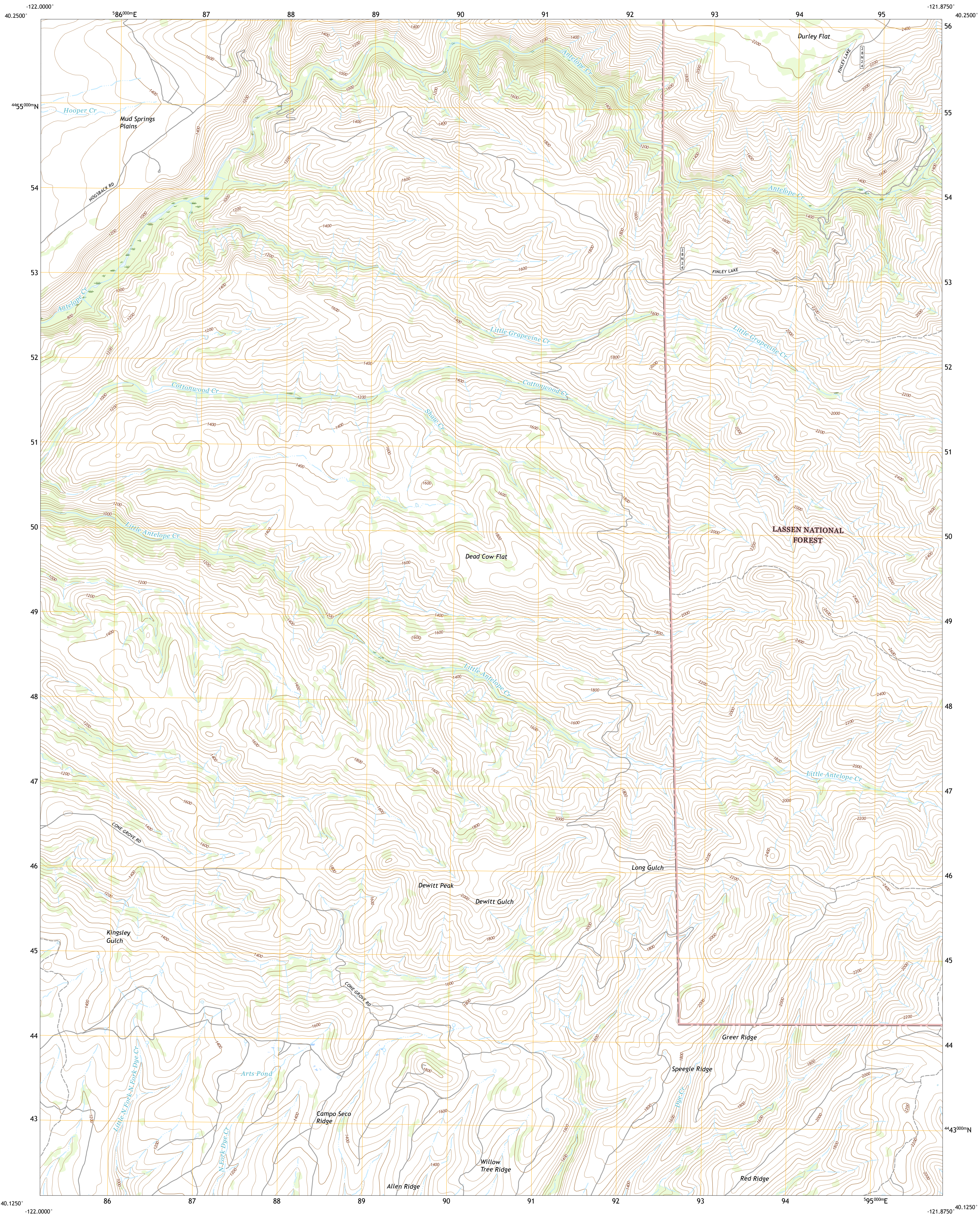




U.S. DEPARTMENT OF THE INTERIOR
U.S. GEOLOGICAL SURVEY

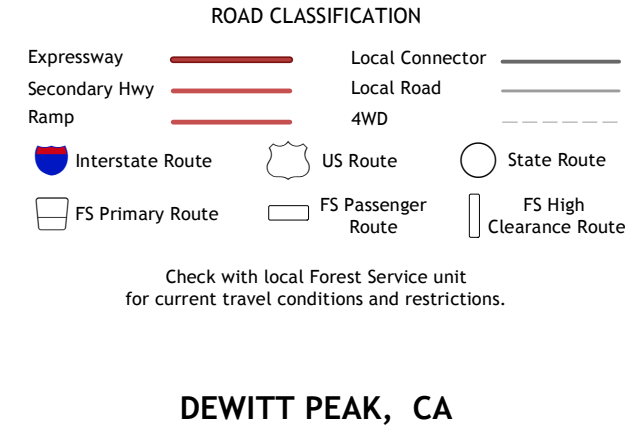
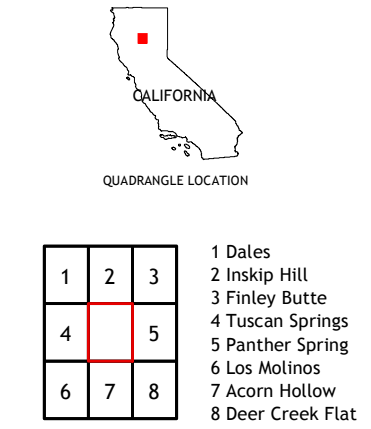
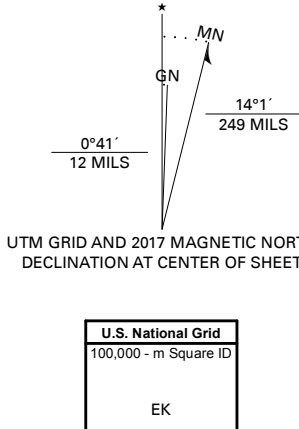


DEWITT PEAK QUADRANGLE
CALIFORNIA - TEHAMA COUNTY
7.5-MINUTE SERIES



Produced by the United States Geological Survey
North American Datum of 1983 (NAD83)
World Geodetic System of 1984 (WGS84). Projection and
1 000-meter grid: Universal Transverse Mercator, Zone 10T
This map is not a legal document. Boundaries may be
generalized for this map scale. Private lands within government
reservations may not be shown. Obtain permission before
entering private lands.

Imagery.....N.A.P., July 2016 - October 2016
Roads.....U.S. Census Bureau, 2016
Data within US Forest Service Lands.....FS Topo, 2018
with limited Forest Service updates, 2018
Names.....GNIS, 1981 - 1995
Hydrography.....National Hydrography Dataset, 2003 - 2014
Contours.....National Elevation Dataset, 1999
Boundaries.....Multiple sources: see metadata file 2016 - 2017
Public Land Survey System.....BLM, 2018
Wetlands.....FWS National Wetlands Inventory 1972 - 1981



DEWITT PEAK, CA
2018

