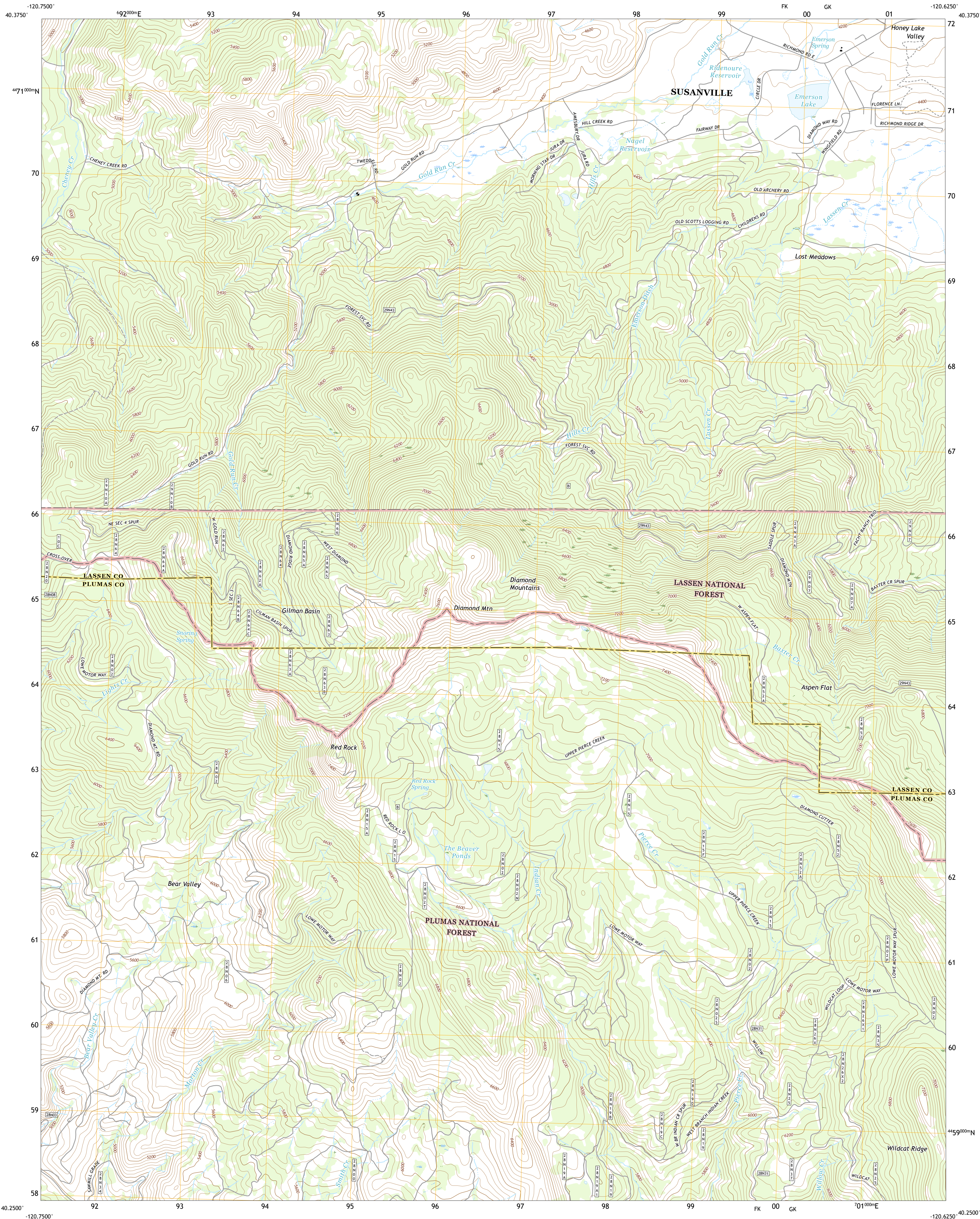




U.S. DEPARTMENT OF THE INTERIOR
U.S. GEOLOGICAL SURVEY

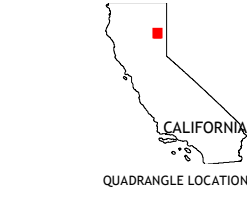
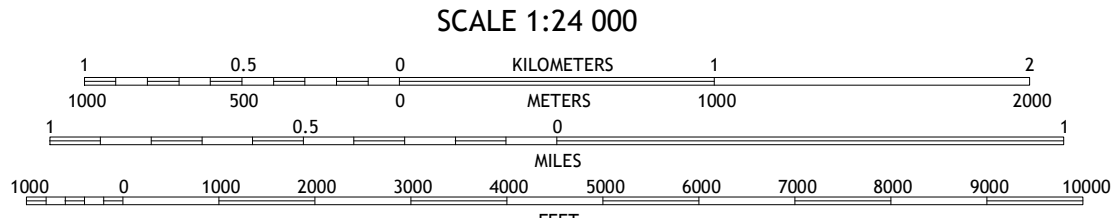
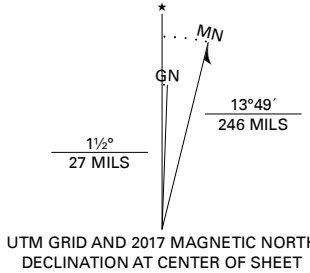


DIAMOND MOUNTAIN QUADRANGLE
CALIFORNIA
7.5-MINUTE SERIES



Produced by the United States Geological Survey
North American Datum of 1983 (NAD83)
World Geodetic System of 1984 (WGS84). Projection and
1 000-meter grid: Universal Transverse Mercator, Zone 10T
This map is not a legal document. Boundaries may be
generalized for this map scale. Private lands within government
reservations may not be shown. Obtain permission before
entering private lands.

Imagery.....N.A.P., July 2016 - October 2016
Roads.....U.S. Census Bureau, 2016
Data within US Forest Service Lands.....FSTopo
with limited Forest Service updates, 2018
Names.....GNS, 1981
Hydrography.....National Hydrography Dataset, 2002
Contours.....National Elevation Dataset, 1999
Boundaries.....Multiple sources: see metadata file, 2016
Public Land Survey System.....BLM, 2018
Wetlands.....FWS National Wetlands Inventory, 1981



1	2	3	1 Roop Mountain
4		5	2 Susanville
6	7	8	3 Johnstownville
			4 Fredonyer Pass
			5 Janesville
			6 Moonlight Peak
			7 Kettle Rock
			8 Antelope Lake

ROAD CLASSIFICATION	
Expressway	Local Connector
Secondary Hwy	Local Road
Ramp	4WD
Interstate Route	US Route
FS Primary Route	State Route
FS Passenger Route	FS High Clearance Route

Check with local Forest Service unit
for current travel conditions and restrictions.

DIAMOND MOUNTAIN, CA
2018

