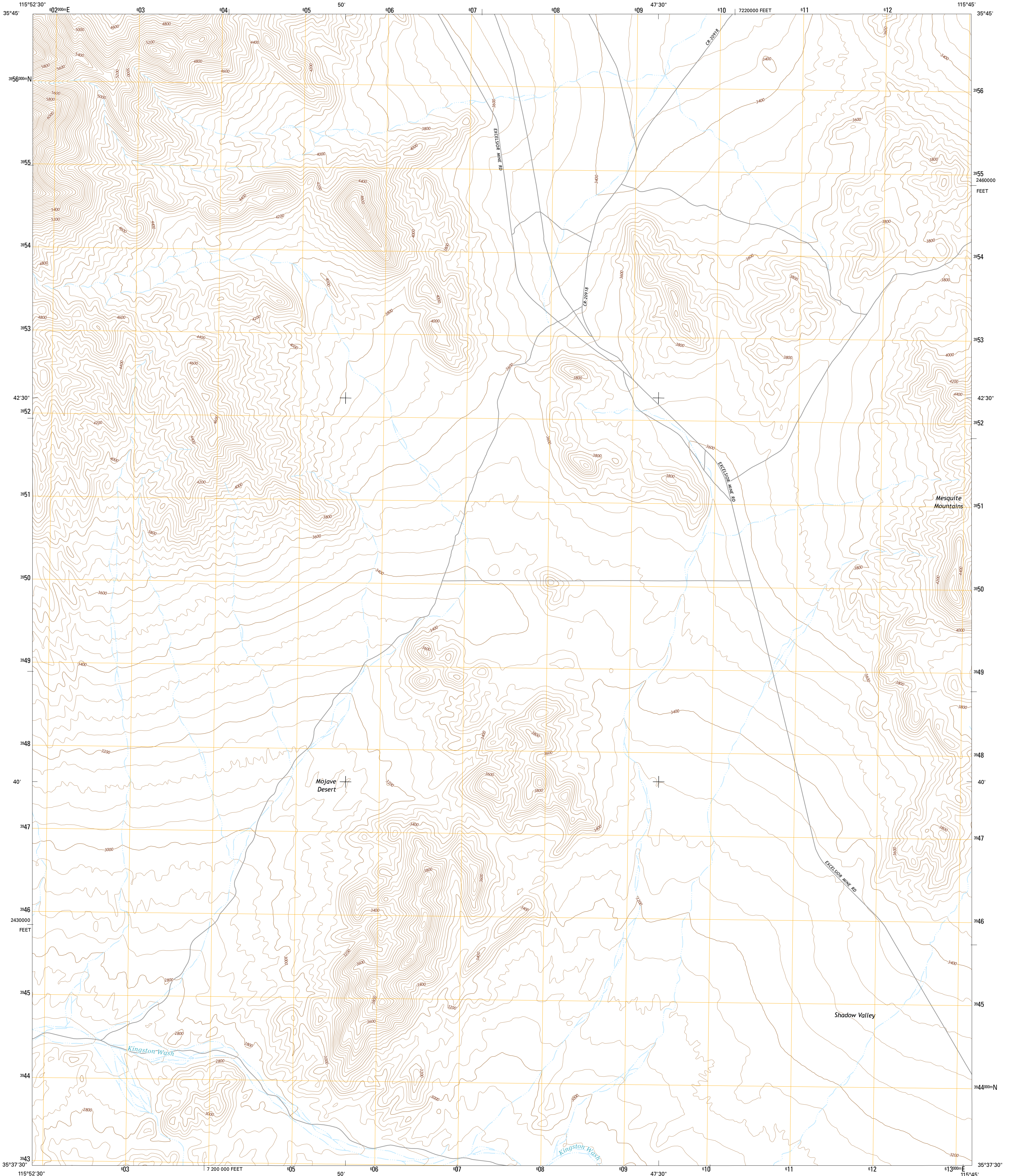




U.S. DEPARTMENT OF THE INTERIOR  
U.S. GEOLOGICAL SURVEY

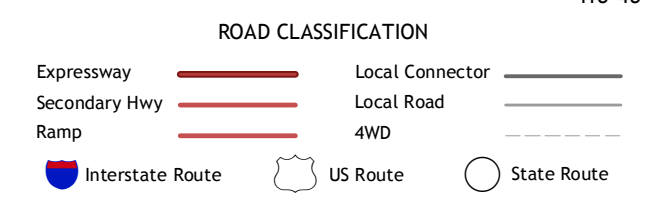
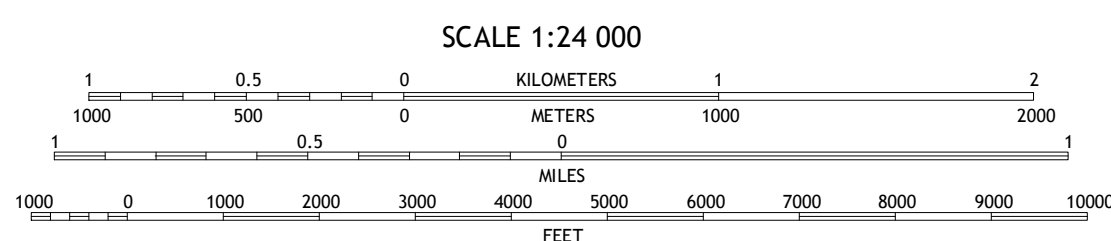
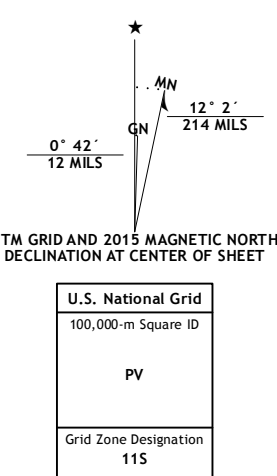


EAST OF KINGSTON PEAK QUADRANGLE  
CALIFORNIA-SAN BERNARDINO CO.  
7.5-MINUTE SERIES



**Produced by the United States Geological Survey**  
 North American Datum of 1983 (NAD83)  
 World Geodetic System of 1984 (WGS84). Projection and  
 1000-foot ticks: California Coordinate System of 1983 (zone 5)  
 This map is not a legal document. Boundaries may be  
 generalized for this map scale. Private lands within government  
 reservations may not be shown. Obtain permission before  
 entering private lands.

Imagery.....NAIP, April 2012  
 Roads.....HERE, ©2013 - 2014  
 Names.....GNIS, 2015  
 Hydrography.....National Hydrography Dataset, 2012  
 Contours.....National Elevation Dataset, 2006  
 Boundaries.....Multiple sources; see metadata file 1972 - 2015  
 Public Land Survey System.....BLM, 2011



ADJOINING QUADRANGLES

1	2	3
4	5	6
7	8	

1 Horse Thief Springs  
 2 Blackwater Mine  
 3 West of Shendoah Peak  
 4 Kingston Peak  
 5 Mesquite Mountains  
 6 Kingston Spring  
 7 East of Kingston Spring  
 8 Pchalka Spring

EAST OF KINGSTON PEAK, CA  
2015

