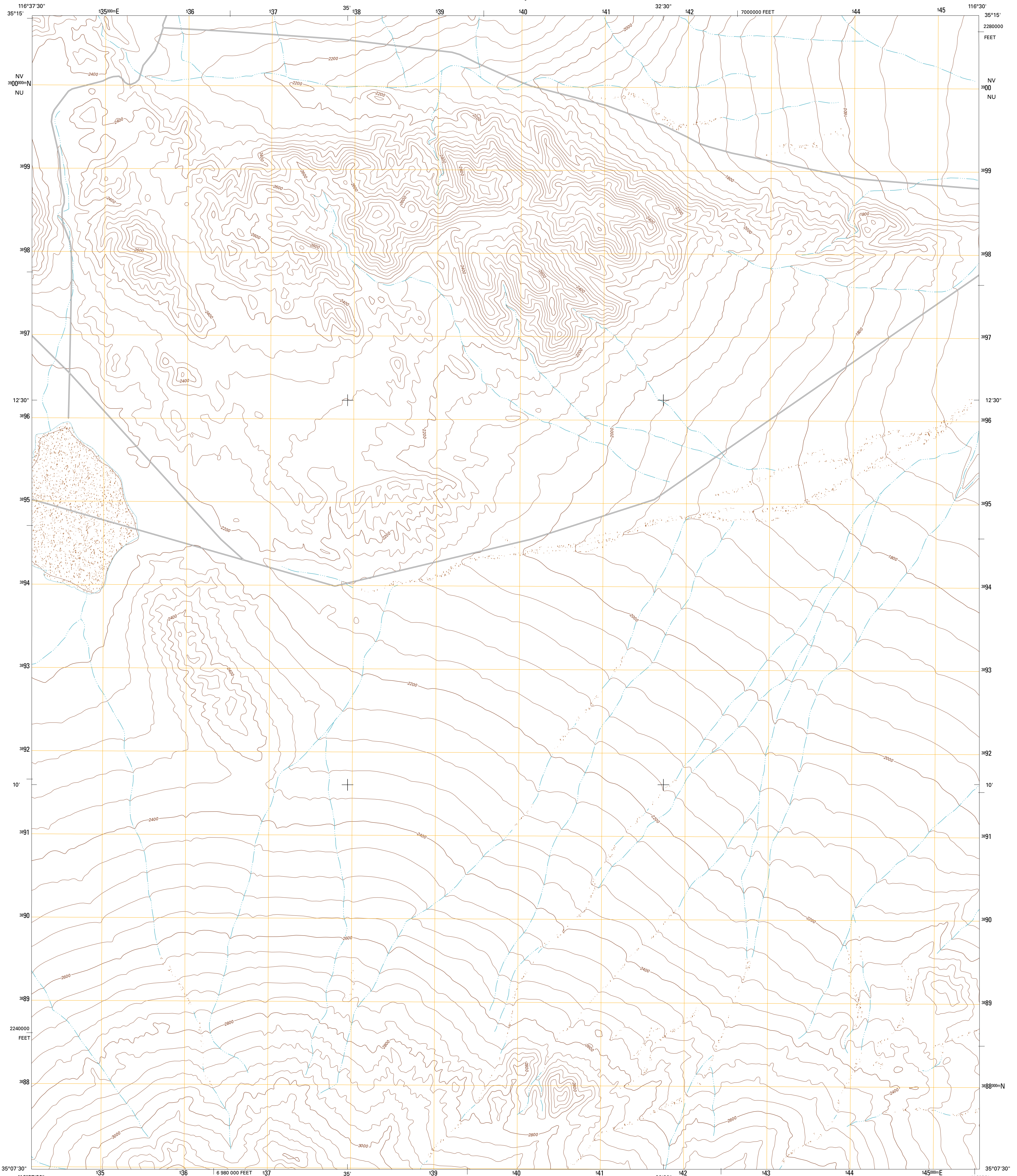




U.S. DEPARTMENT OF THE INTERIOR  
U. S. GEOLOGICAL SURVEY

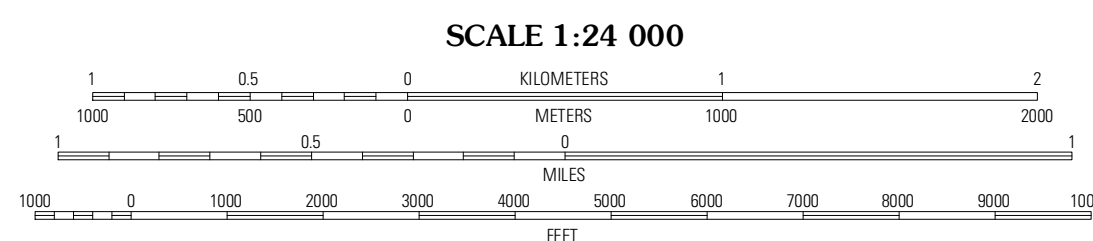
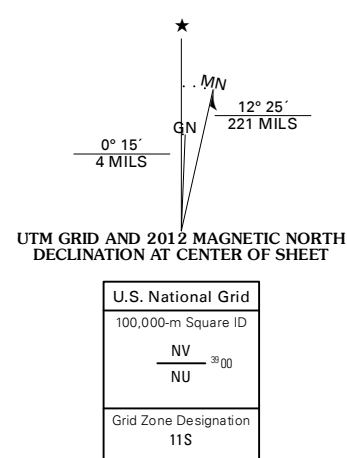


EAST OF LANGFORD WELL QUADRANGLE  
CALIFORNIA-SAN BERNARDINO CO.  
7.5-MINUTE SERIES



Produced by the United States Geological Survey  
North American Datum of 1983 (NAD83)  
World Geodetic System of 1984 (WGS84). Projection and  
1 000-meter grid: Universal Transverse Mercator, Zone 11S  
10 000-foot ticks: California Coordinate System of 1983  
(zone 5)

Imagery.....NAIP, May 2010 - June 2010  
Roads.....©2006-2011 TomTom  
Names.....GNIS, 2011  
Hydrography.....National Hydrography Dataset, 2010  
Contours.....National Elevation Dataset, 2005  
Boundaries.....Census, IBWC, IBC, USGS, 1972 - 2010



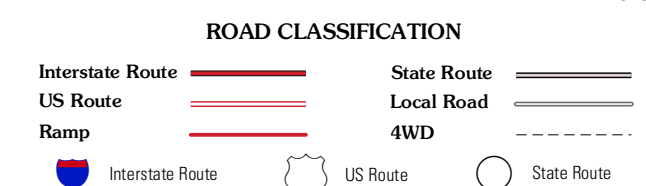
SCALE 1:24 000  
CONTOUR INTERVAL 40 FEET  
NORTH AMERICAN VERTICAL DATUM OF 1988  
This map was produced to conform with the  
National Geospatial Program US Topo Product Standard, 2011.  
A metadata file associated with this product is draft version 0.6.1



QUADRANGLE LOCATION

Fort Irwin	Tierfort Mountains	West of Red Pass Lake
Langford Well	East of Langford Well	Bitter Spring
Alford Mountain West	Alford Mountain East	Dunn

ADJOINING 7.5 QUADRANGLES



EAST OF LANGFORD WELL, CA  
2012