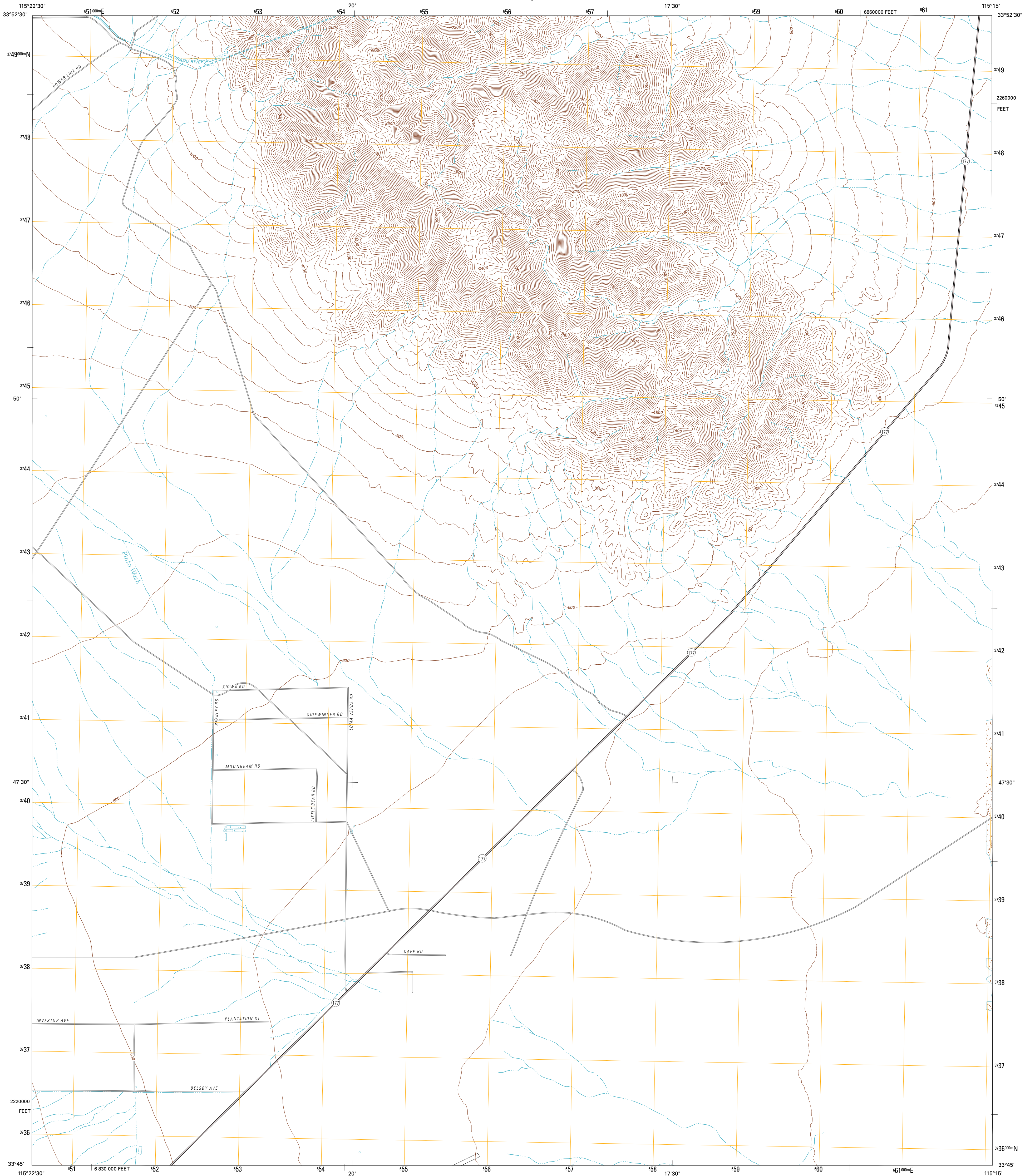




U.S. DEPARTMENT OF THE INTERIOR  
U. S. GEOLOGICAL SURVEY

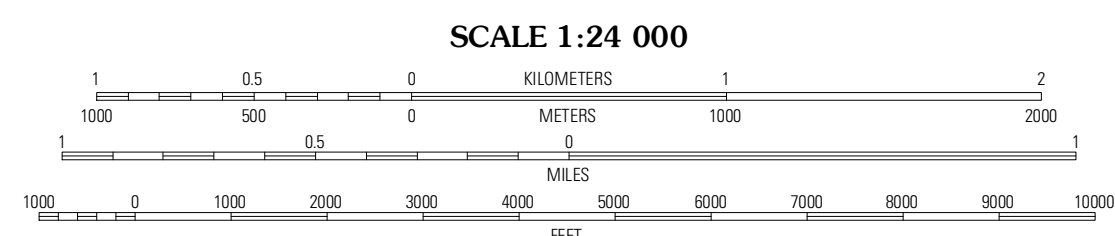
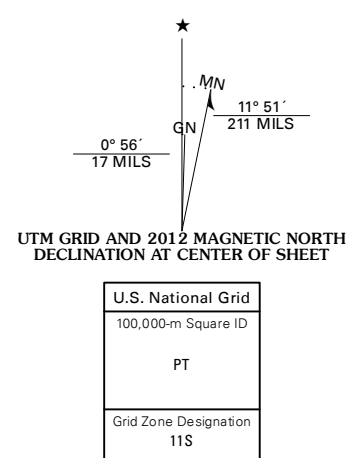


EAST OF VICTORY PASS QUADRANGLE  
CALIFORNIA-RIVERSIDE CO.  
7.5-MINUTE SERIES



Produced by the United States Geological Survey  
North American Datum of 1983 (NAD83)  
World Geodetic System of 1984 (WGS84). Projection and  
1 000-meter grid: Universal Transverse Mercator, Zone 11S  
10 000-foot ticks: California Coordinate System of 1983  
(zone 6)

Imagery: N.A.P., May 2010  
Roads: ©2006-2011 TomTom  
Names: GNSI, 2011  
Hydrography: National Hydrography Dataset, 2010  
Contours: National Elevation Dataset, 2006  
Boundaries: Census, IBWC, IBC, USGS, 1972-2010

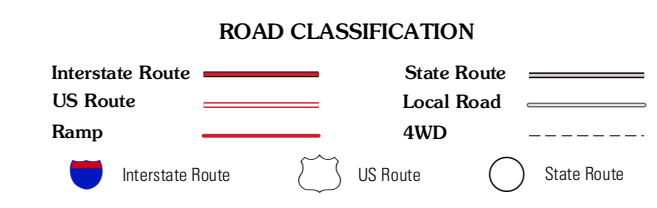


CONTOUR INTERVAL 40 FEET  
NORTH AMERICAN VERTICAL DATUM OF 1988  
This map was produced to conform with the  
National Geospatial Program US Topo Product Standard, 2011.  
A metadata file associated with this product is draft version 0.6.1



QUADRANGLE LOCATION

Pinto Wells	Coxcomb Mountains	West of Palen Pass
Victory Pass	East of Victory Pass	Palen Lake
Desert Center	Com Spring	Sidewinder Well



EAST OF VICTORY PASS, CA  
2012