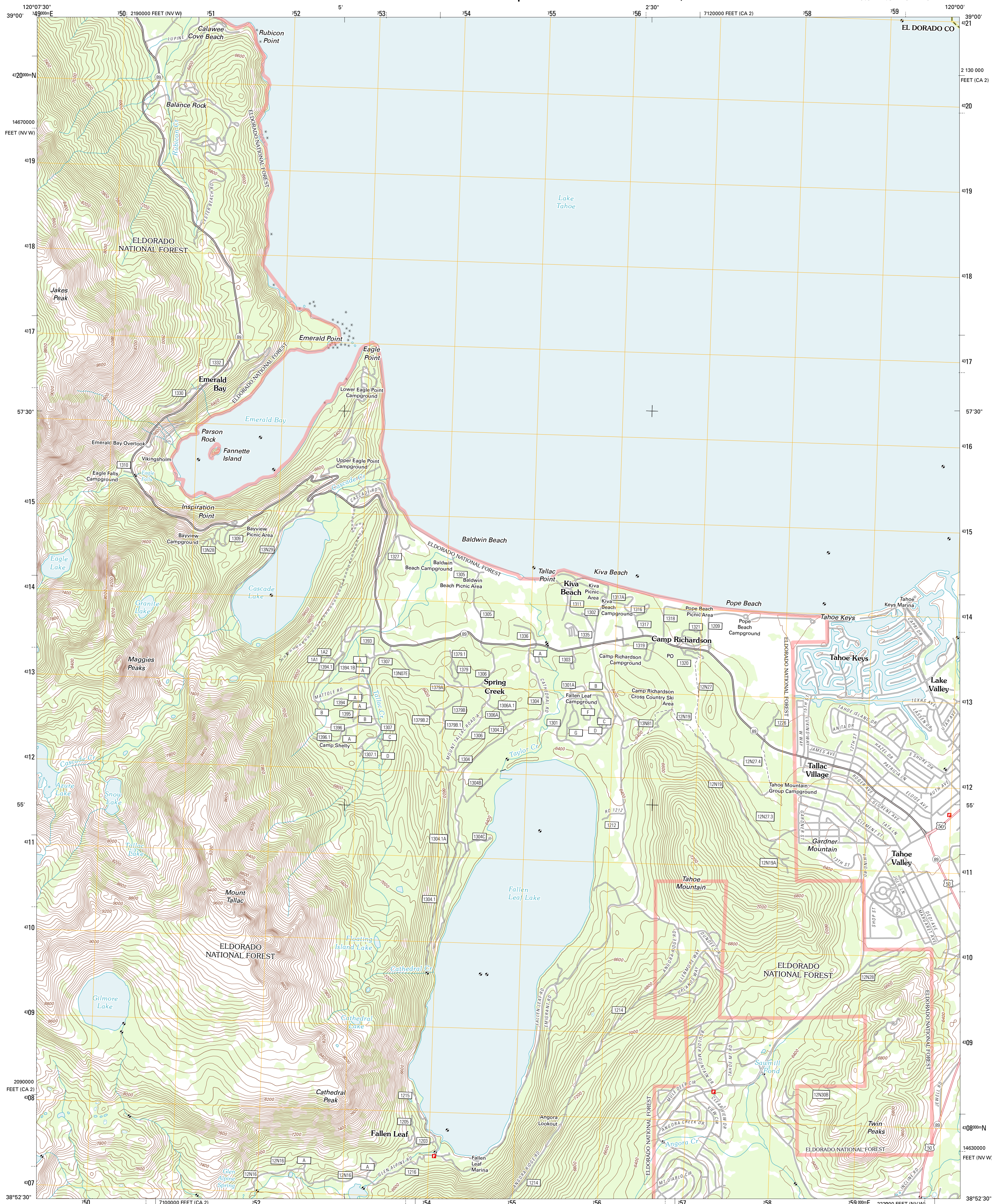




U.S. DEPARTMENT OF THE INTERIOR
U. S. GEOLOGICAL SURVEY

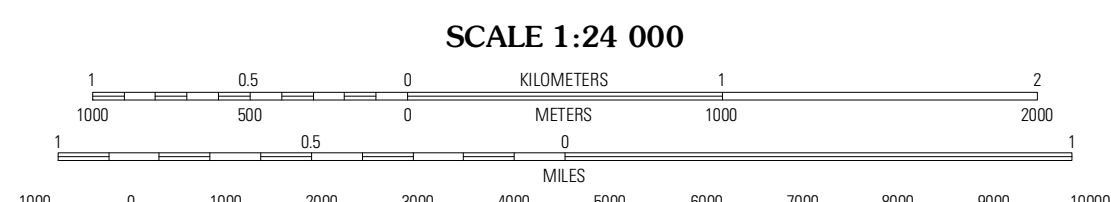
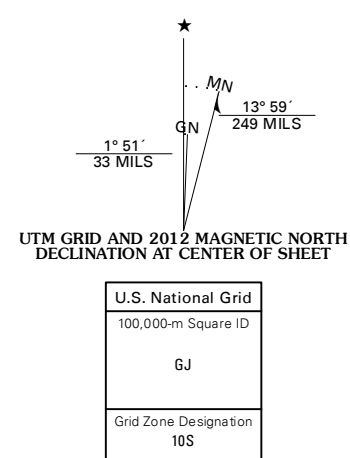


EMERALD BAY QUADRANGLE
CALIFORNIA-NEVADA
7.5-MINUTE SERIES



Produced by the United States Geological Survey
North American Datum of 1983 (NAD83)
World Geodetic System of 1984 (WGS84). Projection and
1 000-meter grid: Universal Transverse Mercator, Zone 10S
10 000-foot ticks: California Coordinate System of 1983
(zone 2), Nevada Coordinate System of 1983 (west zone)

Imagery: N.A.P., July 2010
Roads: ©2006-2011 TomTom
Roads within US Forest Service Lands: FS Topo Data
with limited Forest Service updates, 2009
Names: GNIS, 2011
Hydrography: National Hydrography Dataset, 2010
Contours: National Elevation Dataset, 1999
Boundaries: Census, IBWC, IBC, USGS, 1972 - 2010



CONTOUR INTERVAL 40 FEET
NORTH AMERICAN VERTICAL DATUM OF 1988

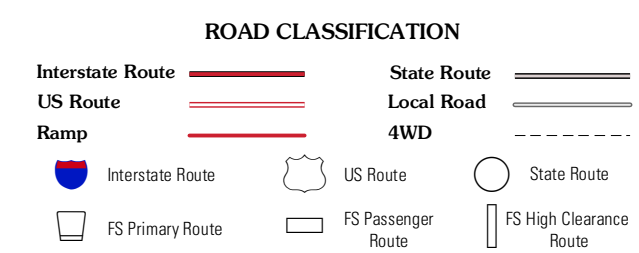
This map was produced to conform with the
National Geospatial Program US Topo Product Standard, 2011.
A metadata file associated with this product is draft version 0.6.1



QUADRANGLE LOCATION

Homewood	Meeks Bay	Glenbrook
Rockbound Valley	Emerald Bay	South Lake Tahoe
Pyramid Peak	Echo Lake	Free Peak

ADJOINING 7.5 QUADRANGLES



Check with local Forest Service unit
for current travel conditions and restrictions.

EMERALD BAY, CA-NV
2012