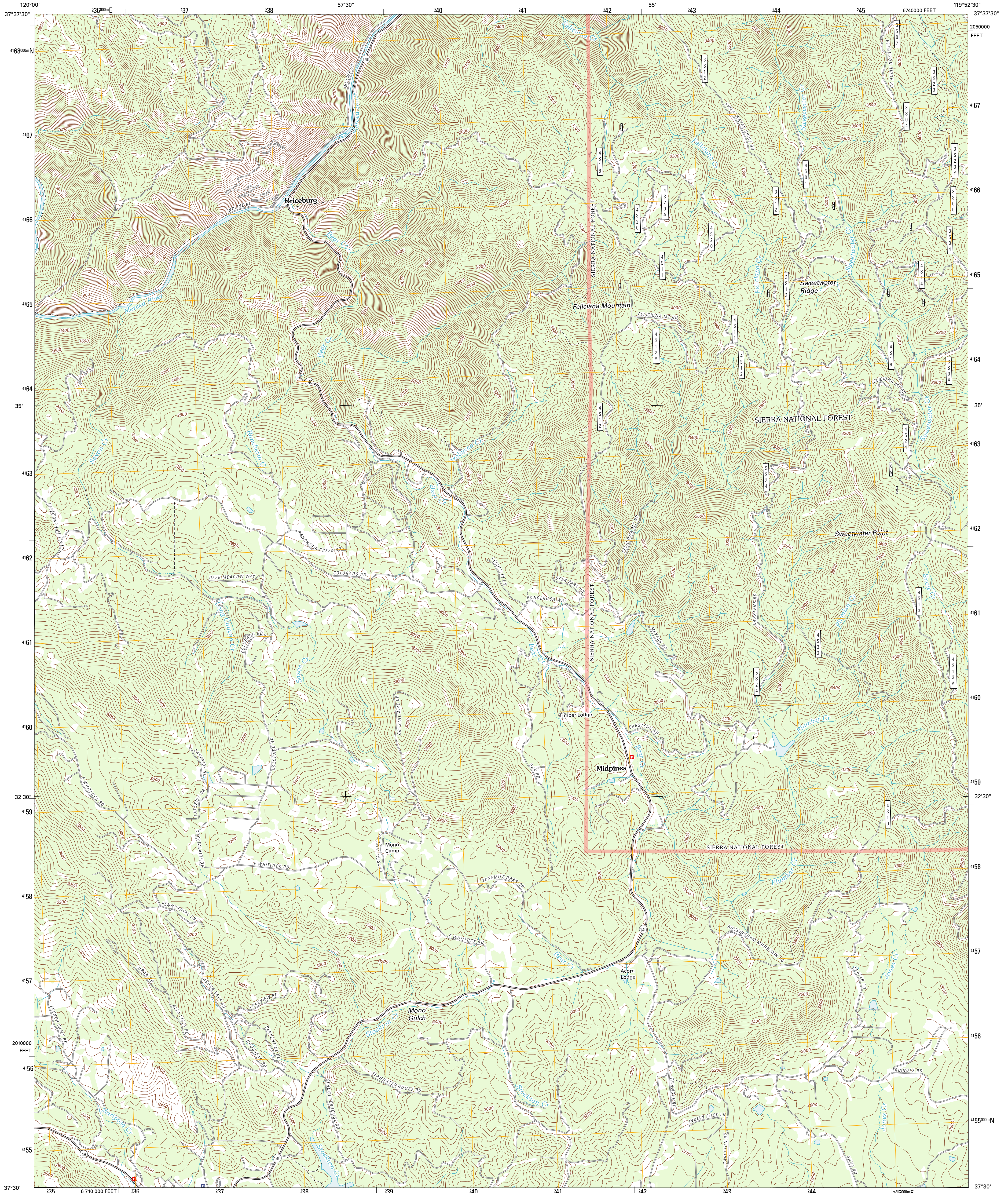




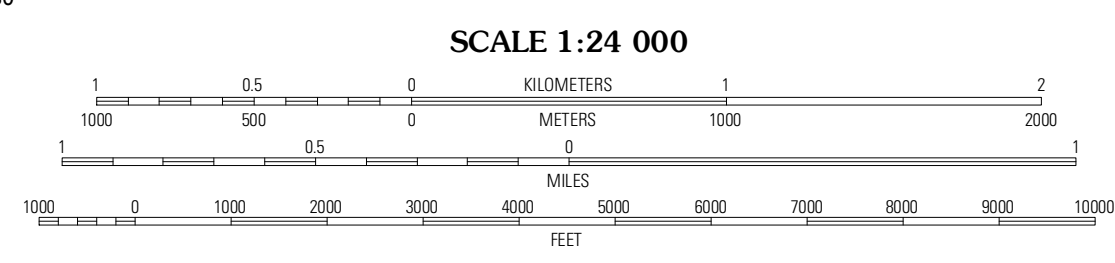
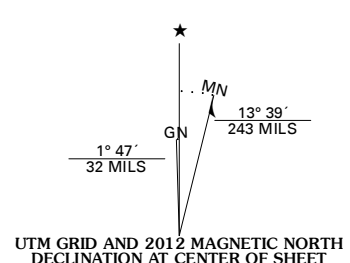
U.S. DEPARTMENT OF THE INTERIOR
U. S. GEOLOGICAL SURVEY



FELICIANA MOUNTAIN QUADRANGLE
CALIFORNIA-MARIPOSA CO.
7.5-MINUTE SERIES



Produced by the United States Geological Survey
North American Datum of 1983 (NAD83)
World Geodetic System of 1984 (WGS84). Projection and
1 000-meter grid: Universal Transverse Mercator, Zone 11S
10 000-foot ticks: California Coordinate System of 1983
(zone 3)



CONTOUR INTERVAL 40 FEET
NORTH AMERICAN VERTICAL DATUM OF 1988
This map was produced to conform with the
National Geospatial Program US Topo Product Standard, 2011.
A metadata file associated with this product is draft version 0.6.1



QUADRANGLE LOCATION

Buckhorn Peak	Rinsley	EI Portal
Bear Valley	Feliciano Mountain	Buckingham Mountain
Cathays Valley	Mariposa	Stumpfield Mountain

ADJOINING 7.5' QUADRANGLES

ROAD CLASSIFICATION

	Interstate Route		State Route
	US Route		Local Road
	Ramp		4WD
	FS Primary Route		US Route
	FS Passenger Route		State Route
	FS High Clearance Route		

Check with local Forest Service unit for current travel conditions and restrictions.

FELICIANA MOUNTAIN, CA
2012

Imagery.....NAP, July 2010
Roads.....©2006-2011 TomTom
Roads within US Forest Service Lands.....FS Topo Data
with limited Forest Service updates, 2009
Names.....GNIS, 2011
Hydrography.....National Hydrography Dataset, 2010
Contours.....National Elevation Dataset, 2001
Boundaries.....Census, IBWC, IBC, USGS, 1972-2010

U.S. National Grid
100,000m Square ID

KB
Grid Zone Designation 11S