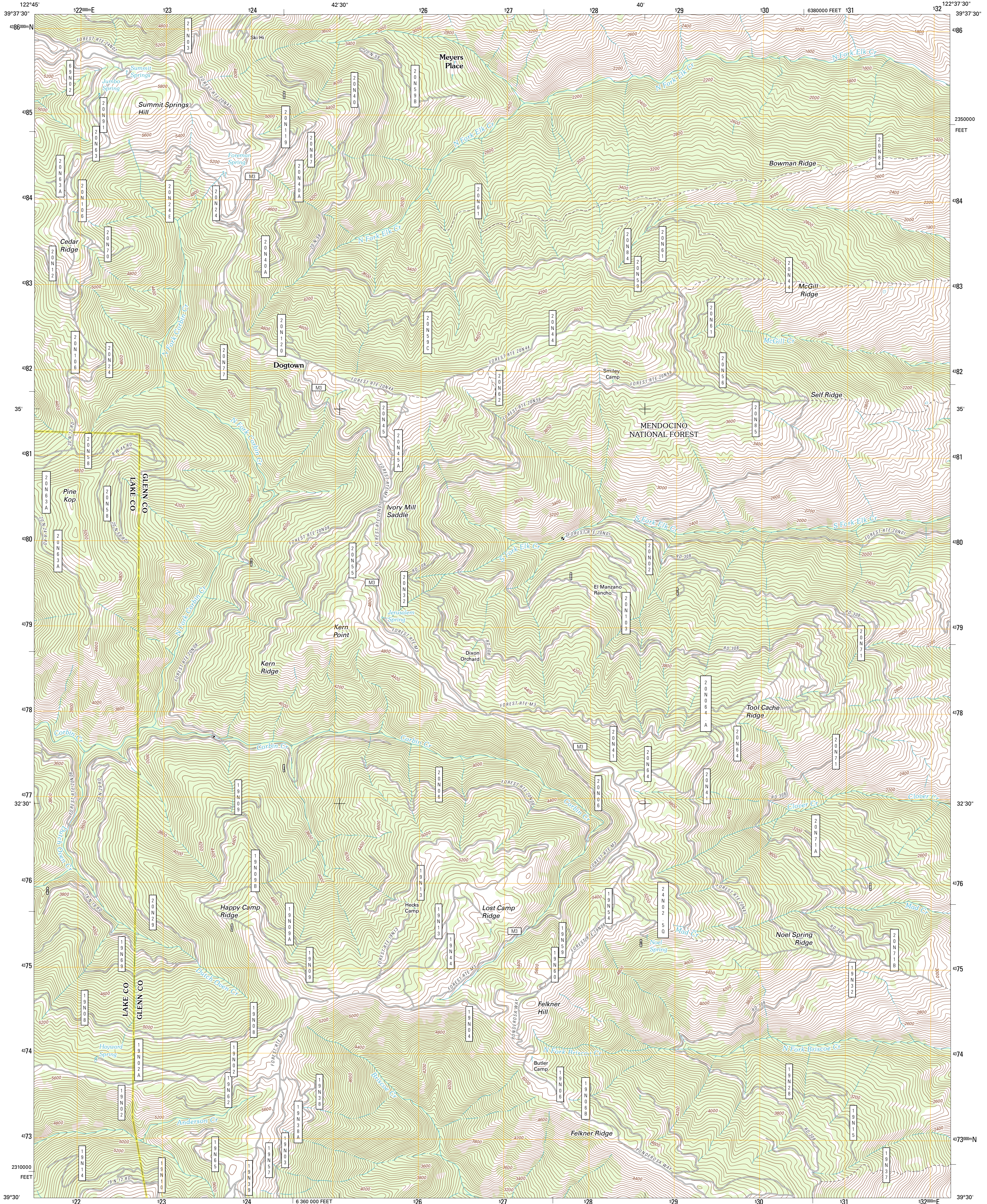




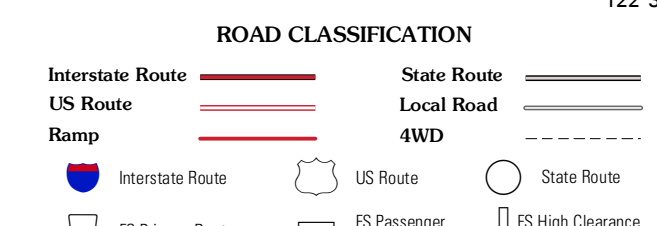
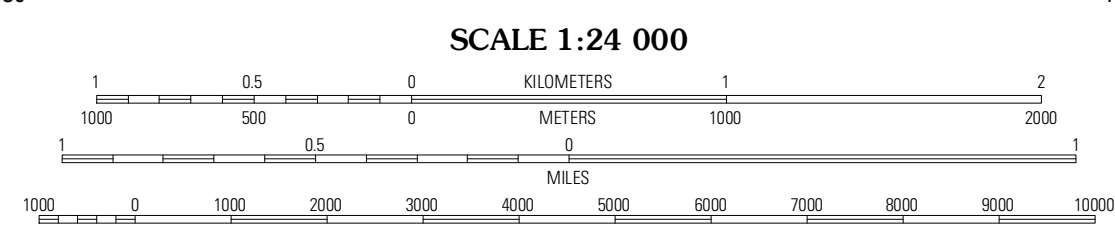
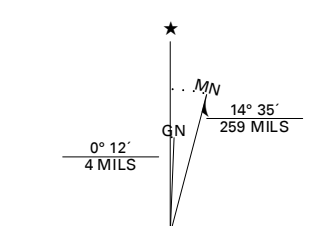
U.S. DEPARTMENT OF THE INTERIOR
U. S. GEOLOGICAL SURVEY



FELKNER HILL QUADRANGLE
CALIFORNIA
7.5-MINUTE SERIES



Produced by the United States Geological Survey
North American Datum of 1983 (NAD83)
World Geodetic System of 1984 (WGS84) Projection and
1,000-meter grid. Universal Transverse Mercator, Zone 10S
10,000-foot ticks: California Coordinate System of 1983
(zone 2)



Imagery: NAIP, July 2010 - August 2010
Roads: ©2006-2011 TomTom
Roads within US Forest Service Lands with limited Forest Service updates, 2009
Names: GNSIS, 2011
Hydrography: National Hydrography Dataset, 2010
Contours: National Elevation Dataset, 2001
Boundaries: Census, IBWC, IBC, USGS, 1972 - 2010

U.S. National Grid
100,000m Square ID
EJ
Grid Zone Designation
10S

CONTOUR INTERVAL 40 FEET
NORTH AMERICAN VERTICAL DATUM OF 1988

This map was produced to conform with the
National Geospatial Program US Topo Product Standard, 2011.
A metadata file associated with this product is draft version 0.6.1

Plaskett Meadows	Alder Springs	Chrome
Kneecap Ridge	Felkner Hill	Elk Creek
Crocket Peak	Saint John Mountain	Stonyford

Check with local Forest Service unit
for current travel conditions and restrictions.

FELKNER HILL, CA
2012

ADJOINING 7.5 QUADRANGLES