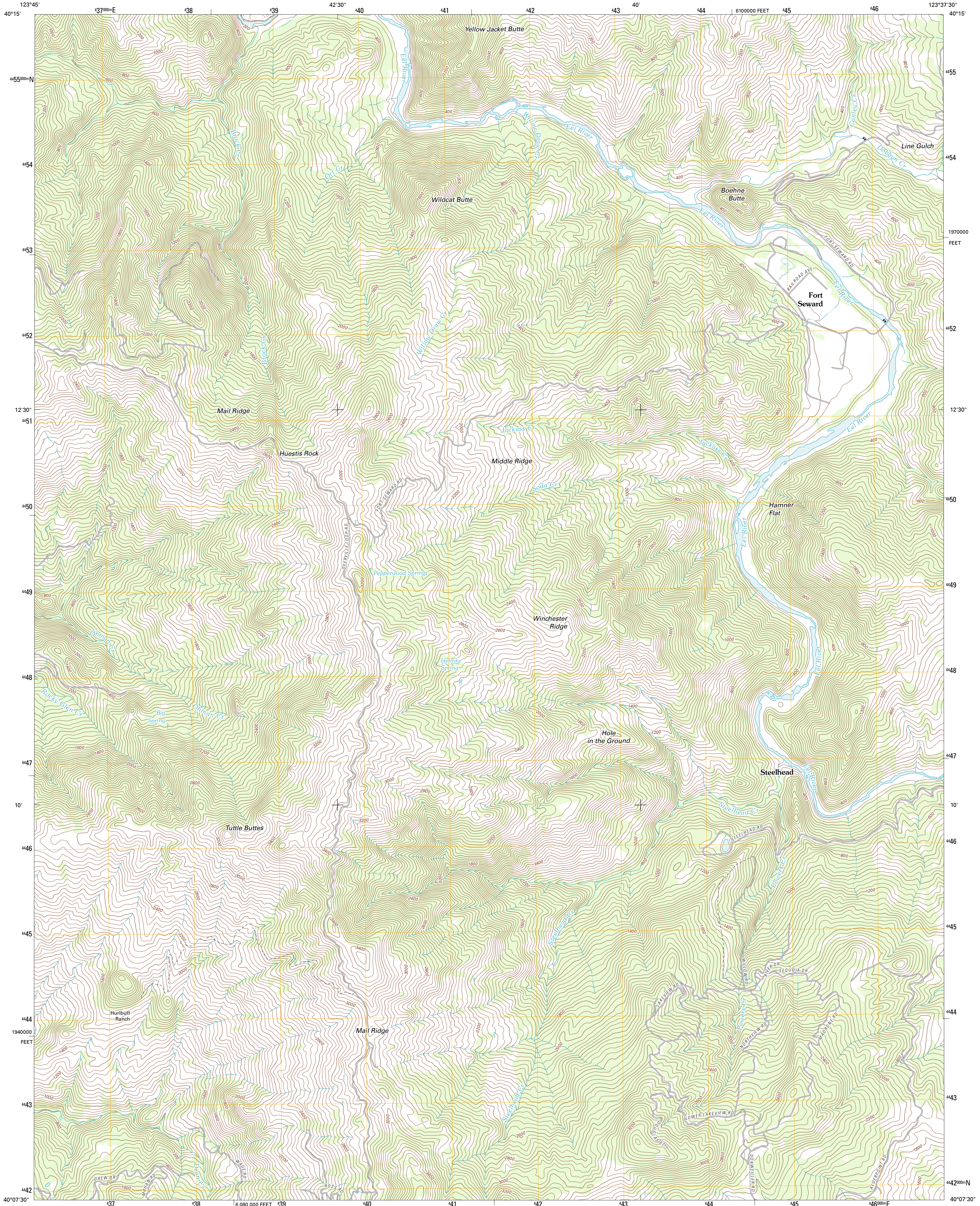




U.S. DEPARTMENT OF THE INTERIOR
U. S. GEOLOGICAL SURVEY

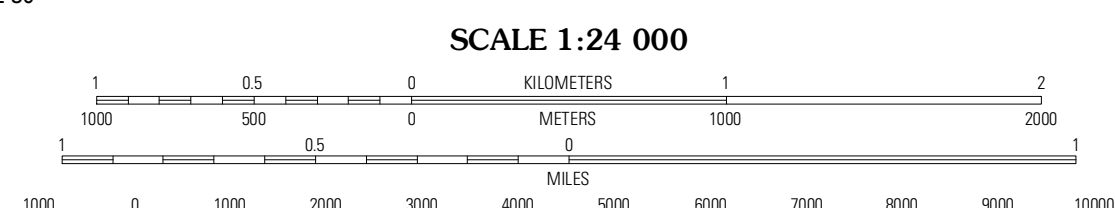
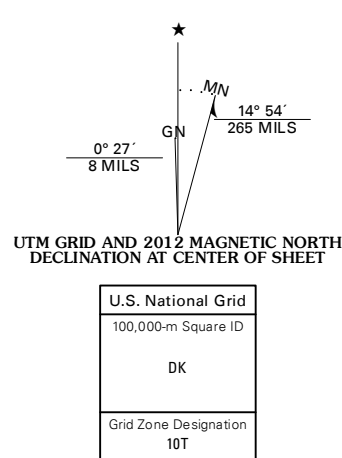


FORT SEWARD QUADRANGLE
CALIFORNIA-HUMBOLDT CO.
7.5-MINUTE SERIES



Produced by the United States Geological Survey
North American Datum of 1983 (NAD83)
World Geodetic System of 1984 (WGS84), Projection and
1 000-meter grid; Universal Transverse Mercator, Zone 10T
10 000-foot ticks; California Coordinate System of 1983
(zone 1)

Imagery.....N.A.I.P., June 2010
Roads.....©2006-2011 TomTom
Names.....©2011
Hydrography.....National Hydrography Dataset, 2010
Contours.....National Elevation Dataset, 1999
Boundaries.....Census, IBWC, IBC, USGS, 1972 - 2010



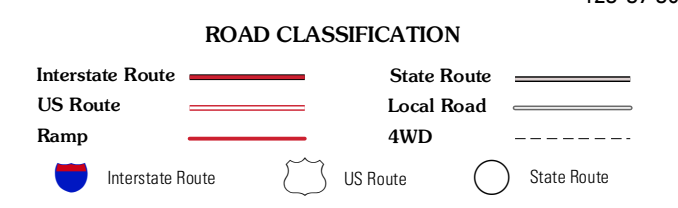
CONTOUR INTERVAL 40 FEET
NORTH AMERICAN VERTICAL DATUM OF 1988

This map was produced to conform with the
National Geospatial Program US Topo Product Standard, 2011.
A metadata file associated with this product is draft version 0.6.1



Myers Flat	Blocksburg	Black Lassic
Miranda	Fort Seward	Alberpoint
Garberville	Harris	Jewett Rock

ADJOINING 7.5' QUADRANGLES



FORT SEWARD, CA
2012