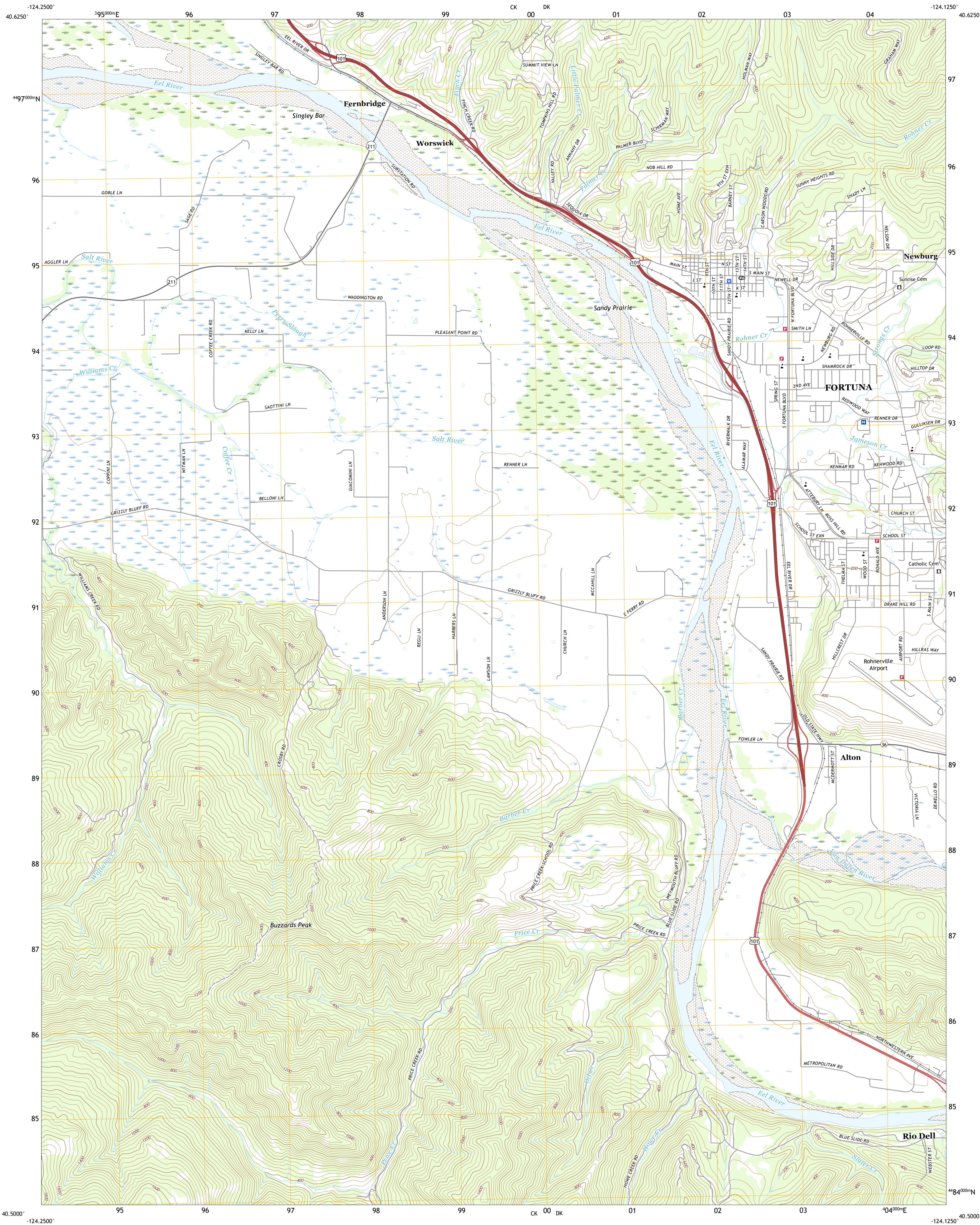




U.S. DEPARTMENT OF THE INTERIOR
U.S. GEOLOGICAL SURVEY

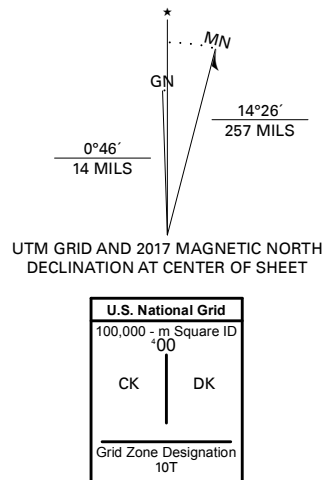


FORTUNA QUADRANGLE
CALIFORNIA - HUMBOLDT COUNTY
7.5-MINUTE SERIES



Produced by the United States Geological Survey

North American Datum of 1983 (NAD83)
World Geodetic System of 1984 (WGS84). Projection and
1 000-meter grid/Universal Transverse Mercator, Zone 10T
This map is not a legal document. Boundaries may be
generalized for this map scale. Private lands within government
reservations may not be shown. Obtain permission before
entering private lands.
Imagery.....NAIP, May 2016 - October 2016
Roads.....U.S. Census Bureau, 2016
Names.....GNIS, 1981 - 2018
Hydrography.....National Hydrography Dataset, 2003 - 2017
Contours.....National Elevation Dataset, 1999
Boundaries.....Multiple sources: see metadata file, 2016 - 2017
Public Land Survey System.....BLM, 2018
Wetlands.....FWS National Wetlands Inventory 2002 - 2010



CONTOUR INTERVAL 40 FEET
NORTH AMERICAN VERTICAL DATUM OF 1988
This map was produced to conform with the
National Geospatial Program US Topo Product Standard, 2011.
A metadata file associated with this product is draft version 0.6.18



1	2	3
4	5	6
7	8	9

- 1 Cannibal Island
- 2 Fields Landing
- 3 McWhinney Creek
- 4 Fernside
- 5 Hydenville
- 6 Capetown
- 7 Taylor Peak
- 8 Scotia

ROAD CLASSIFICATION	
Expressway	Local Connector
Secondary Hwy	Local Road
Ramp	4WD
Interstate Route	US Route
	State Route

FORTUNA, CA
2018

