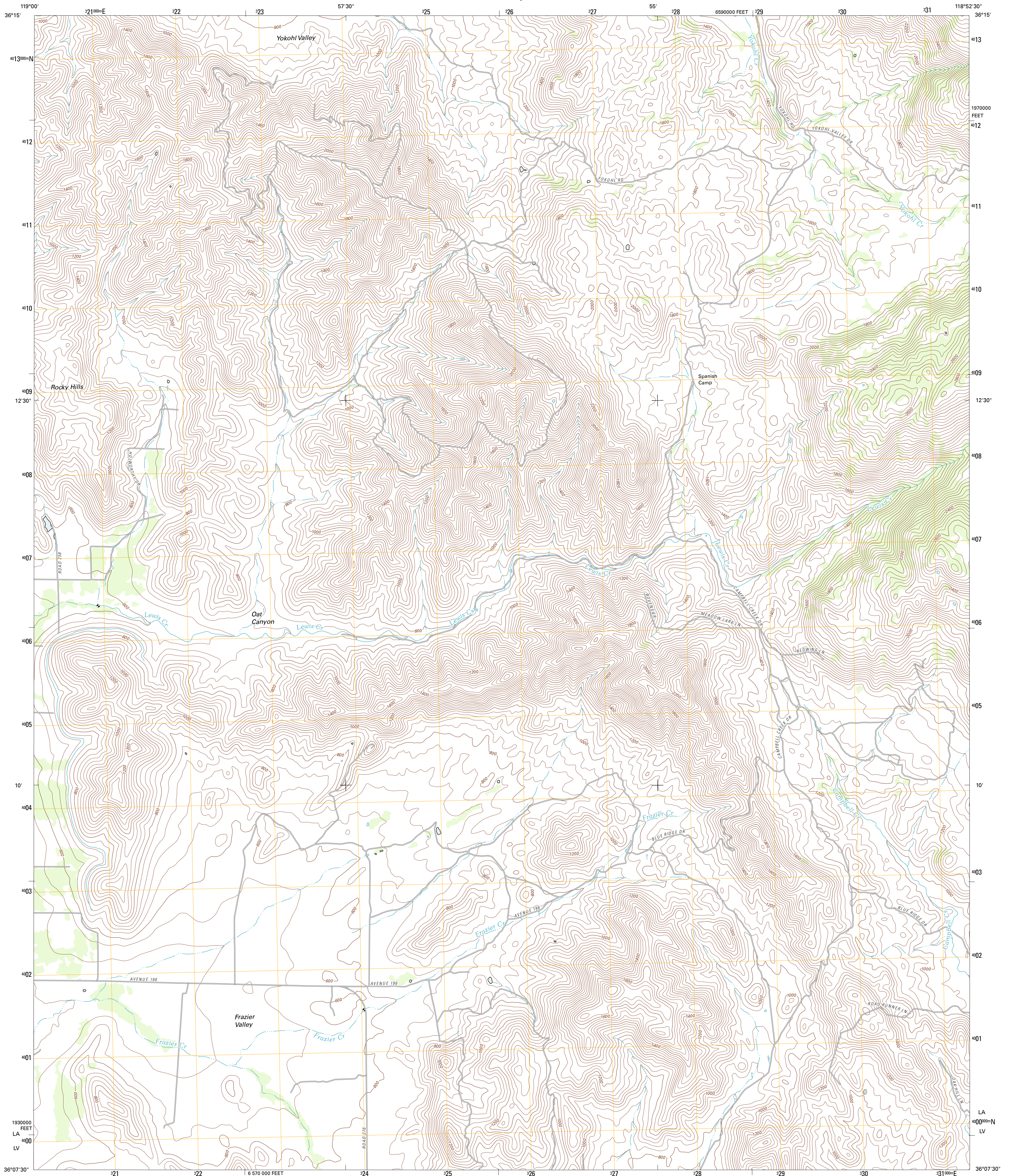




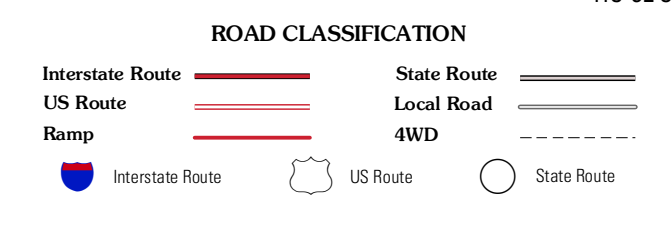
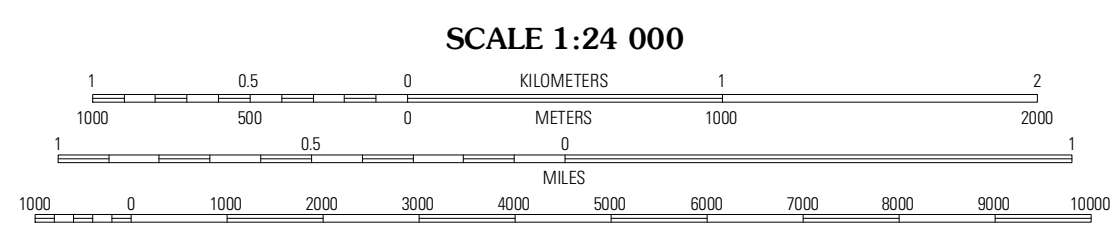
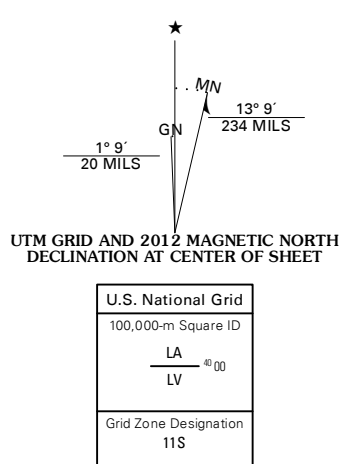
U.S. DEPARTMENT OF THE INTERIOR
U. S. GEOLOGICAL SURVEY



FRAZIER VALLEY QUADRANGLE
CALIFORNIA-TULARE CO.
7.5-MINUTE SERIES



Produced by the United States Geological Survey
North American Datum of 1983 (NAD83)
World Geodetic System of 1984 (WGS84). Projection and
1 000-meter grid: Universal Transverse Mercator, Zone 11S
10 000-foot ticks: California Coordinate System of 1983
(zone 4)



Imagery.....NAP, July 2010
Roads.....©2006-2011 TomTom
Names.....GNIS, 2011
Hydrography.....National Hydrography Dataset, 2010
Contours.....National Elevation Dataset, 2001
Boundaries.....Census, IBWC, IBC, USGS, 1972 - 2010

U.S. National Grid	12° 9'
100,000-m Square ID	LA
Grid Zone Designation	11S

CONTOUR INTERVAL 40 FEET
NORTH AMERICAN VERTICAL DATUM OF 1988
This map was produced to conform with the
National Geospatial Program US Topo Product Standard, 2011.
A metadata file associated with this product is draft version 0.6.1

QUADRANGLE LOCATION

Rocky Hill	Chicken Canyon	Denison Peak
Landoop	Frazier Valley	Springville
Porterville	Success Dam	Globe

FRAZIER VALLEY, CA
2012

ADJOINING 7.5' QUADRANGLES