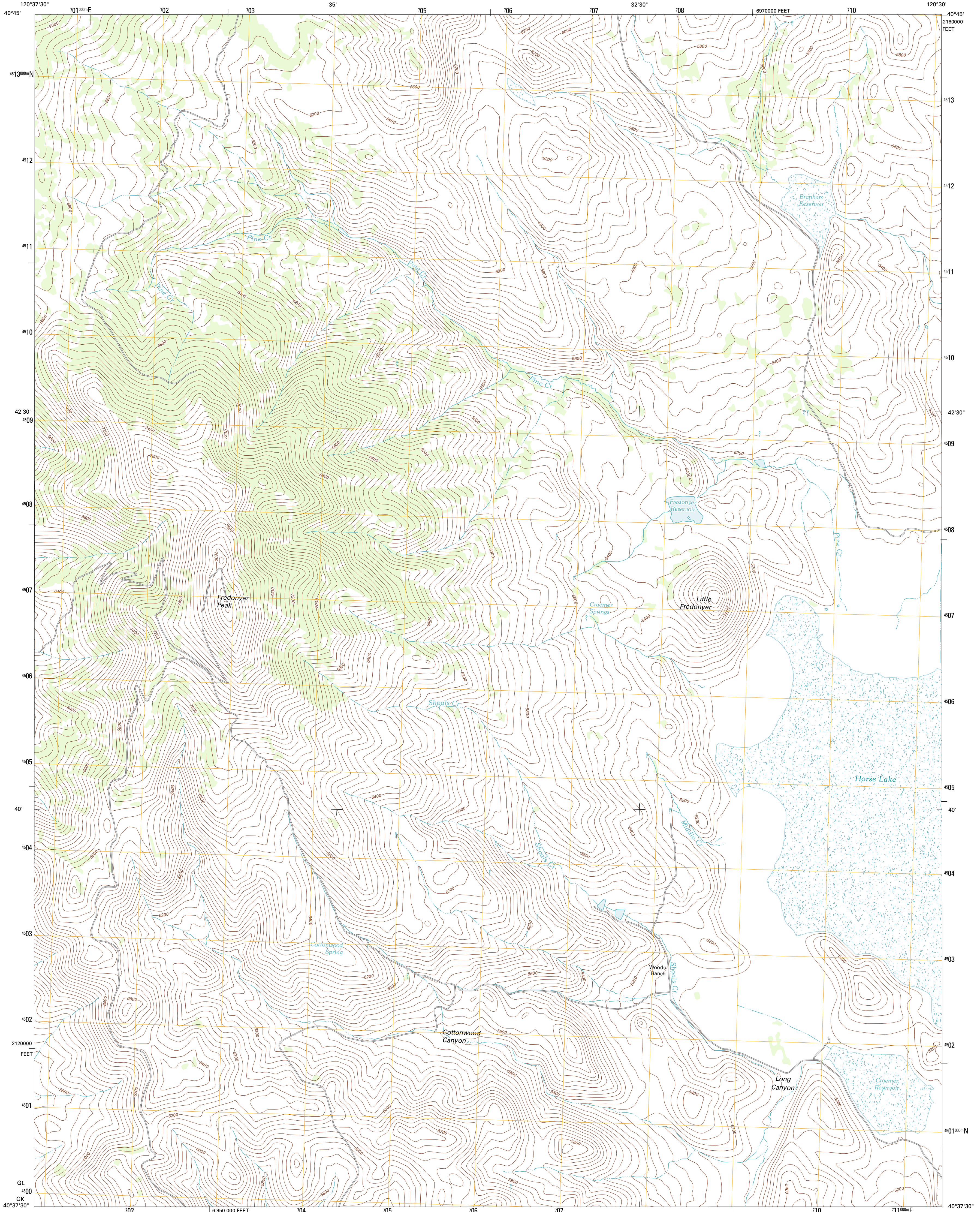




U.S. DEPARTMENT OF THE INTERIOR
U. S. GEOLOGICAL SURVEY

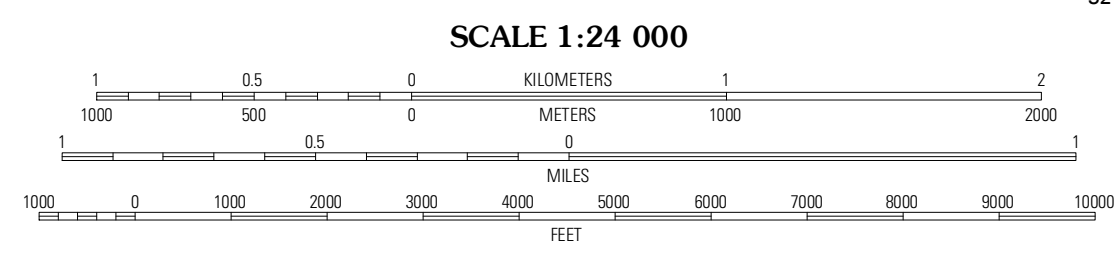
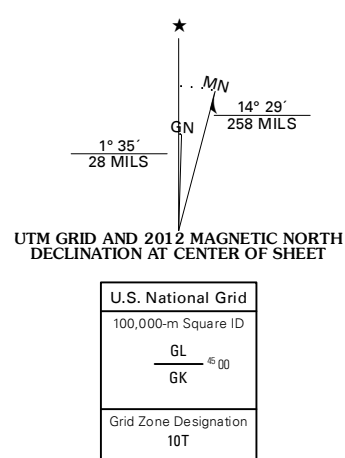


FREDONYER PEAK QUADRANGLE
CALIFORNIA-LASSEN CO.
7.5-MINUTE SERIES



Produced by the United States Geological Survey
North American Datum of 1983 (NAD83)
World Geodetic System of 1984 (WGS84) Projection and
1 000-meter grid; Universal Transverse Mercator, Zone 10T
10 000-foot ticks; California Coordinate System of 1983
(zone 1)

Imagery.....NAIP, July 2010
Roads.....©2006-2011 TomTom
Names.....GNIS, 2011
Hydrography.....National Hydrography Dataset, 2010
Contours.....National Elevation Dataset, 2000
Boundaries.....Census, IBWC, IBC, USGS, 1972 - 2010



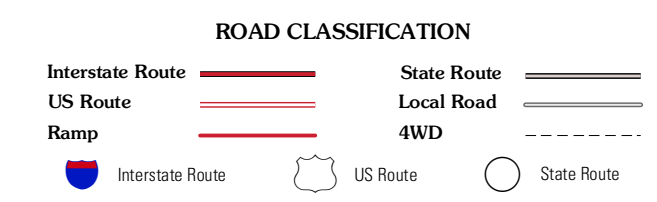
SCALE 1:24 000
CONTOUR INTERVAL 40 FEET
NORTH AMERICAN VERTICAL DATUM OF 1988
This map was produced to conform with the
National Geospatial Program US Topo Product Standard, 2011.
A metadata file associated with this product is draft version 0.6.1



QUADRANGLE LOCATION

Grasshopper Valley	Keogh Flat	Terro
Trosl Point	Fredonyer Peak	West of Snowstorm Mountain
Gallatin Peak	Turnison Mountain	Peres Valley

ADJOINING 7.5 QUADRANGLES



FREDONYER PEAK, CA
2012