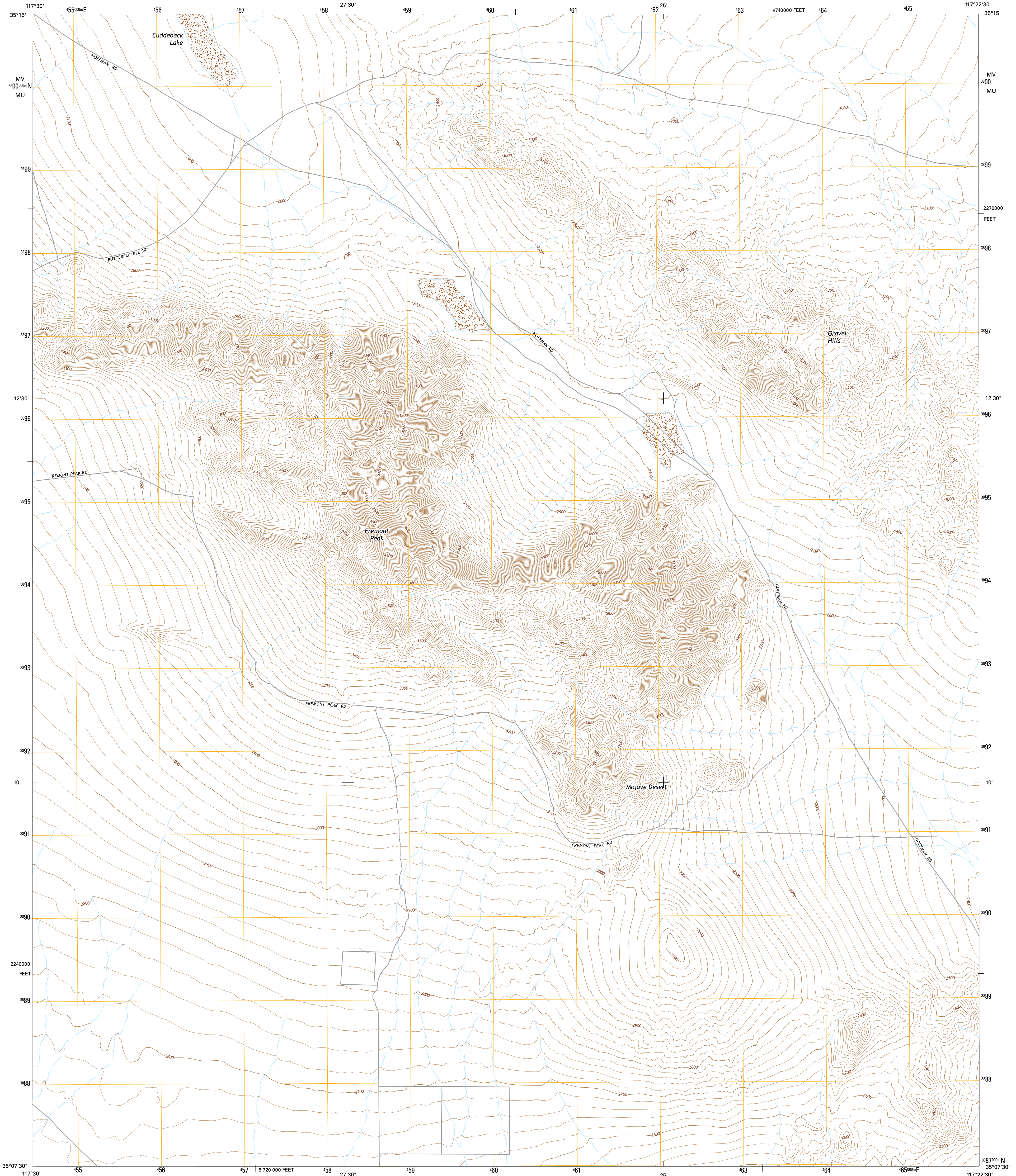




U.S. DEPARTMENT OF THE INTERIOR  
U.S. GEOLOGICAL SURVEY

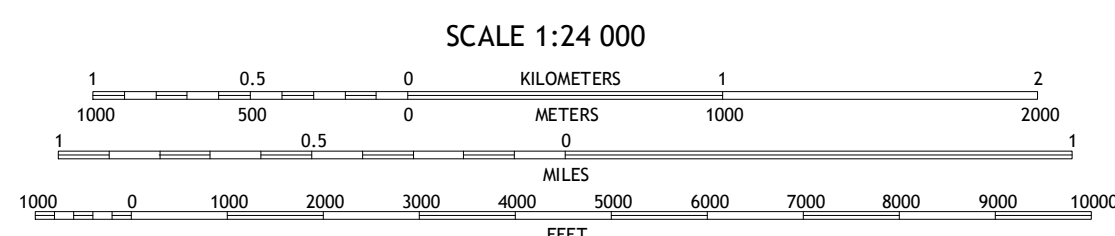
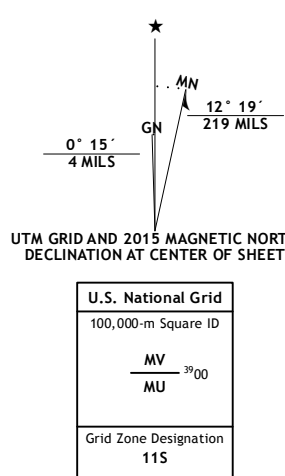


FREMONT PEAK QUADRANGLE  
CALIFORNIA-SAN BERNARDINO CO.  
7.5-MINUTE SERIES



**Produced by the United States Geological Survey**  
 North American Datum of 1983 (NAD83)  
 World Geodetic System of 1984 (WGS84). Projection and  
 1 000-foot grid: Universal Transverse Mercator, Zone 11S  
 10 000-foot ticks: California Coordinate System of 1983 (zone 5)  
 This map is not a legal document. Boundaries may be  
 generalized for this map scale. Private lands within government  
 reservations may not be shown. Obtain permission before  
 entering private lands.

Imagery.....NAIP, April 2012  
 Roads.....HERE, ©2013 - 2014  
 Names.....GNIS, 2015  
 Hydrography.....National Hydrography Dataset, 2012  
 Contours.....National Elevation Dataset, 2006  
 Boundaries.....Multiple sources; see metadata file 1972 - 2015  
 Public Land Survey System.....BLM, 2011



CONTOUR INTERVAL 20 FEET  
NORTH AMERICAN VERTICAL DATUM OF 1988

This map was produced to conform with the  
National Geospatial Program US Topo Product Standard, 2011.  
A metadata file associated with this product is draft version 0.6.18



**ROAD CLASSIFICATION**

Expressway	Local Connector
Secondary Hwy	Local Road
Ramp	4WD
Interstate Route	US Route
	State Route

ADJOINING QUADRANGLES

1	2	3
4	5	6
7	8	

- 1 Red Mountain
- 2 Cuddeback Lake
- 3 Blackwater Well
- 4 Boron NE
- 5 Bird Spring
- 6 Saddleback Mountain
- 7 The Buttes
- 8 Lockhart

FREMONT PEAK, CA  
2015

