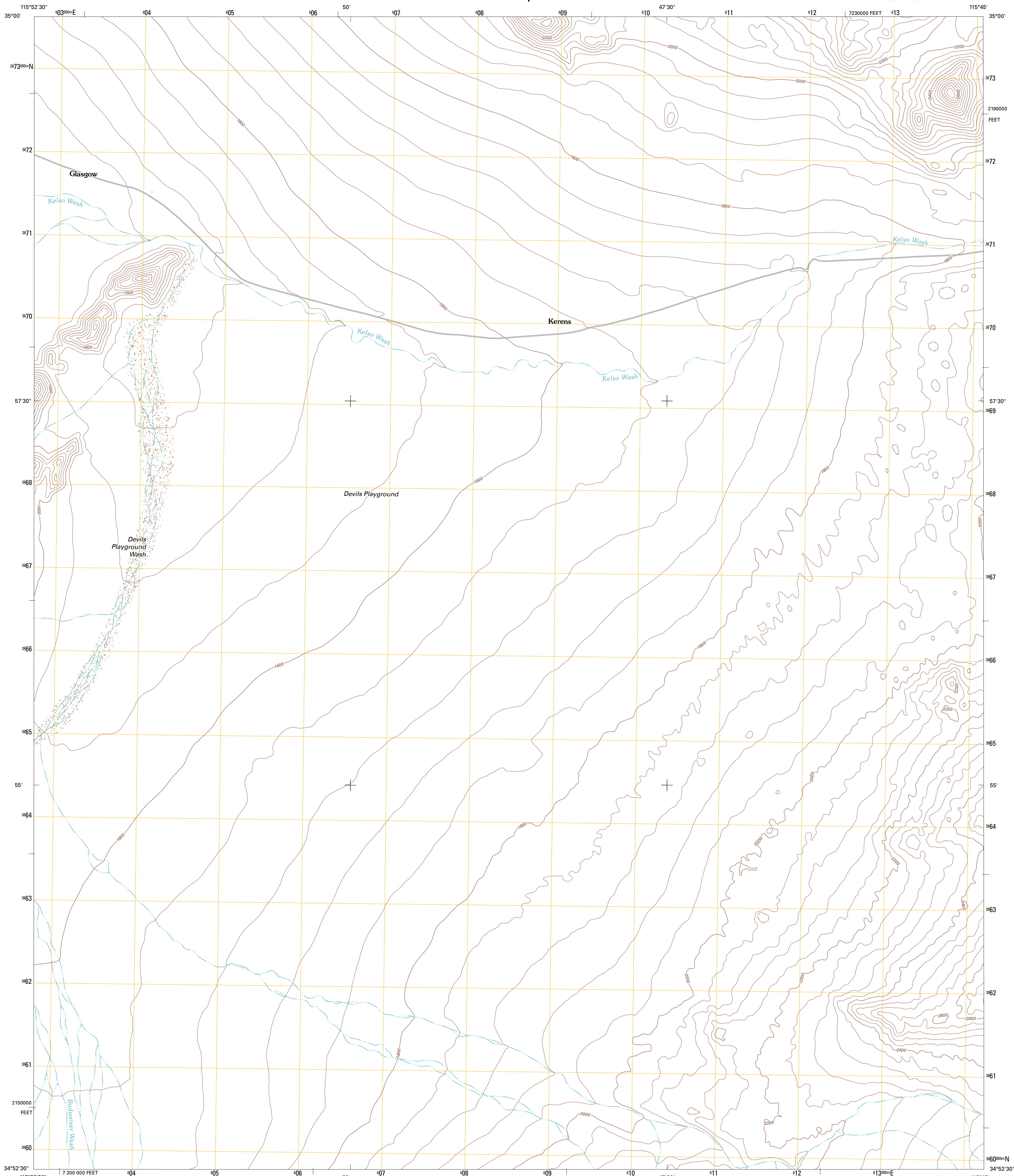




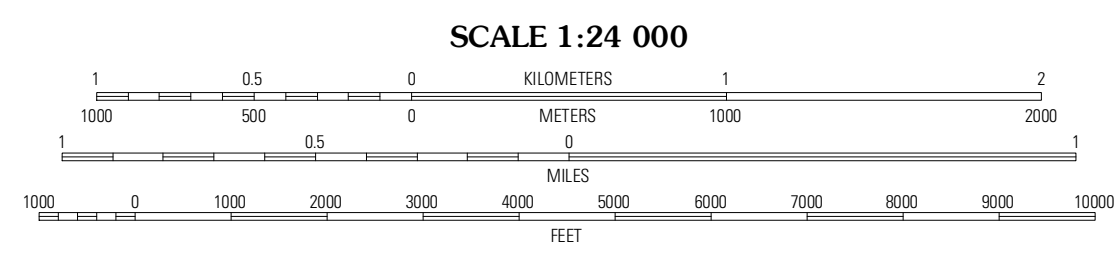
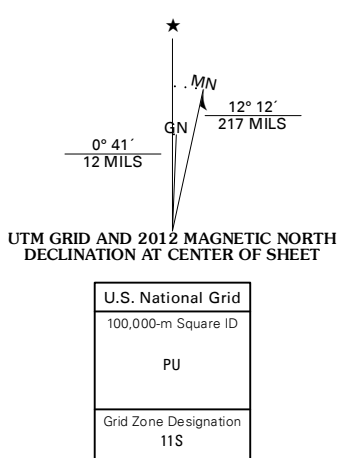
U.S. DEPARTMENT OF THE INTERIOR  
U. S. GEOLOGICAL SURVEY



GLASGOW QUADRANGLE  
CALIFORNIA-SAN BERNARDINO CO.  
7.5-MINUTE SERIES



Produced by the United States Geological Survey  
North American Datum of 1983 (NAD83)  
Roads:.....S/2006-2011 TomTom  
Names:.....GNIS, 2011  
Hydrography:.....National Hydrography Dataset, 2010  
Contours:.....National Elevation Dataset, 2006  
Boundaries:.....Census, IBWC, IBC, USGS, 1972 - 2010  
(zone 9)



CONTOUR INTERVAL 40 FEET  
NORTH AMERICAN VERTICAL DATUM OF 1988

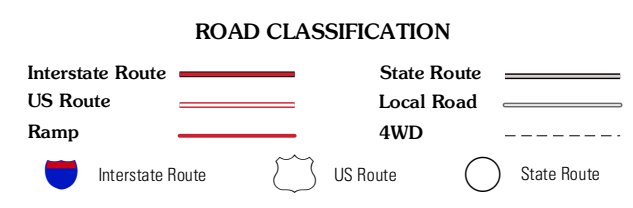
This map was produced to conform with the National Geospatial Program US Topo Product Standard, 2011. A metadata file associated with this product is draft version 0.6.1



QUADRANGLE LOCATION

Cowhole Mountain	Old Dad Mountain	Kelso
West of Glasgow	Glasgow	Kelso Dunes
West of Budweiser Wash	Budweiser Wash	Bighorn Basin

ADJOINING 7.5 QUADRANGLES



GLASGOW, CA  
2012