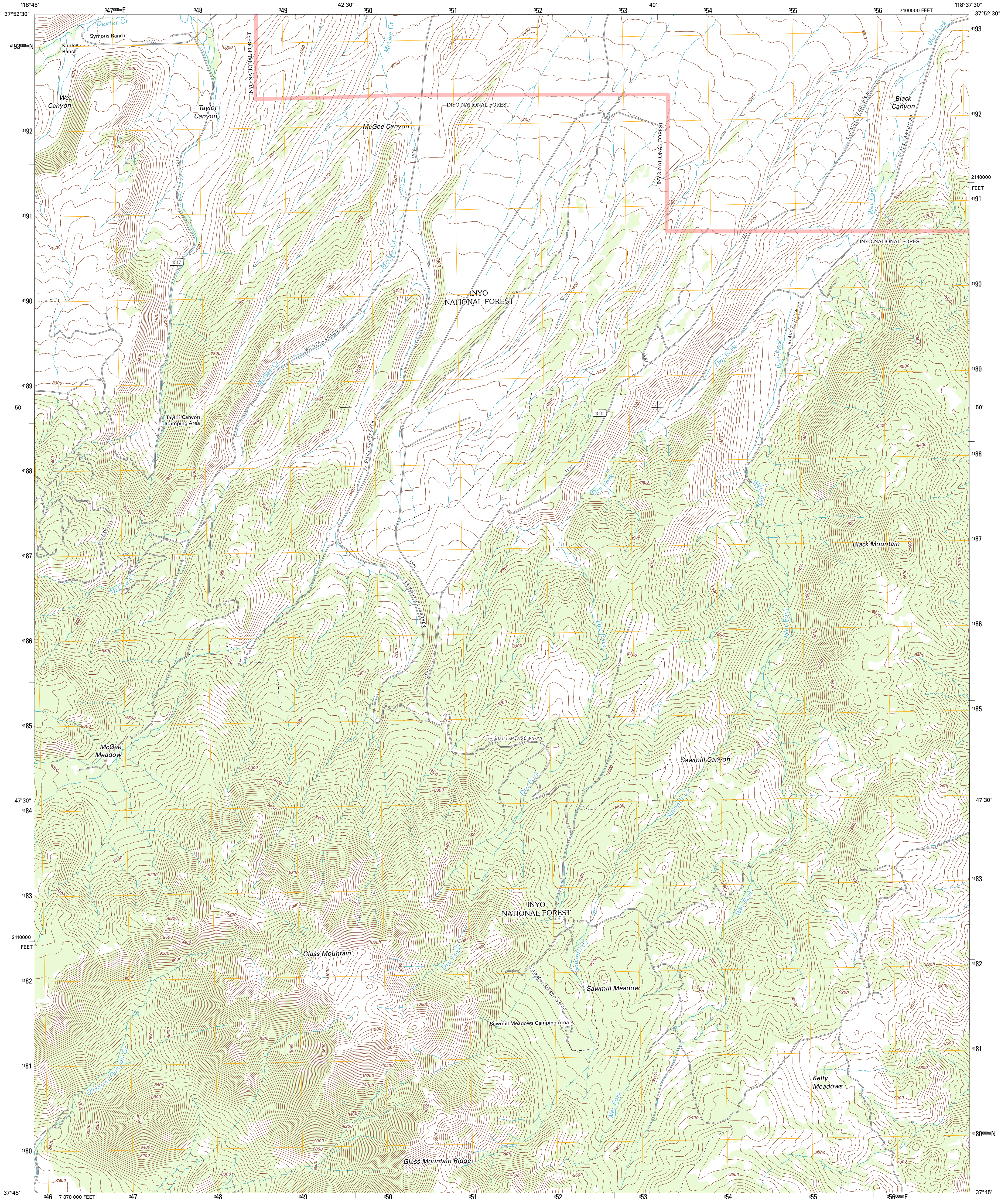




U.S. DEPARTMENT OF THE INTERIOR  
U. S. GEOLOGICAL SURVEY



GLASS MOUNTAIN QUADRANGLE  
CALIFORNIA-MONO CO.  
7.5-MINUTE SERIES



Produced by the United States Geological Survey  
North American Datum of 1983 (NAD83)  
World Geodetic System of 1984 (WGS84). Projection and  
1 000 meter grid: Universal Transverse Mercator, Zone 11S  
10 000-foot ticks: California Coordinate System of 1983  
(zone 3)

Imagery: N.A.P. June 2010 - August 2010  
Roads: ©2006-2011 TomTom  
Roads within US Forest Service Lands: FSTopo Data  
with limited Forest Service updates, 2009  
Names: G.N.S., 2011  
Hydrography: National Hydrography Dataset, 2010  
Contours: National Elevation Dataset, 1999  
Boundaries: Census, IBWC, IBC, USGS, 1972 - 2010

