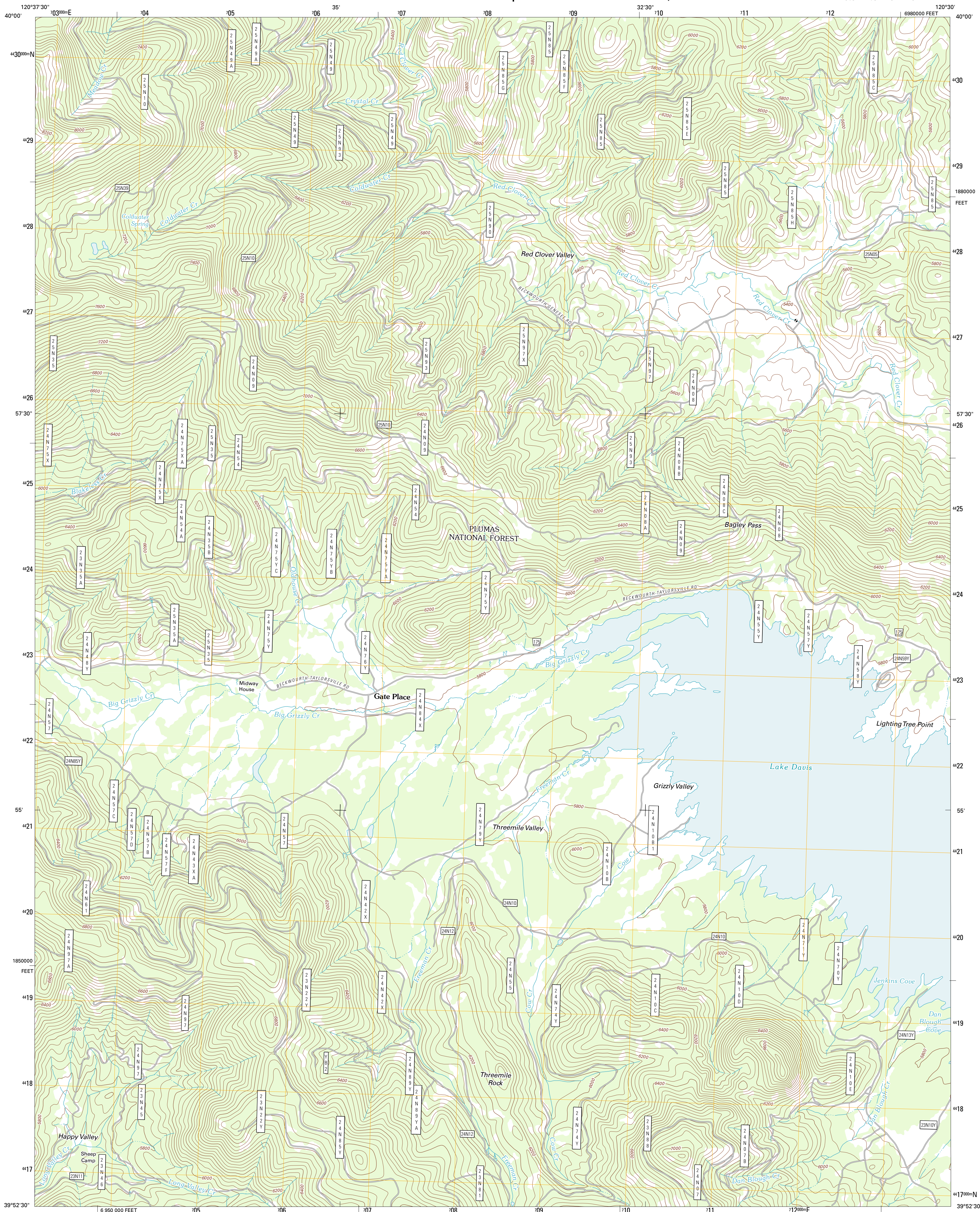




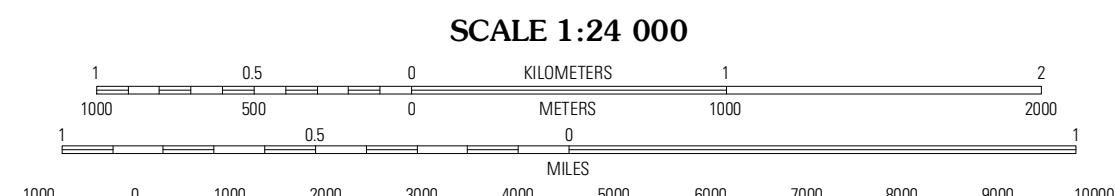
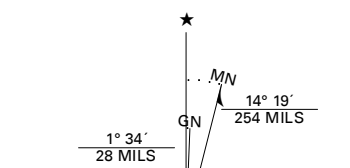
U.S. DEPARTMENT OF THE INTERIOR
U. S. GEOLOGICAL SURVEY



GRIZZLY VALLEY QUADRANGLE
CALIFORNIA-PLUMAS CO.
7.5-MINUTE SERIES



Produced by the United States Geological Survey
North American Datum of 1983 (NAD83)
World Geodetic System of 1984 (WGS84). Projection and
1 000-meter grid: Universal Transverse Mercator, Zone 10S
10 000-foot ticks: California Coordinate System of 1983
(zone 1)



ROAD CLASSIFICATION

Interstate Route	State Route
US Route	Local Road
Ramp	4WD
FS Primary Route	FS Passenger Route
FS High Clearance Route	

Imagery: NAIP, July 2010
Roads: ©2006-2011 TomTom
Roads within US Forest Service Lands with limited Forest Service updates, 2009
Names: GNIS, 2011
Hydrography: National Hydrography Dataset, 2010
Contours: National Elevation Dataset, 1999
Boundaries: Census, IBWC, IBC, USGS, 1972 - 2010

U.S. National Grid 100,000m Square ID	BK
Grid Zone Designation	10S

CONTOUR INTERVAL 40 FEET
NORTH AMERICAN VERTICAL DATUM OF 1988
This map was produced to conform with the
National Geospatial Program US Topo Product Standard, 2011.
A metadata file associated with this product is draft version 0.6.1

QUADRANGLE LOCATION

Genesee Valley	Babcock Peak	Ross Canyon
Mount Ingalls	Grizzly Valley	Crocker Mountains
Johnsonville	Hairden	Portola

Check with local Forest Service unit
for current travel conditions and restrictions.

GRIZZLY VALLEY, CA
2012

ADJOINING 7.5 QUADRANGLES