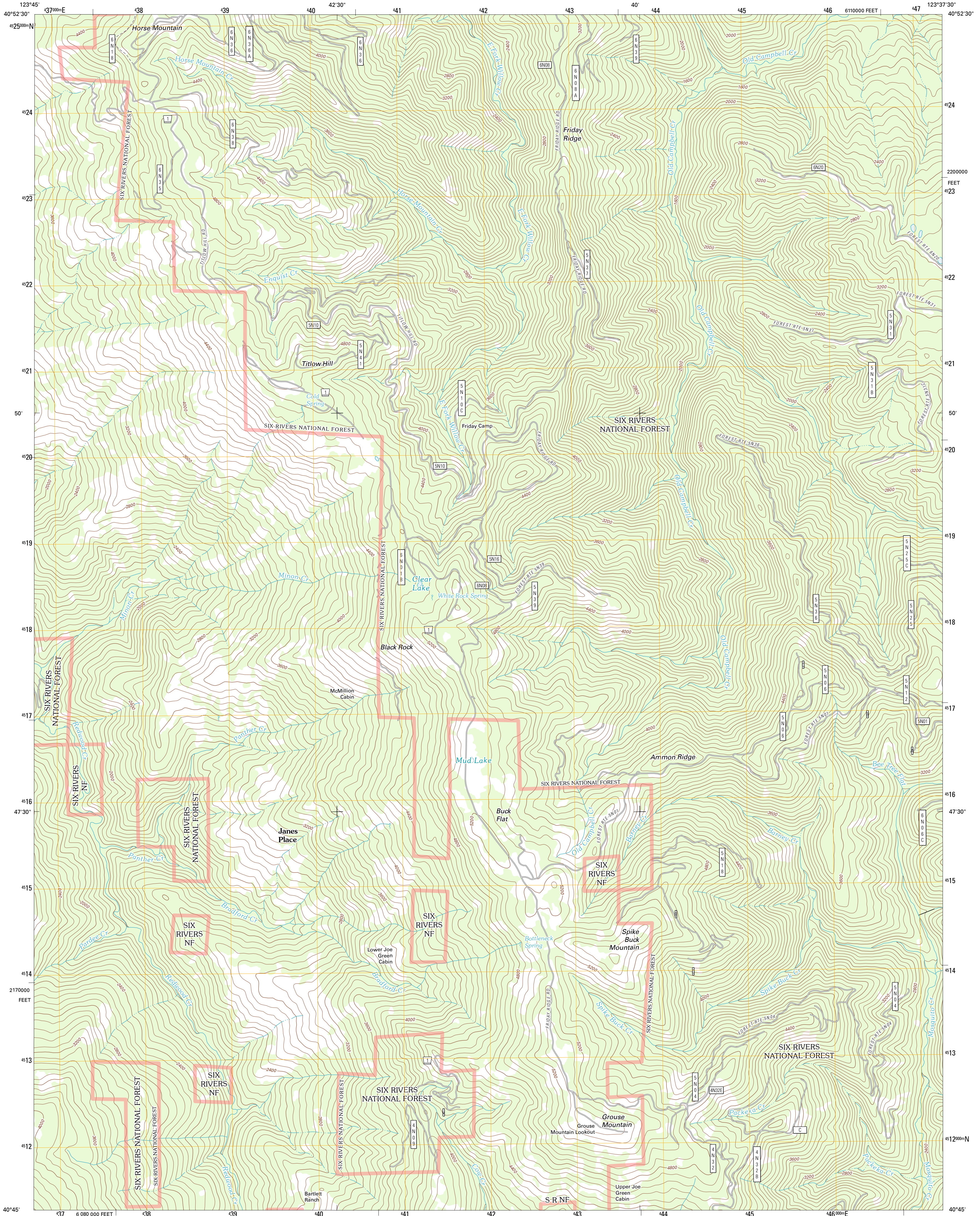




U.S. DEPARTMENT OF THE INTERIOR
U. S. GEOLOGICAL SURVEY

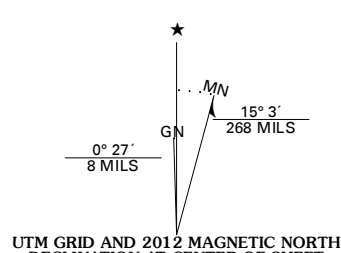


GROUSE MOUNTAIN QUADRANGLE
CALIFORNIA-HUMBOLDT CO.
7.5-MINUTE SERIES

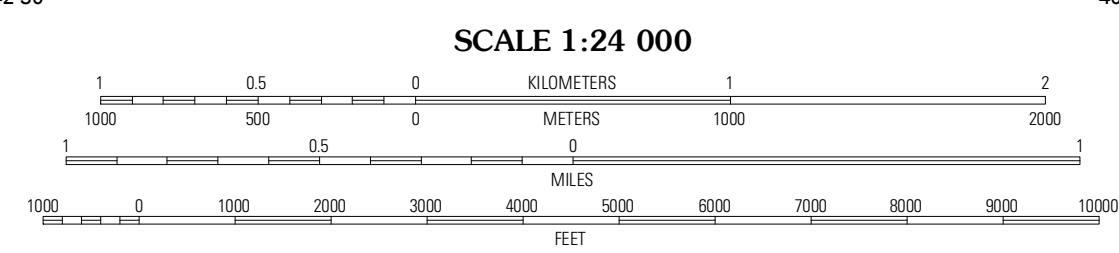


Produced by the United States Geological Survey
North American Datum of 1983 (NAD83)
World Geodetic System of 1984 (WGS84) Projection and
1,000-meter grid; Universal Transverse Mercator, Zone 10T
10,000-foot ticks; California Coordinate System of 1983
(zone 1)

Imagery:.....NAIP, June 2010 - August 2010
Roads:.....©2006-2011 TomTom
Roads within US Forest Service Lands:.....FS Topo Data
with limited Forest Service updates, 2009
Names:.....GNIS, 2011
Hydrography:.....National Hydrography Dataset, 2010
Contours:.....National Elevation Dataset, 1999
Boundaries:.....Census, IBWC, IBC, USGS, 1972 - 2010

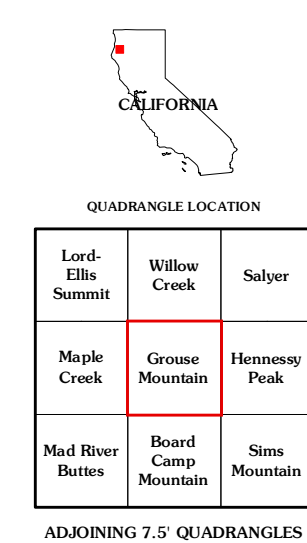


U.S. National Grid
100,000-m Square ID
DL
Grid Zone Designation
10T

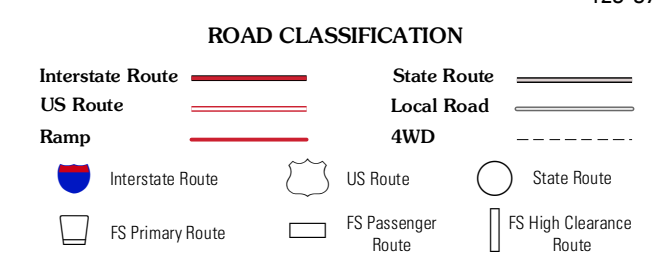


CONTOUR INTERVAL 80 FEET
NORTH AMERICAN VERTICAL DATUM OF 1988

This map was produced to conform with the
National Geospatial Program US Topo Product Standard, 2011.
A metadata file associated with this product is draft version 0.6.1



Lord-Elles Summit	Willow Creek	Salzer
Maple Creek	Grouse Mountain	Hennessey Peak
Mad River Buttes	Board Camp Mountain	Sims Mountain



Check with local Forest Service unit
for current travel conditions and restrictions.

GROUSE MOUNTAIN, CA
2012

ADJOINING 7.5 QUADRANGLES