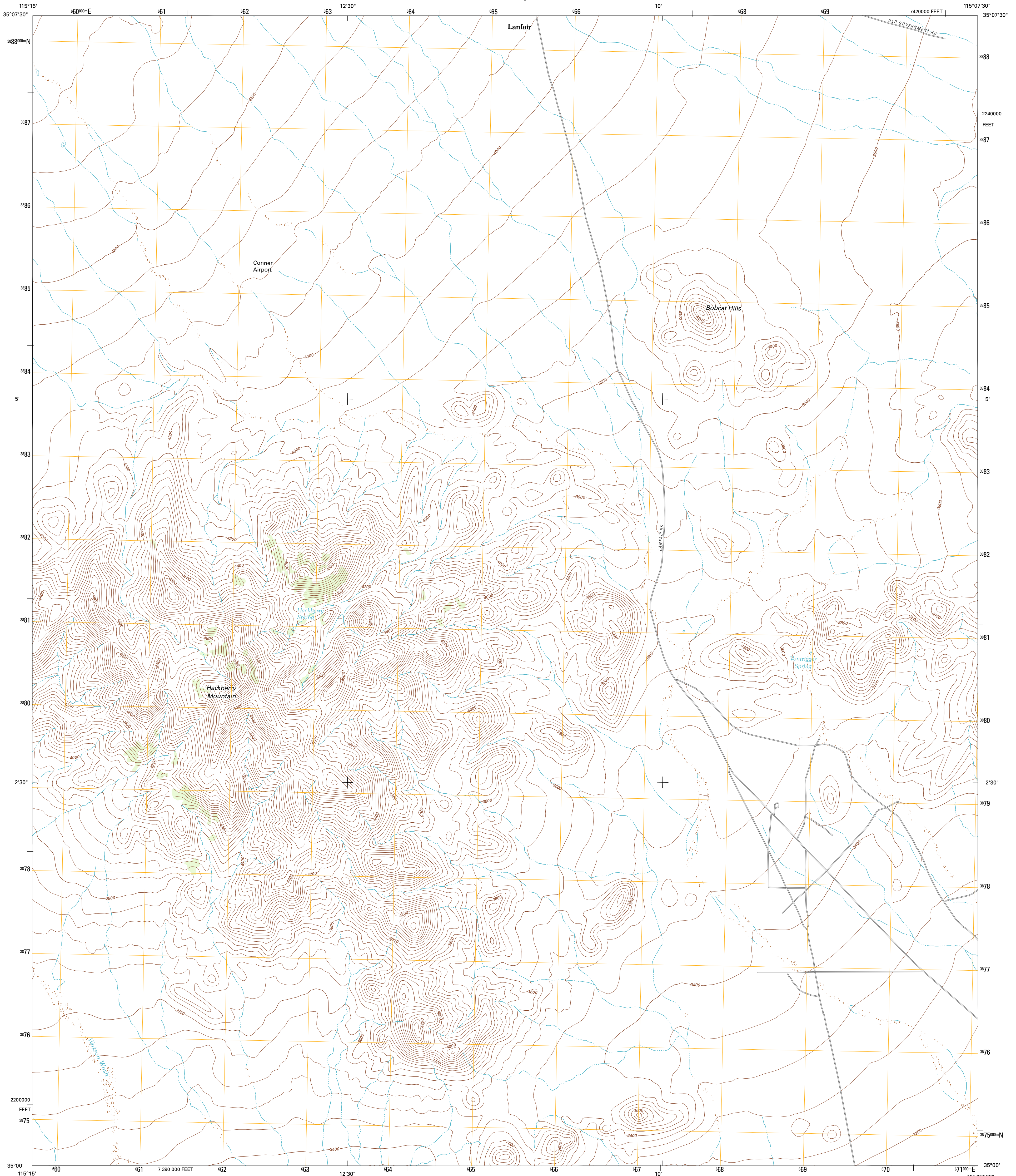




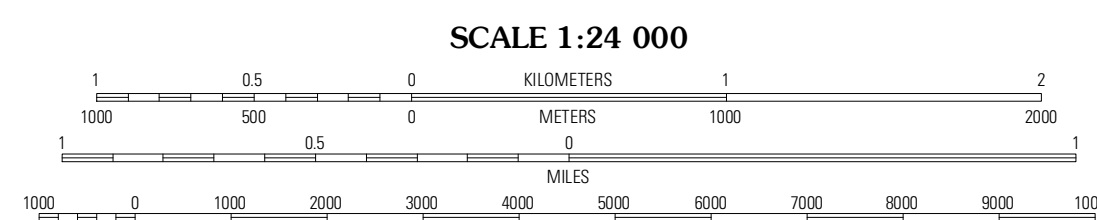
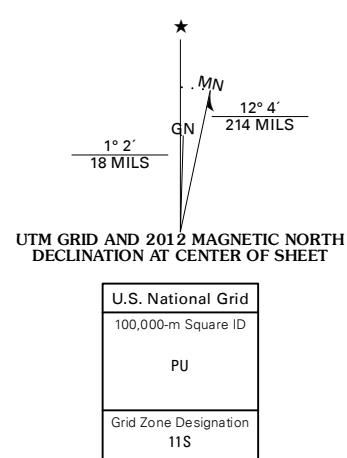
U.S. DEPARTMENT OF THE INTERIOR
U. S. GEOLOGICAL SURVEY



HACKBERRY MOUNTAIN QUADRANGLE
CALIFORNIA-SAN BERNARDINO CO.
7.5-MINUTE SERIES



Produced by the United States Geological Survey
North American Datum of 1983 (NAD83)
Roads..... ©2006-2011 TomTom
Names..... GNIS, 2011
Hydrography..... National Hydrography Dataset, 2010
Contours..... National Elevation Dataset, 2006
Boundaries..... Census, BWC, IBC, USGS, 1972 - 2010



CONTOUR INTERVAL 40 FEET
NORTH AMERICAN VERTICAL DATUM OF 1988

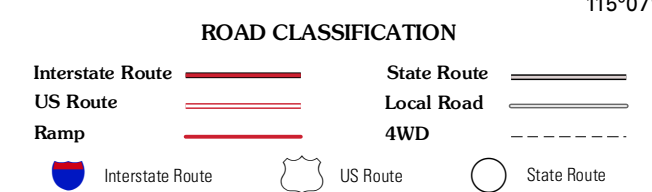
This map was produced to conform with the National Geospatial Program US Topo Product Standard, 2011. A metadata file associated with this product is draft version 0.6.1



QUADRANGLE LOCATION

Pinto Valley	Groto Hills	East of Groto Hills
Woods Mountains	Hackberry Mountain	Signal Hill
Desert Spring	Fenner Hills	Goffs

ADJOINING 7.5' QUADRANGLES



HACKBERRY MOUNTAIN, CA
2012