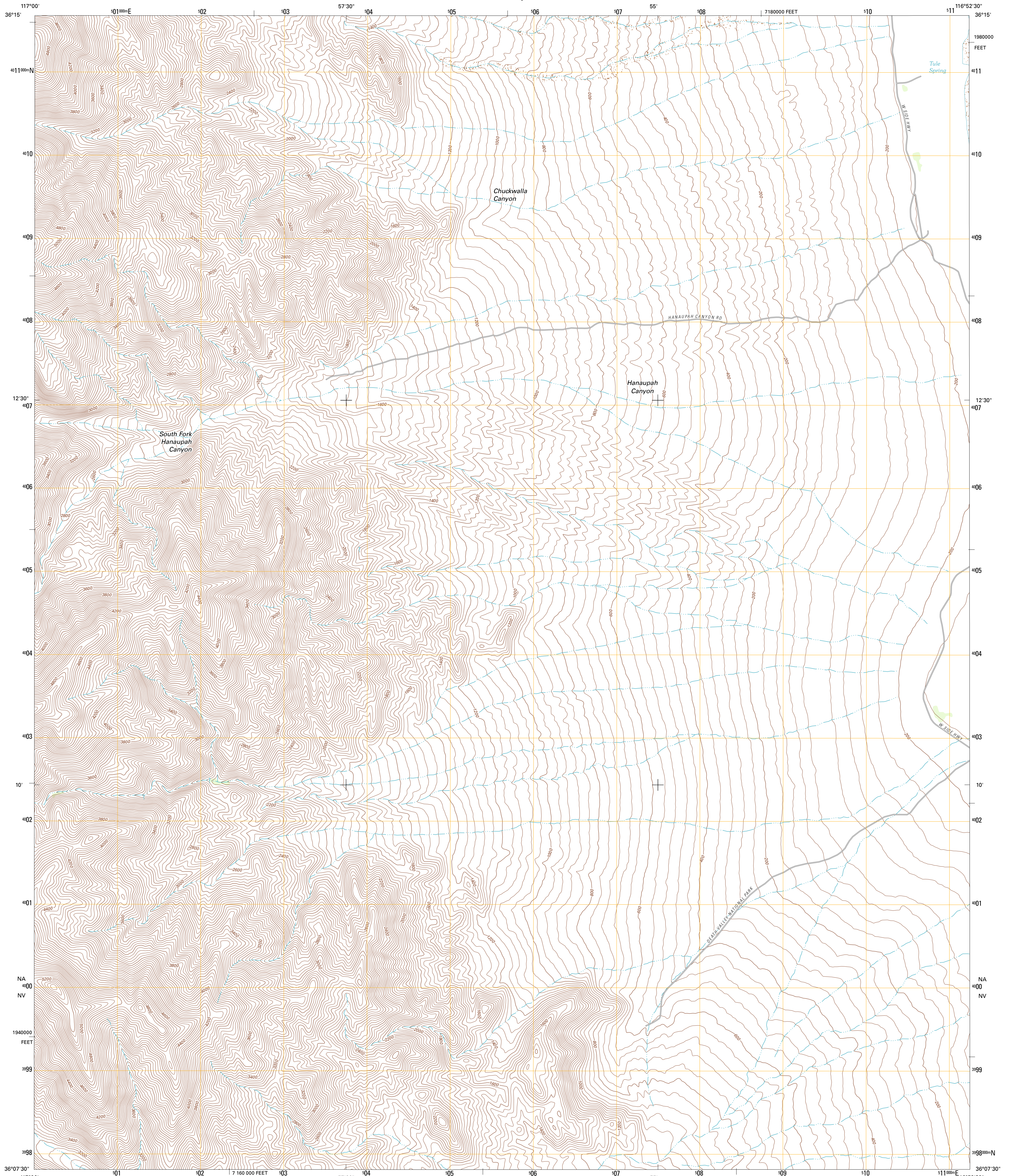




U.S. DEPARTMENT OF THE INTERIOR
U. S. GEOLOGICAL SURVEY

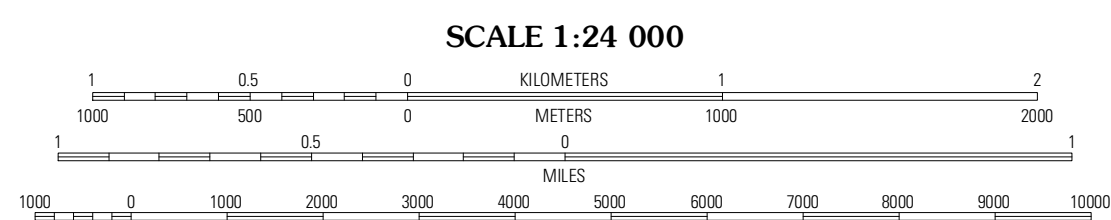
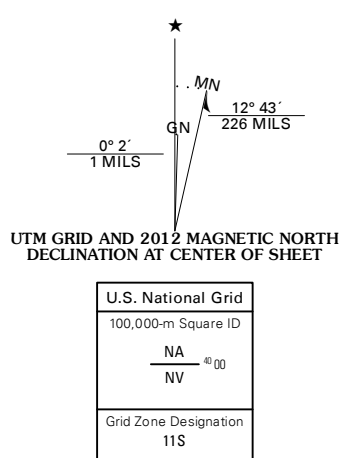


HANAUPAH CANYON QUADRANGLE
CALIFORNIA-INYO CO.
7.5-MINUTE SERIES



Produced by the United States Geological Survey
North American Datum of 1983 (NAD83)
World Geodetic System of 1984 (WGS84). Projection and
10 000-foot ticks: California Coordinate System of 1983
(zone 4)

Imagery:.....NAP, July 2010
Roads:.....©2006-2011 TomTom
Names:.....GNIS, 2011
Hydrography:.....National Hydrography Dataset, 2010
Contours:.....National Elevation Dataset, 2007
Boundaries:.....Census, IBWC, IBC, USGS, 1972-2010



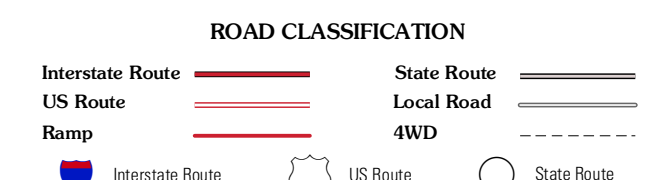
CONTOUR INTERVAL 40 FEET
NORTH AMERICAN VERTICAL DATUM OF 1988

This map was produced to conform with the
National Geospatial Program US Topo Product Standard, 2011.
A metadata file associated with this product is draft version 0.6.1



QUADRANGLE LOCATION

Wildrose Peak	Devils Highway	Devils Golf Course
Telescope Peak	Hanaupah Canyon	Bedwater
Panamint	Galena Canyon	Mormon Point



HANAUPAH CANYON, CA
2012

ADJOINING 7.5' QUADRANGLES