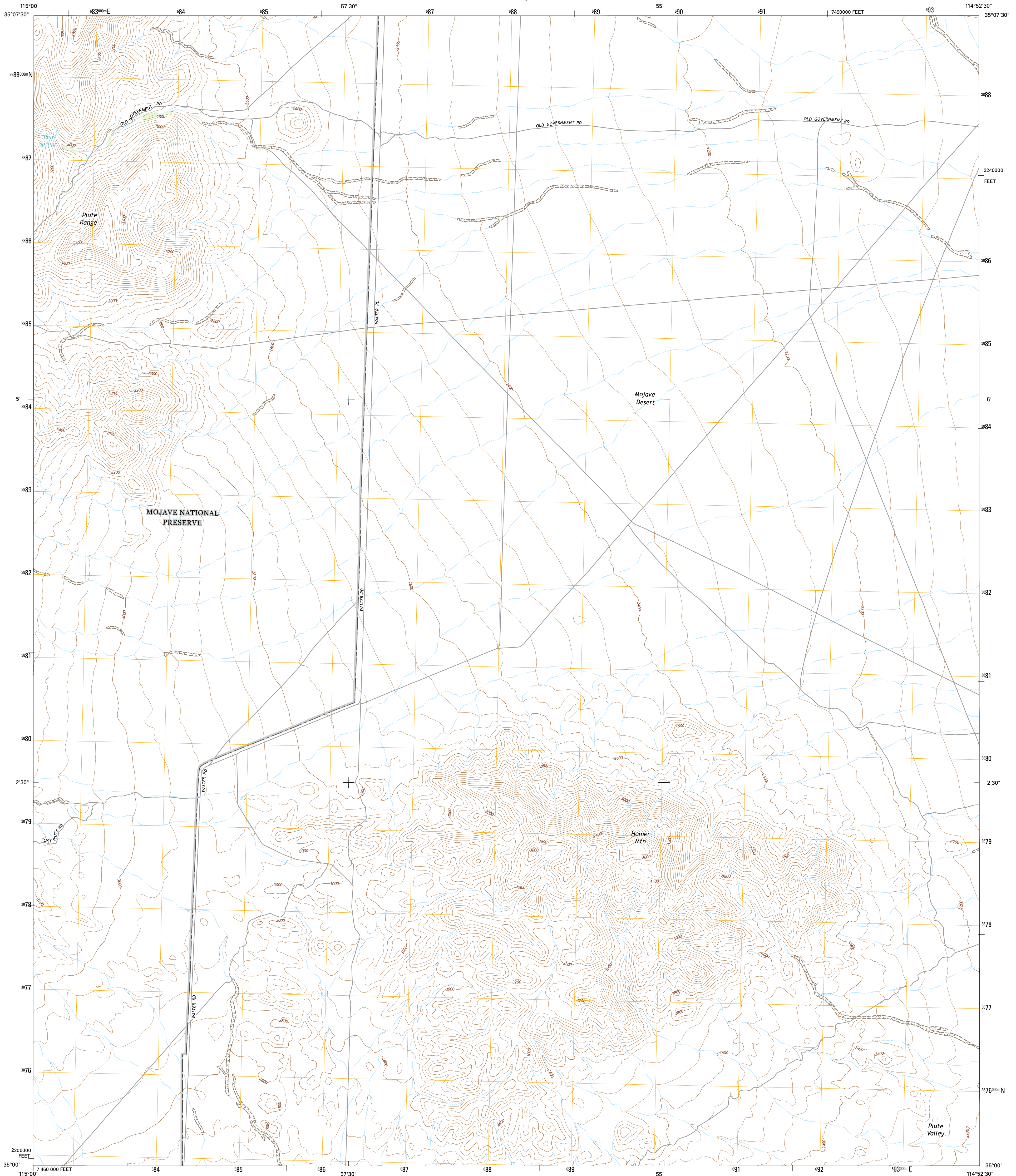




U.S. DEPARTMENT OF THE INTERIOR
U.S. GEOLOGICAL SURVEY

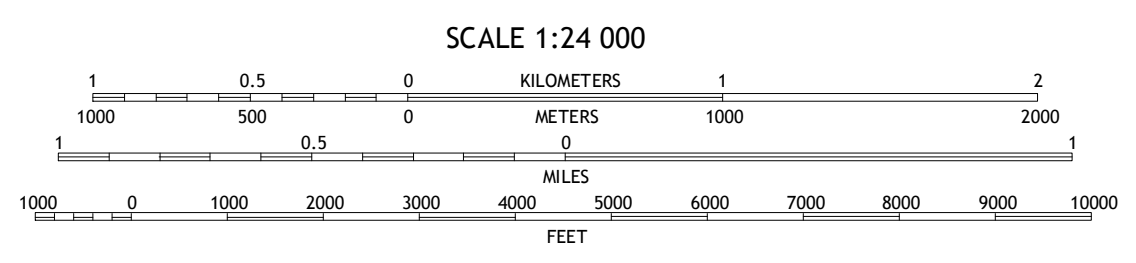
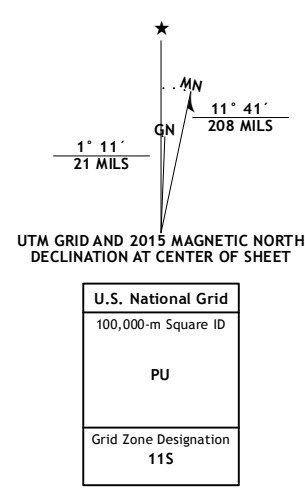


HOMER MOUNTAIN QUADRANGLE
CALIFORNIA-SAN BERNARDINO CO.
7.5-MINUTE SERIES



Produced by the United States Geological Survey
 North American Datum of 1983 (NAD83)
 World Geodetic System of 1984 (WGS84). Projection and
 1 000-meter grid: Universal Transverse Mercator, Zone 11S
 10 000-foot ticks: California Coordinate System of 1983 (zone 5)
 This map is not a legal document. Boundaries may be
 generalized for this map scale. Private lands within government
 reservations may not be shown. Obtain permission before
 entering private lands.

Imagery.....NAIP, April 2012
 Roads.....HERE, ©2013 - 2014
 Names.....GNIS, 2015
 Hydrography.....National Hydrography Dataset, 2012
 Contours.....National Elevation Dataset, 2004
 Boundaries.....Multiple sources; see metadata file 1972 - 2015
 Public Land Survey System.....BLM, 2011



ROAD CLASSIFICATION

| | |
|------------------|-----------------|
| Expressway | Local Connector |
| Secondary Hwy | Local Road |
| Ramp | 4WD |
| Interstate Route | US Route |
| | State Route |

CONTOUR INTERVAL 40 FEET
NORTH AMERICAN VERTICAL DATUM OF 1988

This map was produced to conform with the
National Geospatial Program US Topo Product Standard, 2011.
A metadata file associated with this product is draft version 0.6.18

| | | |
|---|---|---|
| 1 | 2 | 3 |
| 4 | 5 | 6 |
| 7 | 8 | |

ADJOINING QUADRANGLES

1 East of Grotto Hills
 2 West of Juniper Mine
 3 Juniper Mine
 4 Signal Hill
 5 East of Homer Mountain
 6 Goffs
 7 Homer
 8 Bannock

HOMER MOUNTAIN, CA
2015

