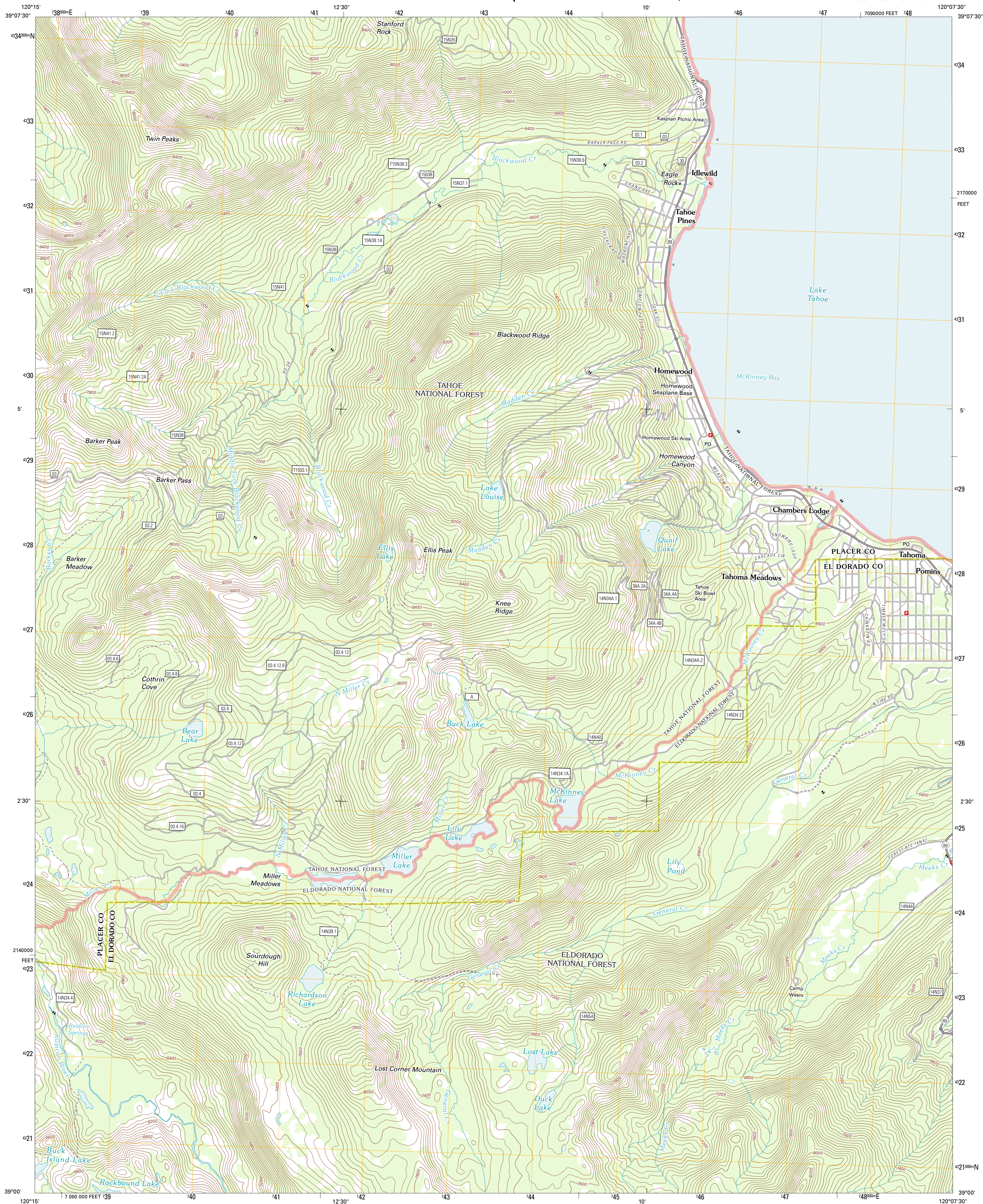




U.S. DEPARTMENT OF THE INTERIOR
U. S. GEOLOGICAL SURVEY

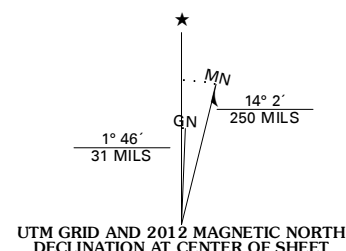


HOMWOOD QUADRANGLE
CALIFORNIA
7.5-MINUTE SERIES

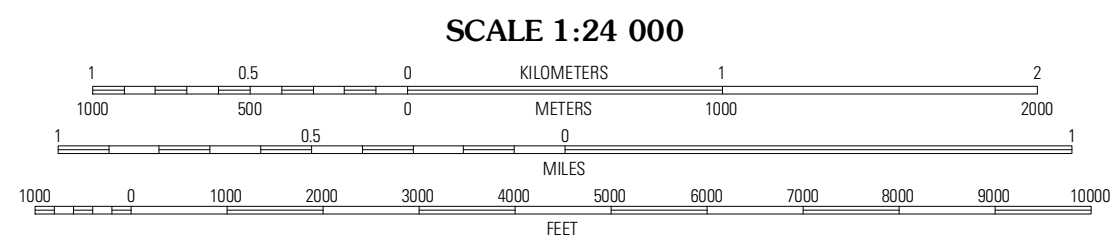


Produced by the United States Geological Survey
North American Datum of 1983 (NAD83)
World Geodetic System of 1984 (WGS84). Projection and
1 000-meter grid Universal Transverse Mercator, Zone 10S
10 000-foot ticks: California Coordinate System of 1983
(zone 2)

Imagery.....NAIP, July 2010
Roads.....©2006-2011 TomTom
Roads within US Forest Service Lands.....FS Topo Data
with limited Forest Service updates, 2009
Names.....GNIS, 2011
Hydrography.....National Hydrography Dataset, 2010
Contours.....National Elevation Dataset, 1999
Boundaries.....Census, IBWC, IBC, USGS, 1972 - 2010



| |
|---|
| U.S. National Grid 100,000-m Square ID |
| 6J |
| Grid Zone Designation 10S |



CONTOUR INTERVAL 40 FEET
NORTH AMERICAN VERTICAL DATUM OF 1988
This map was produced to conform with the
National Geospatial Program US Topo Product Standard, 2011.
A metadata file associated with this product is draft version 0.6.1



| | | |
|-------------------|------------------|-------------|
| Granite Chief | Tahoe City | Kings Beach |
| Wentworth Springs | Homewood | Meeks Bay |
| Loon Lake | Rockbound Valley | Emerald Bay |

ADJOINING 7.5' QUADRANGLES

| ROAD CLASSIFICATION | | |
|---------------------|--------------------|-------------------------|
| Interstate Route | State Route | Local Road |
| US Route | 4WD | |
| Ramp | | |
| Interstate Route | US Route | State Route |
| FS Primary Route | FS Passenger Route | FS High Clearance Route |

Check with local Forest Service unit
for current travel conditions and restrictions.

HOMWOOD, CA
2012