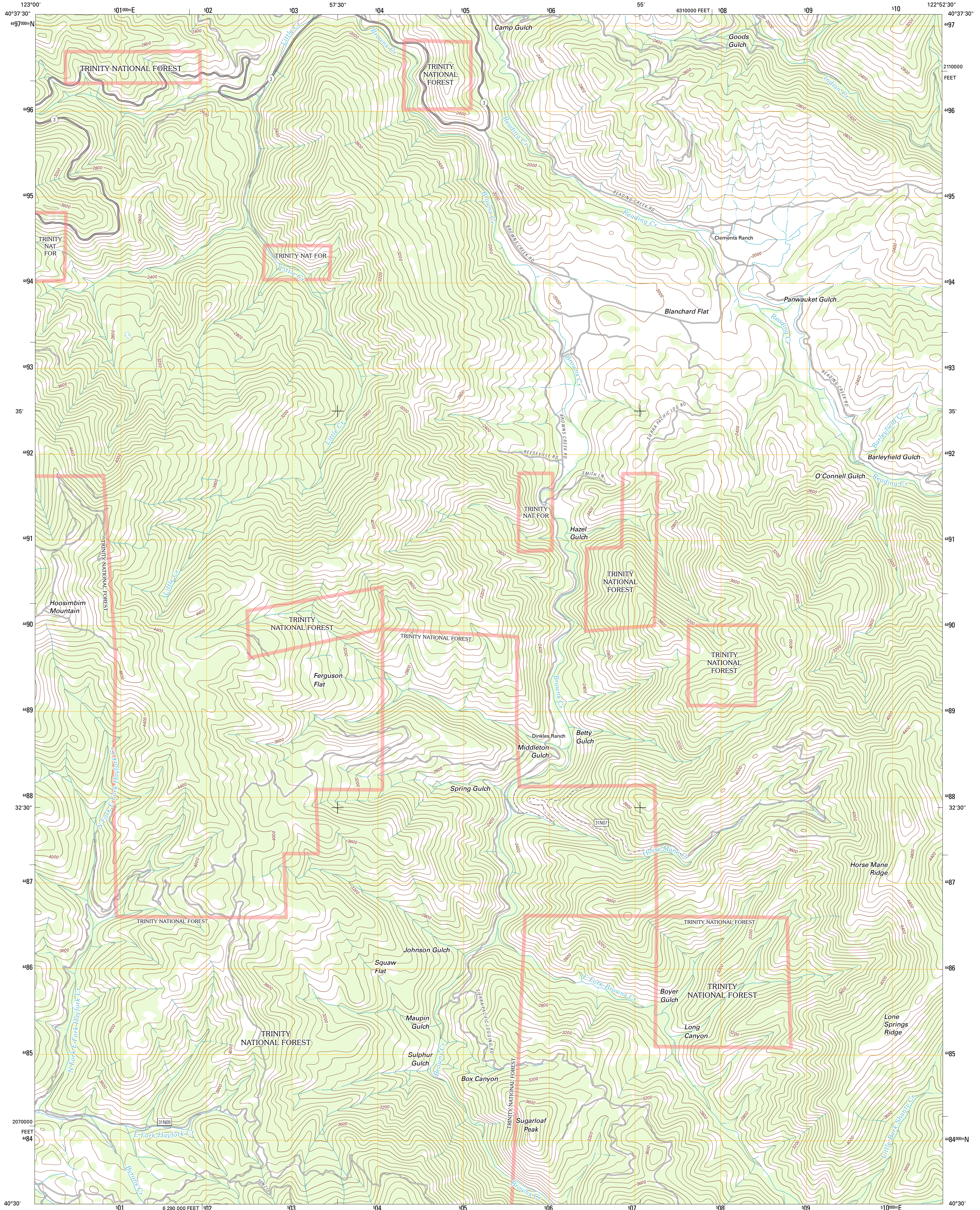




U.S. DEPARTMENT OF THE INTERIOR  
U. S. GEOLOGICAL SURVEY

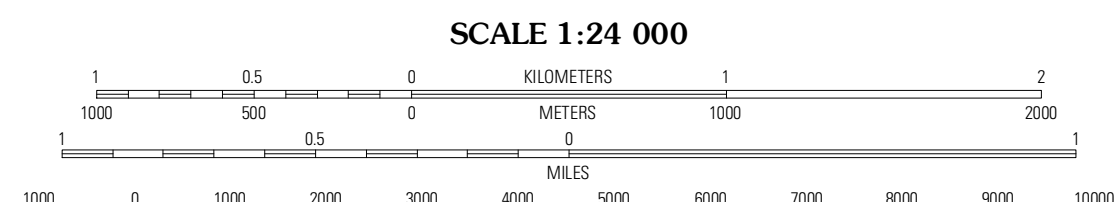
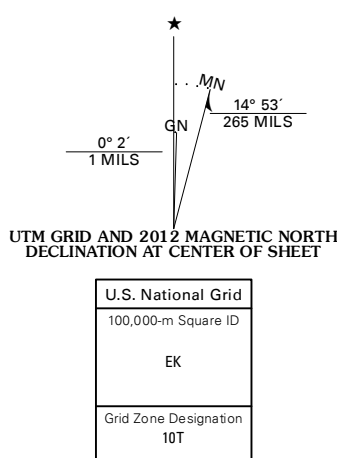


HOOSIMBIM MOUNTAIN QUADRANGLE  
CALIFORNIA-TRINITY CO.  
7.5-MINUTE SERIES



Produced by the United States Geological Survey  
North American Datum of 1983 (NAD83)  
World Geodetic System of 1984 (WGS84). Projection and  
1 000-meter grid. Universal Transverse Mercator, Zone 10T  
10 000-foot ticks. California Coordinate System of 1983  
(zone 1)

Imagery:.....NAIP, July 2010  
Roads:.....©2006-2011 TomTom  
Roads within US Forest Service Lands  
with limited Forest Service updates, 2009  
Names:.....GNIS, 2011  
Hydrography:.....National Hydrography Dataset, 2010  
Contours:.....National Elevation Dataset, 2000  
Boundaries:.....Census, IBWC, IBC, USGS, 1972 - 2010



CONTOUR INTERVAL 80 FEET  
NORTH AMERICAN VERTICAL DATUM OF 1988

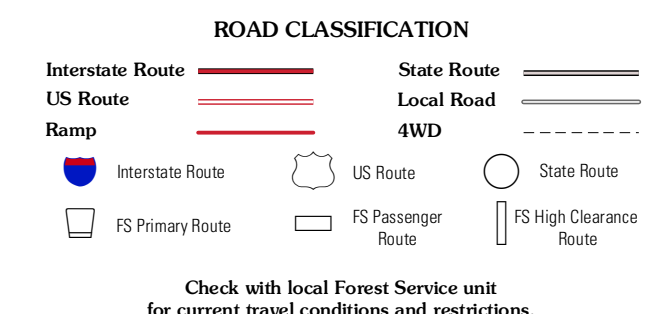
This map was produced to conform with the  
National Geospatial Program US Topo Product Standard, 2011.  
A metadata file associated with this product is draft version 0.6.1



QUADRANGLE LOCATION

Junction City	Weaverville	Lewiston
Hayfork Summit	Hoosimbim Mountain	Bully Chooz Mountain
Wildwood	Chancheville Peak	Arbuckle Mountain

ADJOINING 7.5' QUADRANGLES



HOOSIMBIM MOUNTAIN, CA  
2012