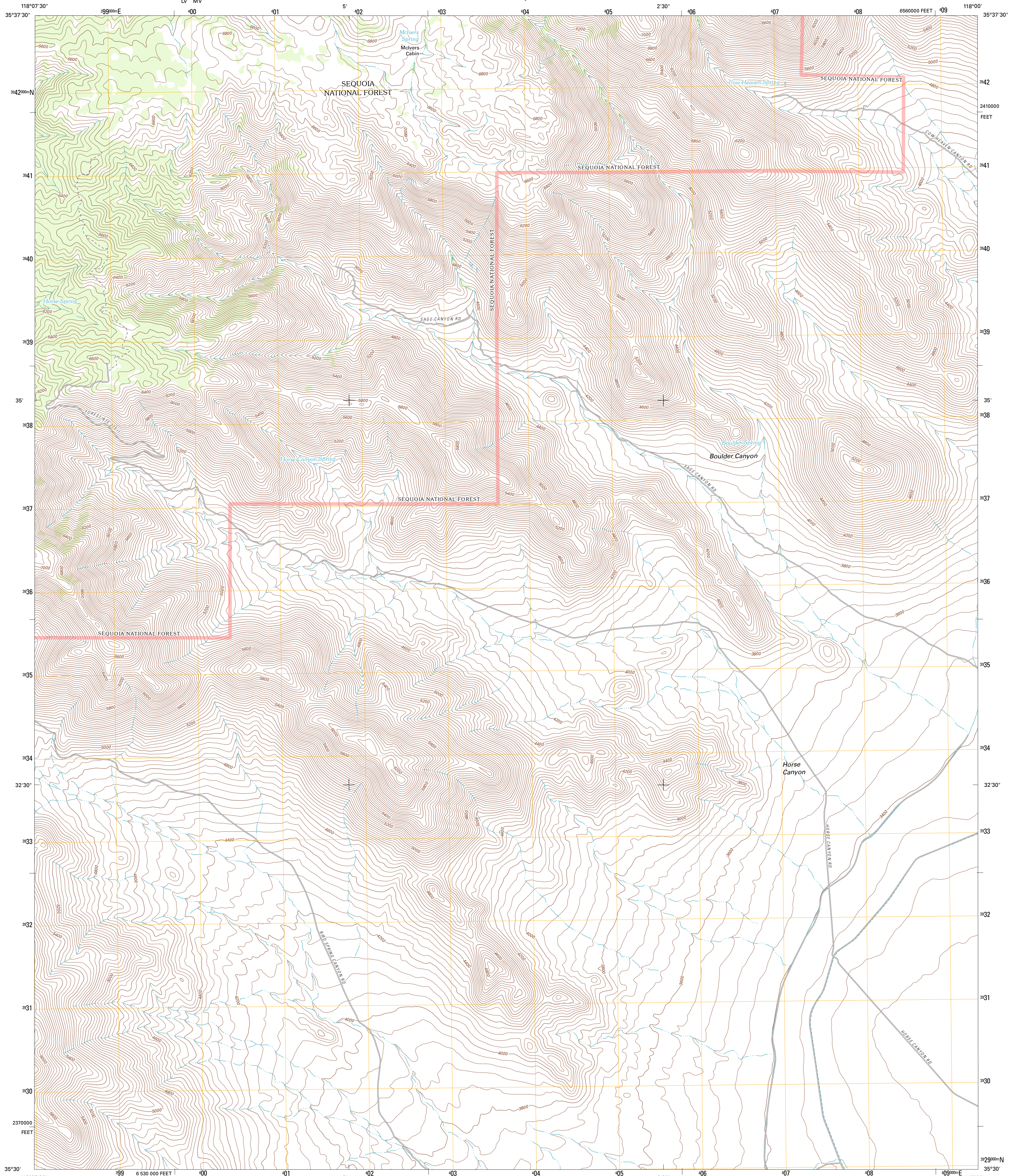




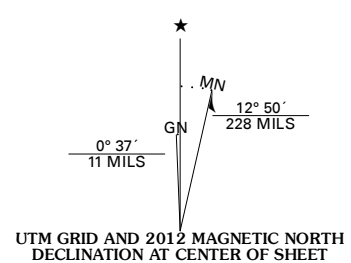
U.S. DEPARTMENT OF THE INTERIOR
U. S. GEOLOGICAL SURVEY



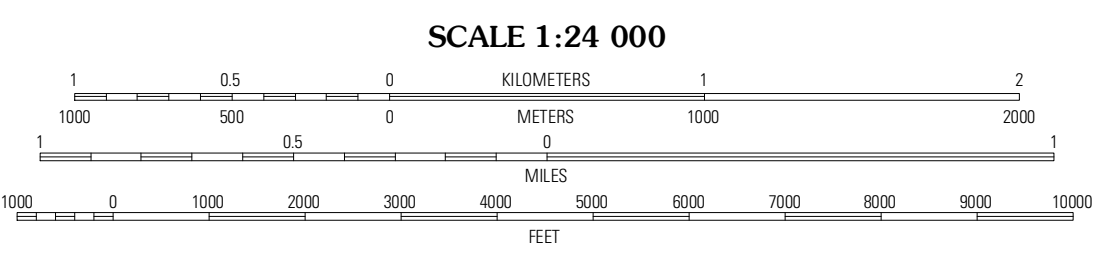
HORSE CANYON QUADRANGLE
CALIFORNIA-KERN CO.
7.5-MINUTE SERIES



Produced by the United States Geological Survey
North American Datum of 1983 (NAD83)
World Geodetic System of 1984 (WGS84). Projection and
1 000-meter grid: Universal Transverse Mercator, Zone 11S
10 000-foot ticks: California Coordinate System of 1983
(zone 5)



U.S. National Grid
100,000-m Square ID
10
LV MV
Grid Zone Designation
11S



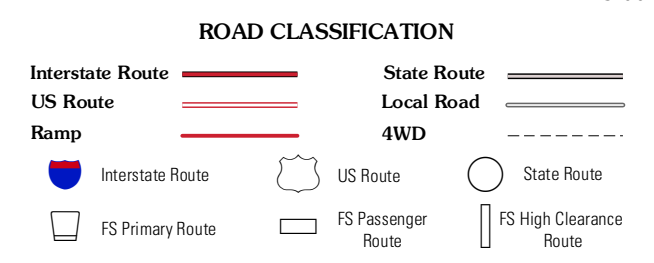
CONTOUR INTERVAL 40 FEET
NORTH AMERICAN VERTICAL DATUM OF 1988

This map was produced to conform with the
National Geospatial Program US Topo Product Standard, 2011.
A metadata file associated with this product is draft version 0.6.1



QUADRANGLE LOCATION

Owens	Walker Pass	Owens Peak
Cane Canyon	Horse Canyon	Freeman Junction
Pinon Mountain	Dove Spring	Saltdale NW



Check with local Forest Service unit
for current travel conditions and restrictions.

HORSE CANYON, CA
2012

ADJOINING 7.5' QUADRANGLES