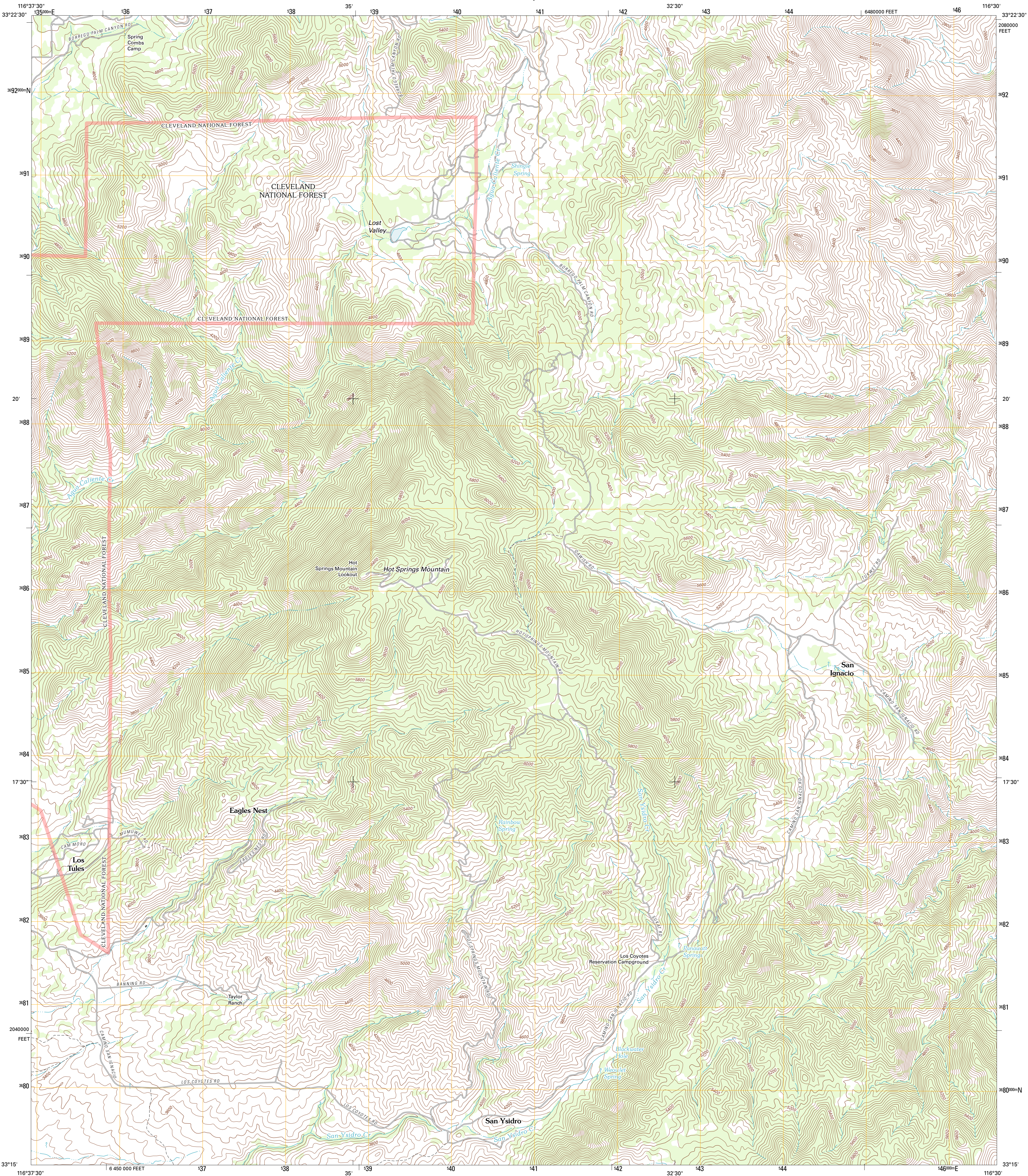




U.S. DEPARTMENT OF THE INTERIOR
U. S. GEOLOGICAL SURVEY

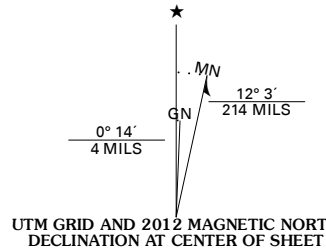


HOT SPRINGS MOUNTAIN QUADRANGLE
CALIFORNIA-SAN DIEGO CO.
7.5-MINUTE SERIES

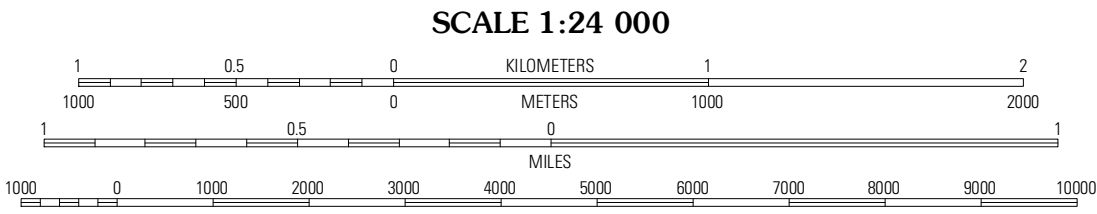


Produced by the United States Geological Survey
North American Datum of 1983 (NAD83)
World Geodetic System of 1984 (WGS84) Projection and
1000-meter grid: Universal Transverse Mercator, Zone 11S
10 000-foot ticks: California Coordinate System of 1983
(zone 6)

Imagery.....NAP, May 2010
Roads.....©2006-2011 TomTom
Roads within US Forest Service Lands.....FS Topo Data
with limited Forest Service updates, 2009
Names.....GNIS, 2011
Hydrography.....National Hydrography Dataset, 2010
Contours.....National Elevation Dataset, 2006
Boundaries.....Census, IBWC, IBC, USGS, 1972 - 2010



| |
|-----------------------|
| U.S. National Grid |
| 100,000m Square ID |
| NS |
| Grid Zone Designation |
| 11S |



CONTOUR INTERVAL 40 FEET
NORTH AMERICAN VERTICAL DATUM OF 1988
This map was produced to conform with the
National Geospatial Program US Topo Product Standard, 2011.
A metadata file associated with this product is draft version 0.6.1



| | | |
|-----------------|----------------------|---------------------|
| Beauty Mountain | Buckshot Mountain | Collins Valley |
| Warner Springs | Hot Springs Mountain | Borrego Palm Canyon |
| Warner Ranch | Ranchita | Tubb Canyon |

ROAD CLASSIFICATION

| | |
|------------------|-------------|
| Interstate Route | State Route |
| US Route | Local Road |
| Ramp | 4WD |

Interstate Route: US Route: State Route: Local Road: 4WD:

FS Primary Route: FS Passenger Route: FS High Clearance Route:

Check with local Forest Service unit for current travel conditions and restrictions.

HOT SPRINGS MOUNTAIN, CA
2012