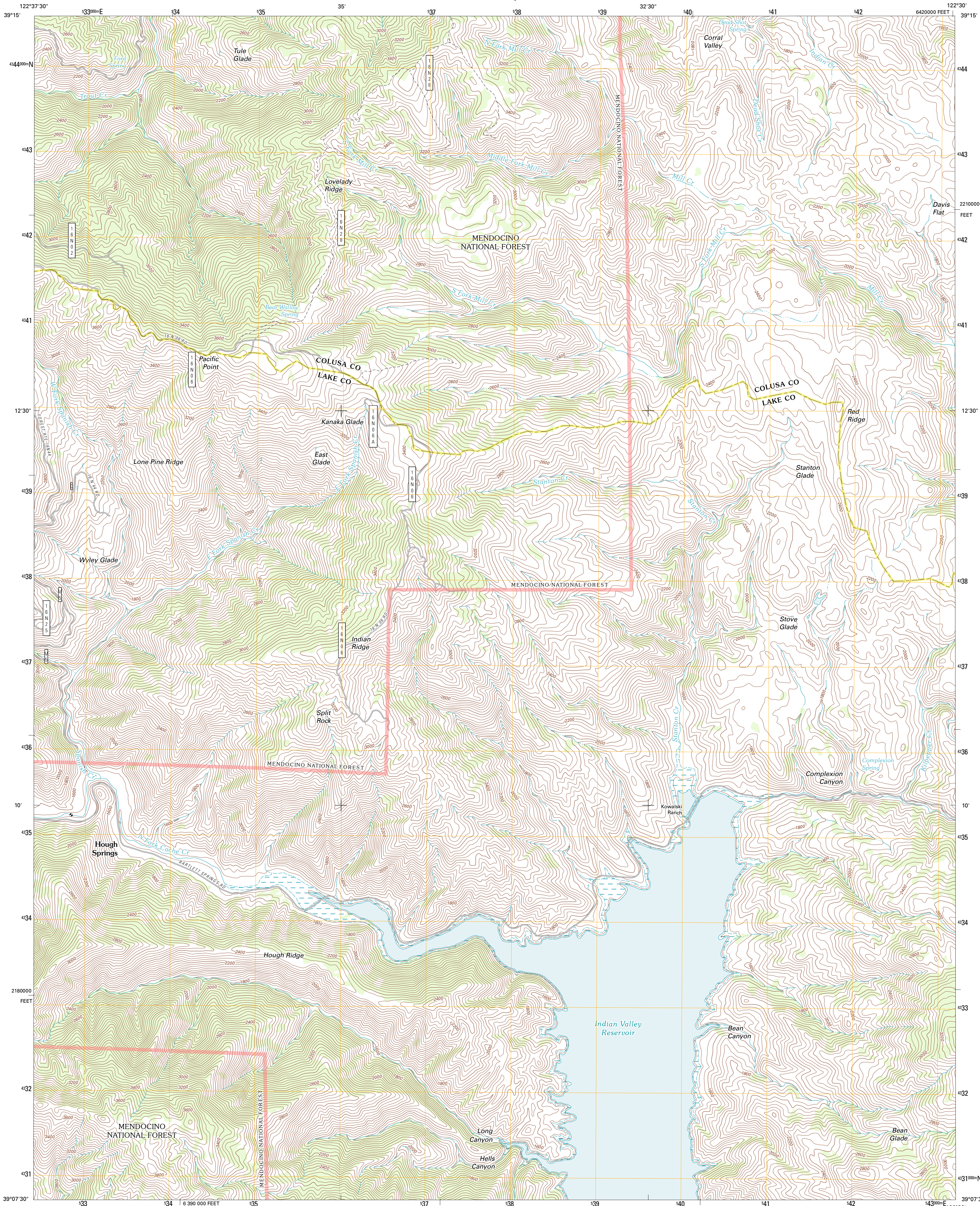




U.S. DEPARTMENT OF THE INTERIOR
U. S. GEOLOGICAL SURVEY

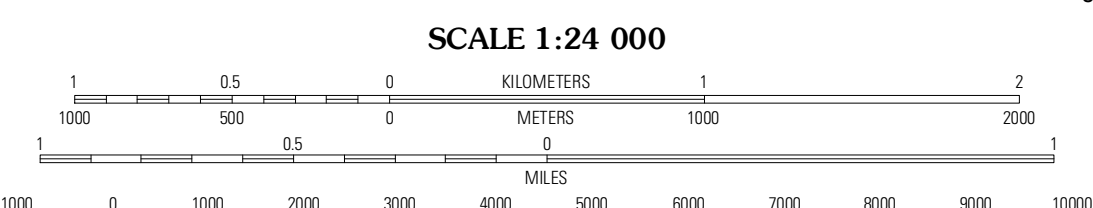
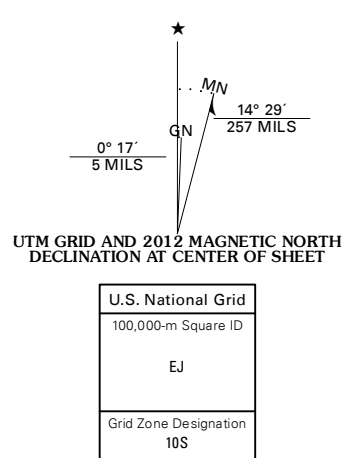


HOUGH SPRINGS QUADRANGLE
CALIFORNIA
7.5-MINUTE SERIES



Produced by the United States Geological Survey
North American Datum of 1983 (NAD83)
World Geodetic System of 1984 (WGS84). Projection and
1 000-meter grid: Universal Transverse Mercator, Zone 10S
10 000-foot ticks: California Coordinate System of 1983
(zone 2)

Imagery:.....NAIP, June 2010 - July 2010
Roads:.....©2006-2011 TomTom
Roads within US Forest Service Lands:.....FS Topo Data
with Limited Forest Service updates, 2009
Names:.....GNIS, 2011
Hydrography:.....National Hydrography Dataset, 2010
Contours:.....National Elevation Dataset, 2001
Boundaries:.....Census, IBWC, IBC, USGS, 1972 - 2010



CONTOUR INTERVAL 40 FEET
NORTH AMERICAN VERTICAL DATUM OF 1988

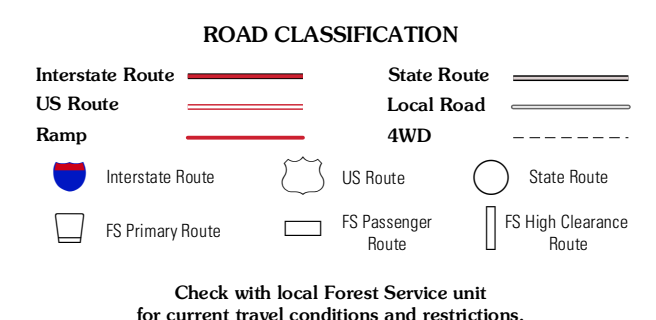
This map was produced to conform with the
National Geospatial Program US Topo Product Standard, 2011.
A metadata file associated with this product is draft version 0.6.1



QUADRANGLE LOCATION

| | | |
|------------------|----------------|----------------|
| Footh Springs | Gilmore Peak | Lodgepole |
| Bartlett Springs | Hough Springs | Leesville |
| Clearlake Oaks | Benmore Canyon | Wilbur Springs |

ADJOINING 7.5' QUADRANGLES



Check with local Forest Service unit for current travel conditions and restrictions.

HOUGH SPRINGS, CA
2012