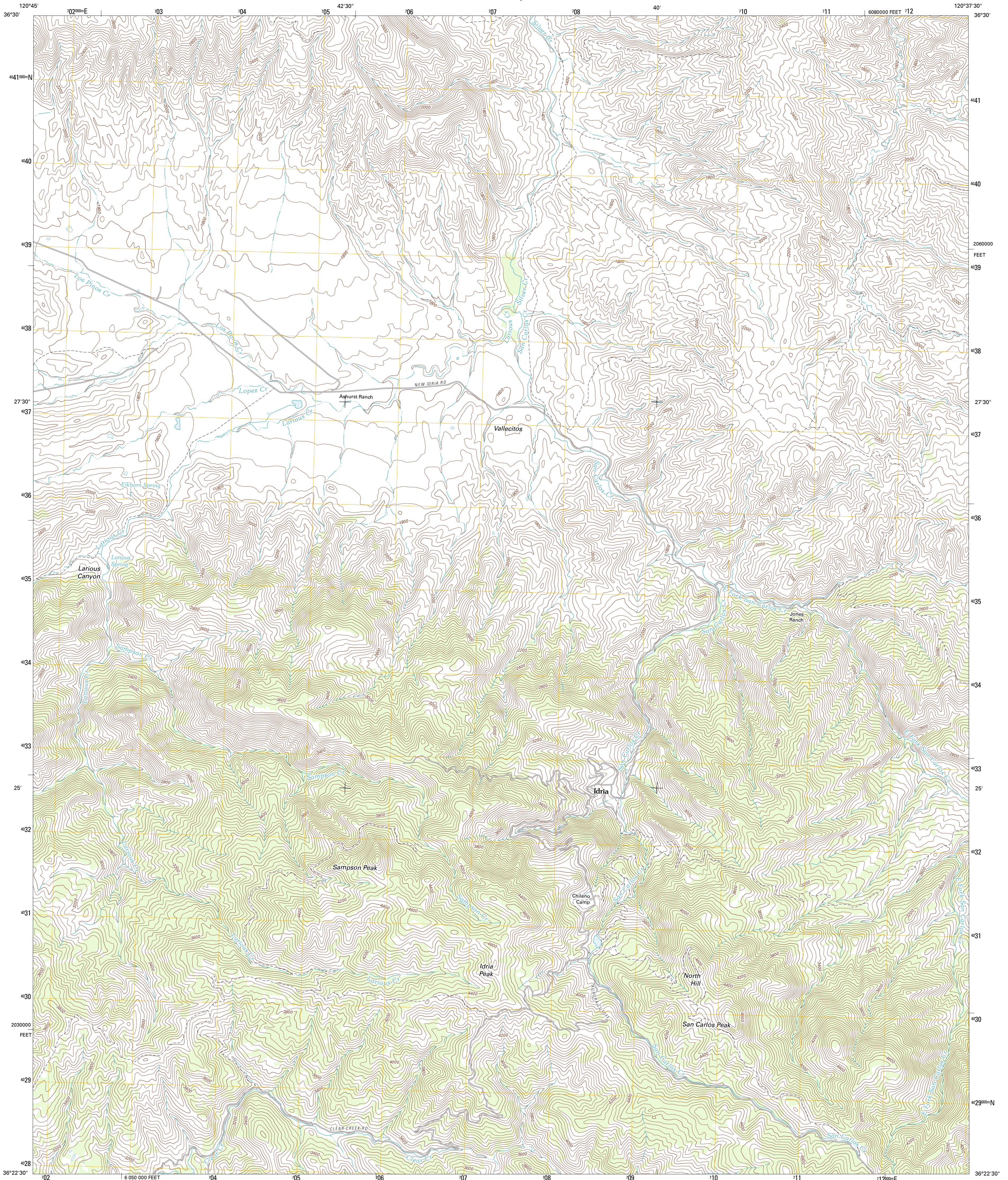




U.S. DEPARTMENT OF THE INTERIOR  
U. S. GEOLOGICAL SURVEY

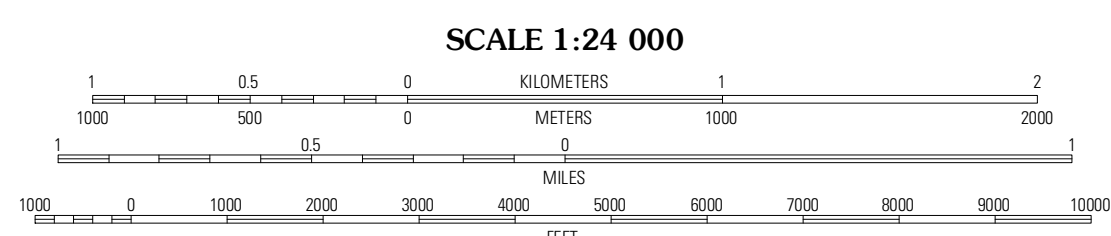
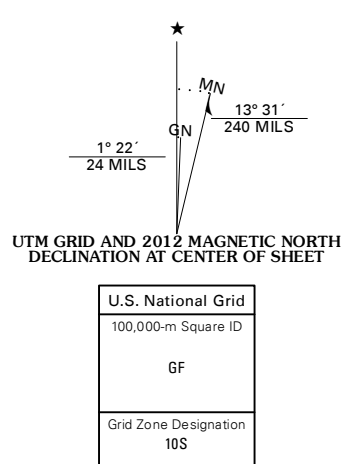


IDRIA QUADRANGLE  
CALIFORNIA-SAN BENITO CO.  
7.5-MINUTE SERIES



Produced by the United States Geological Survey  
North American Datum of 1983 (NAD83)  
World Geodetic System of 1984 (WGS84). Projection and  
1 000-meter grid: Universal Transverse Mercator, Zone 10S  
10 000-foot ticks: California Coordinate System of 1983  
(zone 4)

Imagery: N.A.I.P., May 2010  
Roads: ©2006-2011 TomTom  
Names: National Geospatial Information System, 2011  
Hydrography: National Hydrography Dataset, 2010  
Contours: National Elevation Dataset, 2008  
Boundaries: Census, IBWC, IBC, USGS, 1972 - 2010



CONTOUR INTERVAL 40 FEET  
NORTH AMERICAN VERTICAL DATUM OF 1988

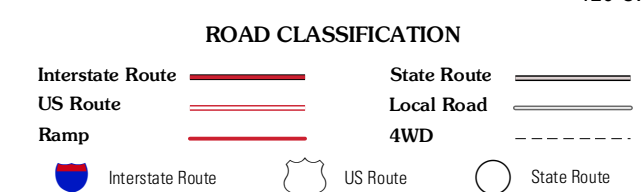
This map was produced to conform with the  
National Geospatial Program US Topo Product Standard, 2011.  
A metadata file associated with this product is draft version 0.6.1



QUADRANGLE LOCATION

Panoche	Tunney Hills	Monocline Ridge
Hernandez Reservoir	Idria	Cerro Mountain
Hepesdam Peak	San Benito Mountain	Santa Rita Peak

ADJOINING 7.5 QUADRANGLES



IDRIA, CA  
2012