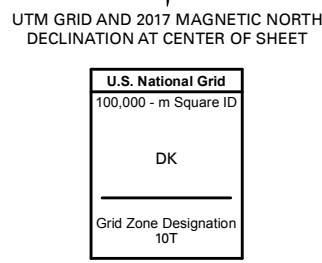
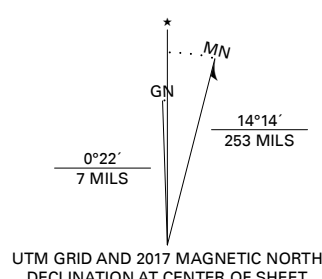


Produced by the United States Geological Survey

North American Datum of 1983 (NAD83)
World Geodetic System of 1984 (WGS84). Projection and
1 000-meter grid/Universal Transverse Mercator, Zone 10T105
This map is not a legal document. Boundaries may be
generalized for this map scale. Private lands within government
reservations may not be shown. Obtain permission before
entering private lands.

Imagery.....NAIP, May 2016 - October 2016
Roads.....U.S. Census Bureau, 2016
Names.....GNIS, 1981 - 2016
Hydrography.....National Hydrography Dataset, 2003 - 2017
Contours.....National Elevation Dataset, 1999
Boundaries.....Multiple sources; see metadata file, 2016 - 2017
Public Land Survey System.....BLM, 2018
Wetlands.....FWS National Wetlands Inventory, Not Available



CONTOUR INTERVAL 40 FEET
NORTH AMERICAN VERTICAL DATUM OF 1988
This map was produced to conform with the
National Geospatial Program US Topo Product Standard, 2011.
A metadata file associated with this product is draft version 0.6.18



QUADRANGLE LOCATION

1	2	3
4	5	6
7	8	

ADJOINING QUADRANGLES

- 1 Fort Seward
- 2 Alderpoint
- 3 Zenia
- 4 Harris
- 5 Lake Mountain
- 6 Noble Butte
- 7 Bell Springs
- 8 Updegraff Ridge

