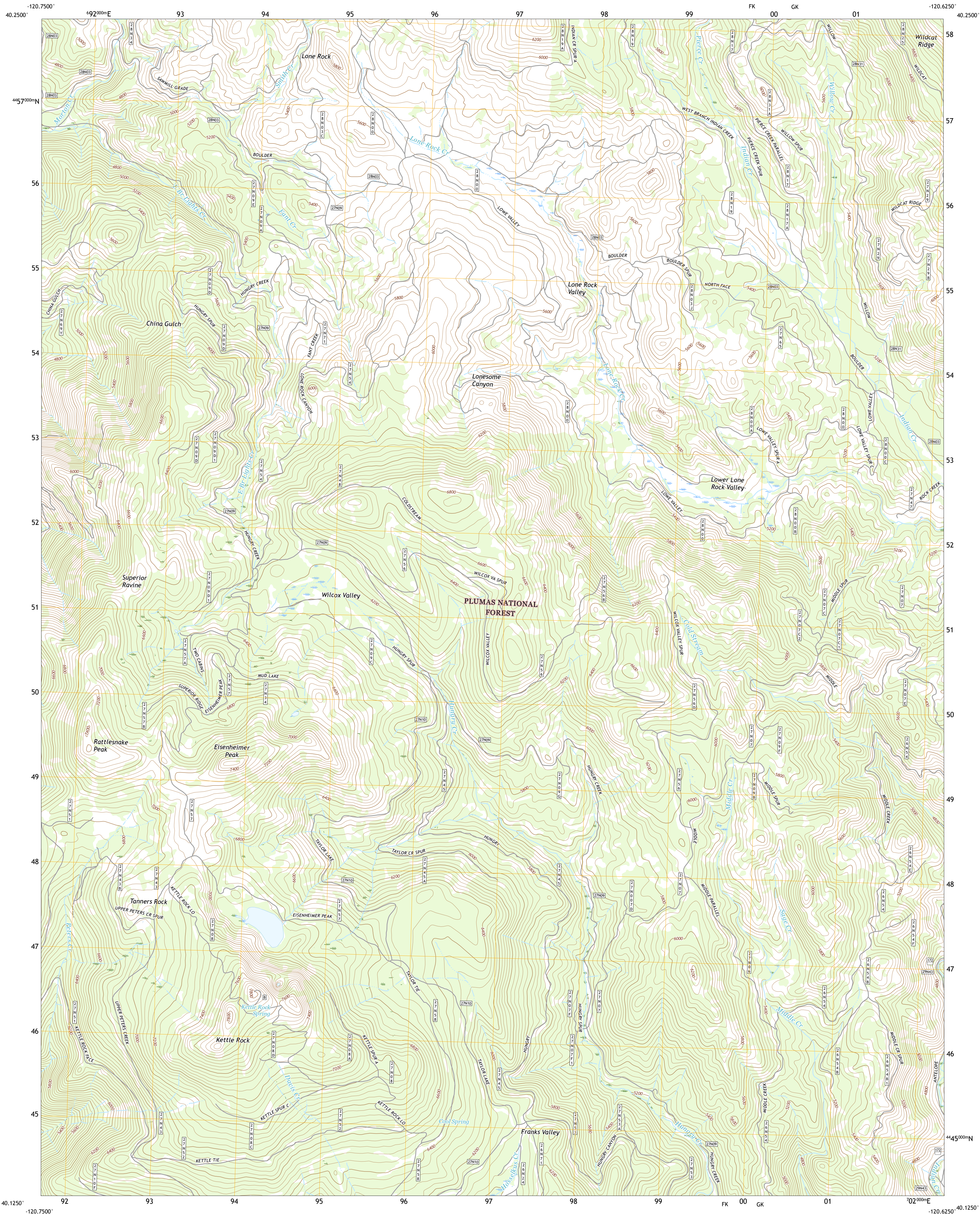




U.S. DEPARTMENT OF THE INTERIOR
U.S. GEOLOGICAL SURVEY



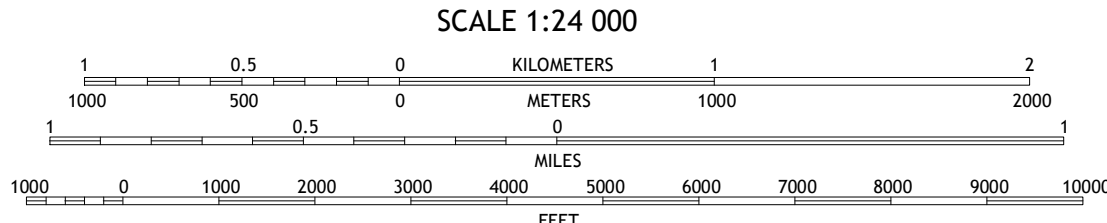
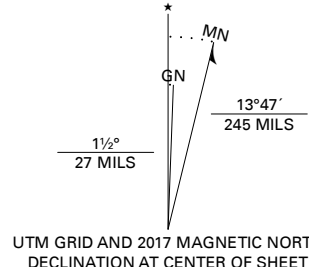
KETTLE ROCK QUADRANGLE
CALIFORNIA - PLUMAS COUNTY
7.5-MINUTE SERIES



Produced by the United States Geological Survey

North American Datum of 1983 (NAD83)
World Geodetic System of 1984 (WGS84). Projection and
1 000-meter grid: Universal Transverse Mercator, Zone 10T
This map is not a legal document. Boundaries may be
generalized for this map scale. Private lands within government
reservations may not be shown. Obtain permission before
entering private lands.

Imagery.....NAIP, July 2016 - October 2016
Roads.....U.S. Census Bureau, 2018
Data within US Forest Service Lands.....FSTopo
with limited Forest Service updates, 2018
Names.....GNS, 1981
Hydrography.....National Hydrography Dataset, 2003 - 2018
Contours.....National Elevation Dataset, 1999
Boundaries.....Multiple sources: see metadata file 2016
Public Land Survey System.....BLM, 2018
Wetlands.....FWS National Wetlands Inventory, 1981



1	2	3
4	5	6
7	8	9

1 Fredonier Pass
2 Diamond Mountain
3 Janesville
4 Moonlight Peak
5 Antelope Lake
6 Taylorville
7 Genesee Valley
8 Babcock Peak

ROAD CLASSIFICATION	
Expressway	Local Connector
Secondary Hwy	Local Road
Ramp	4WD
Interstate Route	US Route
FS Primary Route	FS Passenger Route
	FS High Clearance Route
	State Route

Check with local Forest Service unit
for current travel conditions and restrictions.

KETTLE ROCK, CA
2018

