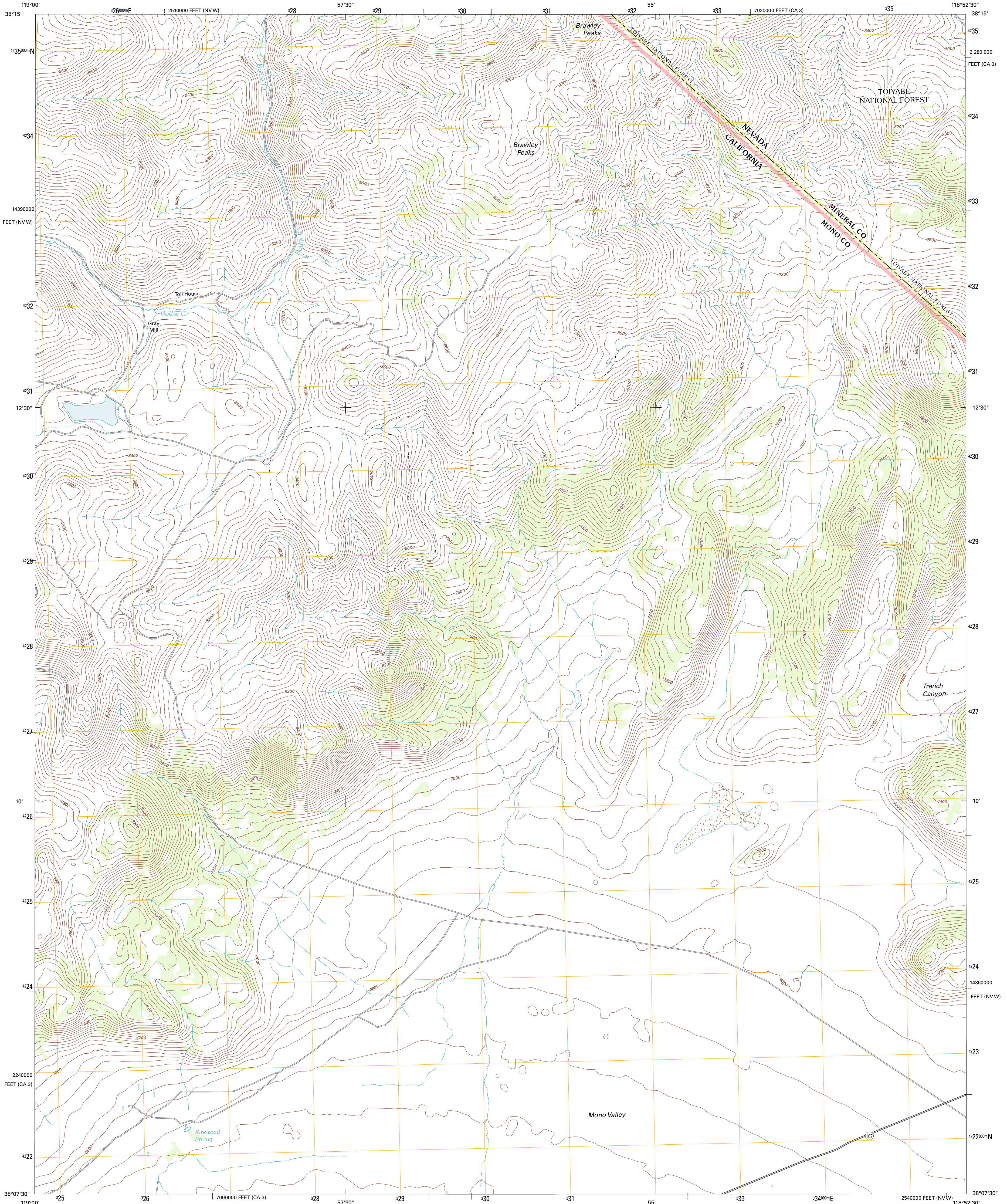




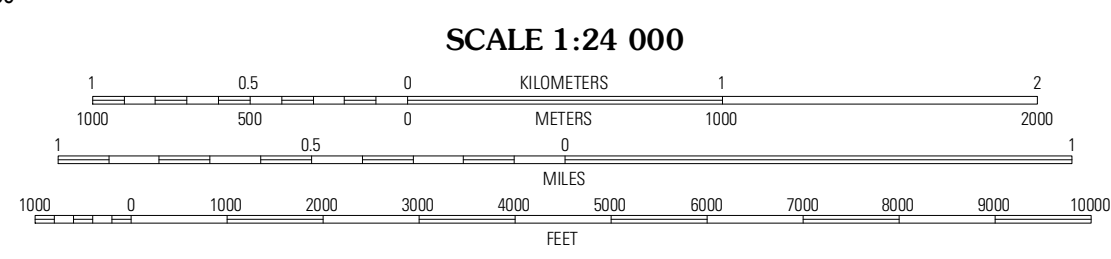
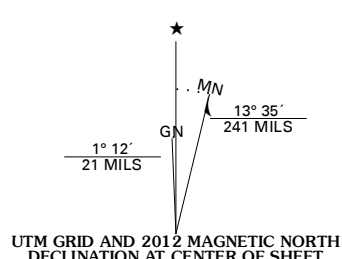
U.S. DEPARTMENT OF THE INTERIOR  
U. S. GEOLOGICAL SURVEY



KIRKWOOD SPRING QUADRANGLE  
CALIFORNIA-NEVADA  
7.5-MINUTE SERIES



Produced by the United States Geological Survey  
North American Datum of 1983 (NAD83)  
World Geodetic System of 1984 (WGS84). Projection and  
1 000-meter grid: Universal Transverse Mercator, Zone 11S  
10 000-foot ticks: California Coordinate System of 1983  
(zone 3), Nevada Coordinate System of 1983 (west zone)



CONTOUR INTERVAL 40 FEET  
NORTH AMERICAN VERTICAL DATUM OF 1988

This map was produced to conform with the  
National Geospatial Program US Topo Product Standard, 2011.  
A metadata file associated with this product is draft version 0.6.1



QUADRANGLE LOCATION

Dome Hill	Aurora	Mount Hicks
Bodie	Kirkwood Spring	Cedar Hill
Night Island	Sulphur Pond	Alameda Well

ADJOINING 7.5 QUADRANGLES

**ROAD CLASSIFICATION**

	Interstate Route		State Route
	US Route		Local Road
	Ramp		4WD
	FS Primary Route		FS Passenger Route
	FS High Clearance Route		State Route
			FS High Clearance Route

Check with local Forest Service unit  
for current travel conditions and restrictions.

KIRKWOOD SPRING, CA-NV  
2012

Imagery:.....NAIP, June 2010 - August 2010  
Roads:.....©2006-2011 TomTom  
Roads within US Forest Service Lands:.....FS Topo Data  
with limited Forest Service updates, 2009  
Names:.....GNIS, 2011  
Hydrography:.....National Hydrography Dataset, 2010  
Contours:.....National Elevation Dataset, 2001  
Boundaries:.....Census, IBWC, IBC, USGS, 1972 - 2010