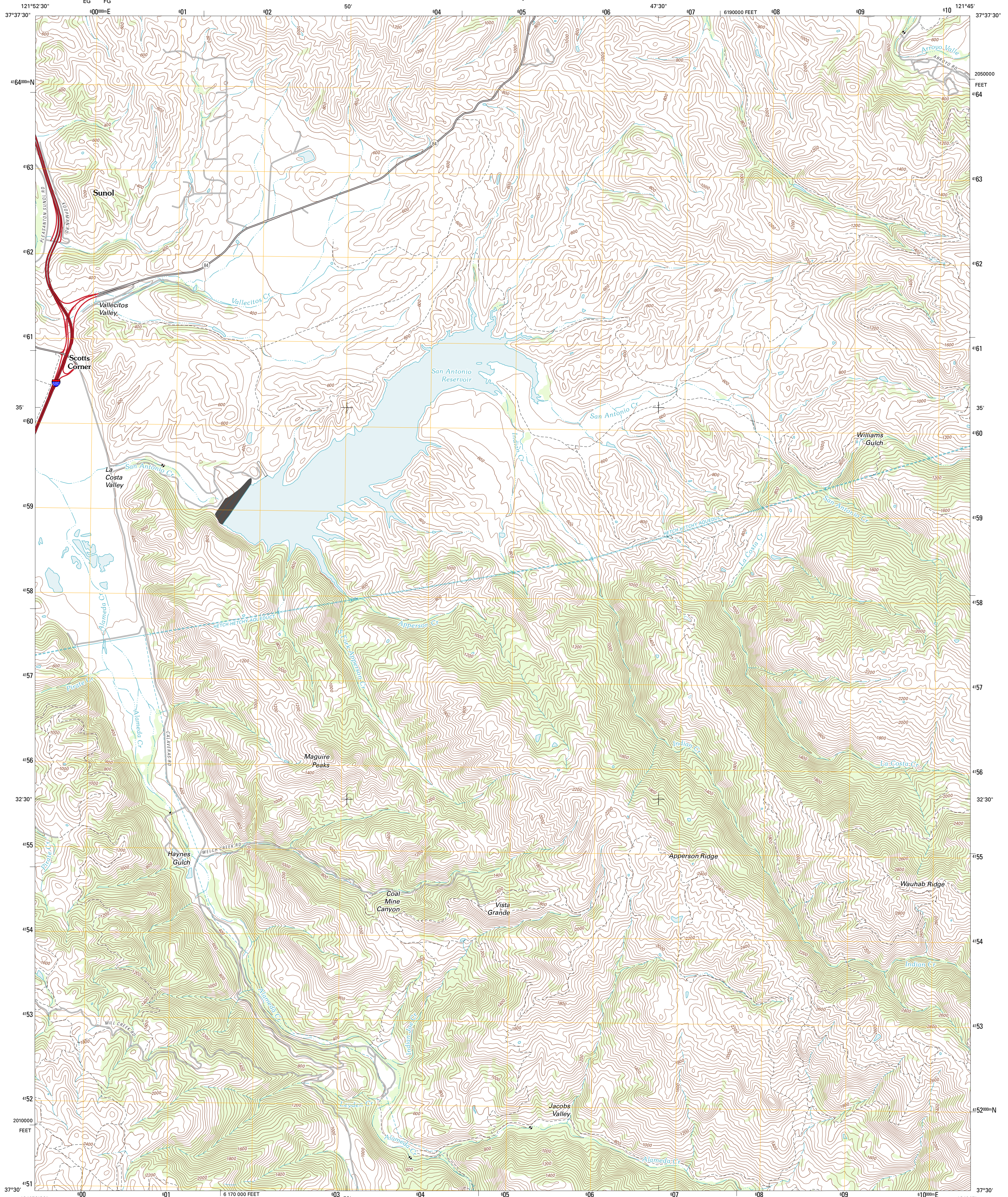




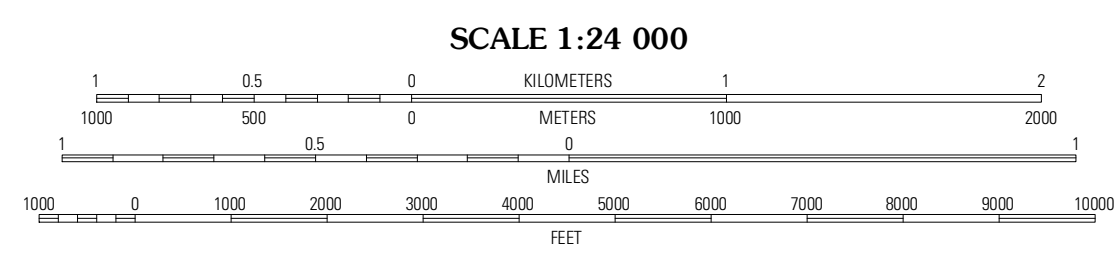
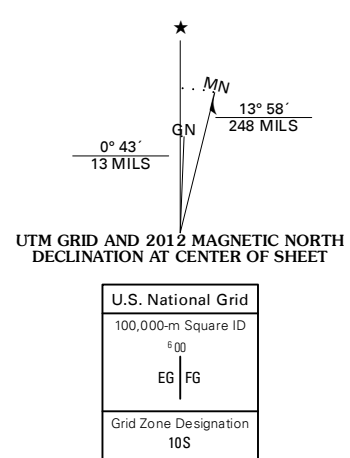
U.S. DEPARTMENT OF THE INTERIOR
U. S. GEOLOGICAL SURVEY



LA COSTA VALLEY QUADRANGLE
CALIFORNIA-ALAMEDA CO.
7.5-MINUTE SERIES



Produced by the United States Geological Survey
North American Datum of 1983 (NAD83)
World Geodetic System of 1984 (WGS84). Projection and
1 000-meter grid: Universal Transverse Mercator, Zone 10S
10 000-foot ticks: California Coordinate System of 1983
(zone 3)



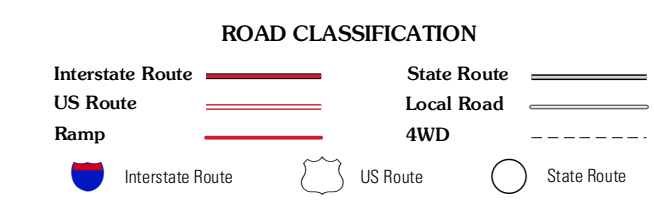
CONTOUR INTERVAL 40 FEET
NORTH AMERICAN VERTICAL DATUM OF 1988

This map was produced to conform with the
National Geospatial Program US Topo Product Standard, 2011.
A metadata file associated with this product is draft version 0.6.1



QUADRANGLE LOCATION

Dublin	Livermore	Altamont
Niles	La Costa Valley	Mendocino Springs
Milpitas	Calaveras Reservoir	Mount Day



LA COSTA VALLEY, CA
2012

ADJOINING 7.5 QUADRANGLES