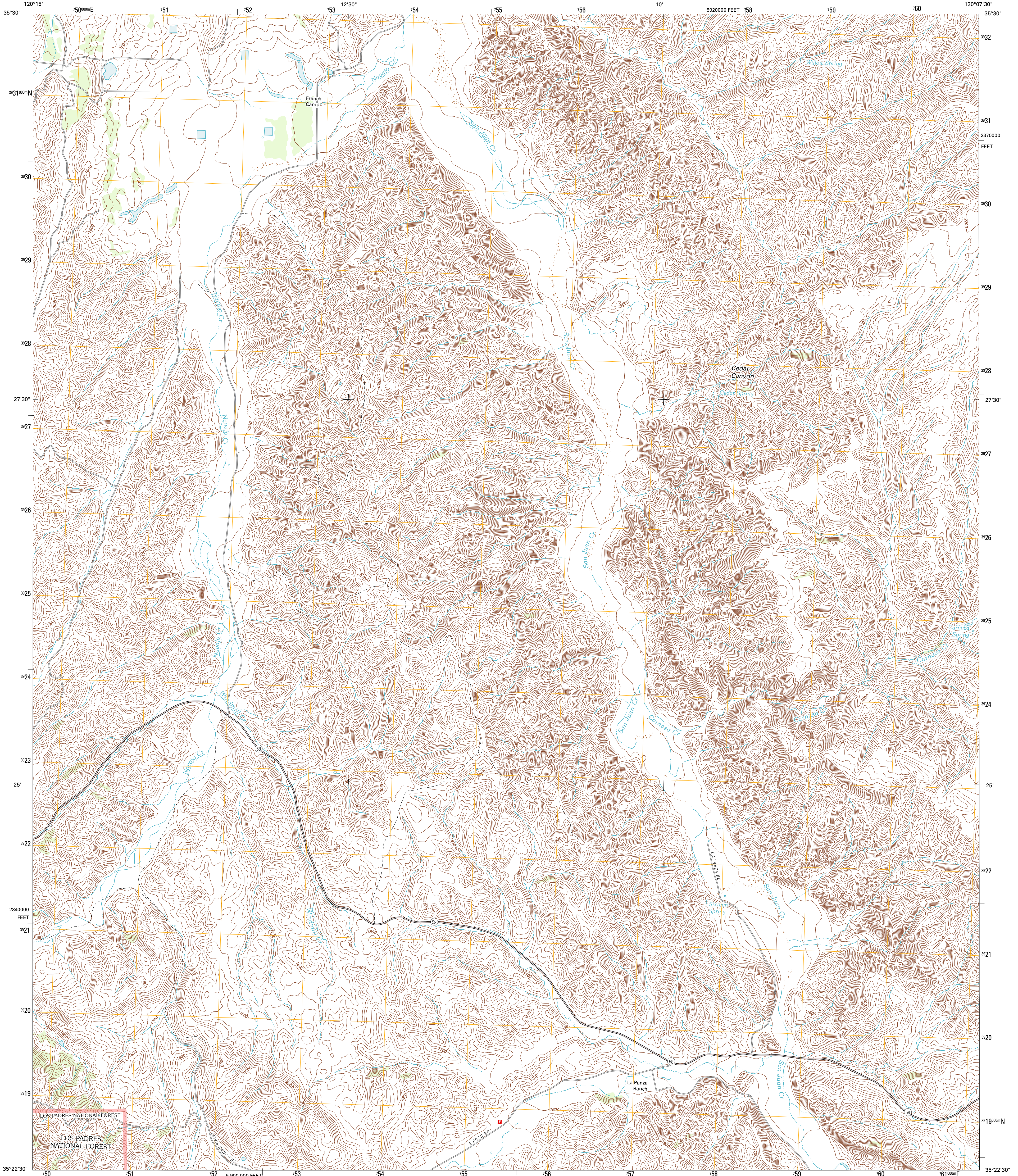




U.S. DEPARTMENT OF THE INTERIOR  
U. S. GEOLOGICAL SURVEY



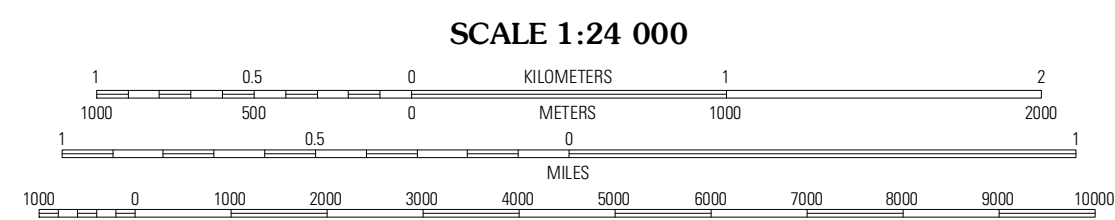
LA PANZA RANCH QUADRANGLE  
CALIFORNIA-SAN LUIS OBISPO CO.  
7.5-MINUTE SERIES



Produced by the United States Geological Survey  
North American Datum of 1983 (NAD83)  
World Geodetic System of 1984 (WGS84) Projection and  
1 000-meter grid; Universal Transverse Mercator, Zone 10S  
10 000-foot ticks; California Coordinate System of 1983  
(zone 5)

UTM GRID AND 2012 MAGNETIC NORTH  
DECLINATION AT CENTER OF SHEET

U.S. National Grid  
100,000-m Square ID  
GE  
Grid Zone Designation  
10S



CONTOUR INTERVAL 20 FEET  
NORTH AMERICAN VERTICAL DATUM OF 1988

This map was produced to conform with the  
National Geospatial Program US Topo Product Standard, 2011.  
A metadata file associated with this product is draft version 0.6.1



QUADRANGLE LOCATION

Camatta Canyon	Holland Canyon	Packwood Creek
Camatta Ranch	La Panza Ranch	La Panza NE
Pozo Summit	La Panza	California Valley

ADJOINING 7.5 QUADRANGLES

ROAD CLASSIFICATION

Interstate Route  
US Route  
Ramp  
FS Primary Route

State Route  
Local Road  
4WD  
US Route  
FS Passenger Route  
FS High Clearance Route  
State Route

Check with local Forest Service unit  
for current travel conditions and restrictions.

LA PANZA RANCH, CA  
2012

Imagery:.....NAIP, May 2010 - June 2010  
Roads:.....02/2006-2011 Team Team  
Roads within US Forest Service Lands:.....FSTopo Data  
with limited Forest Service updates, 2009  
Names:.....GNIS, 2011  
Hydrography:.....National Hydrography Dataset, 2010  
Contours:.....National Elevation Dataset, 2005  
Boundaries:.....Census, IBWC, IBC, USGS, 1972 - 2010