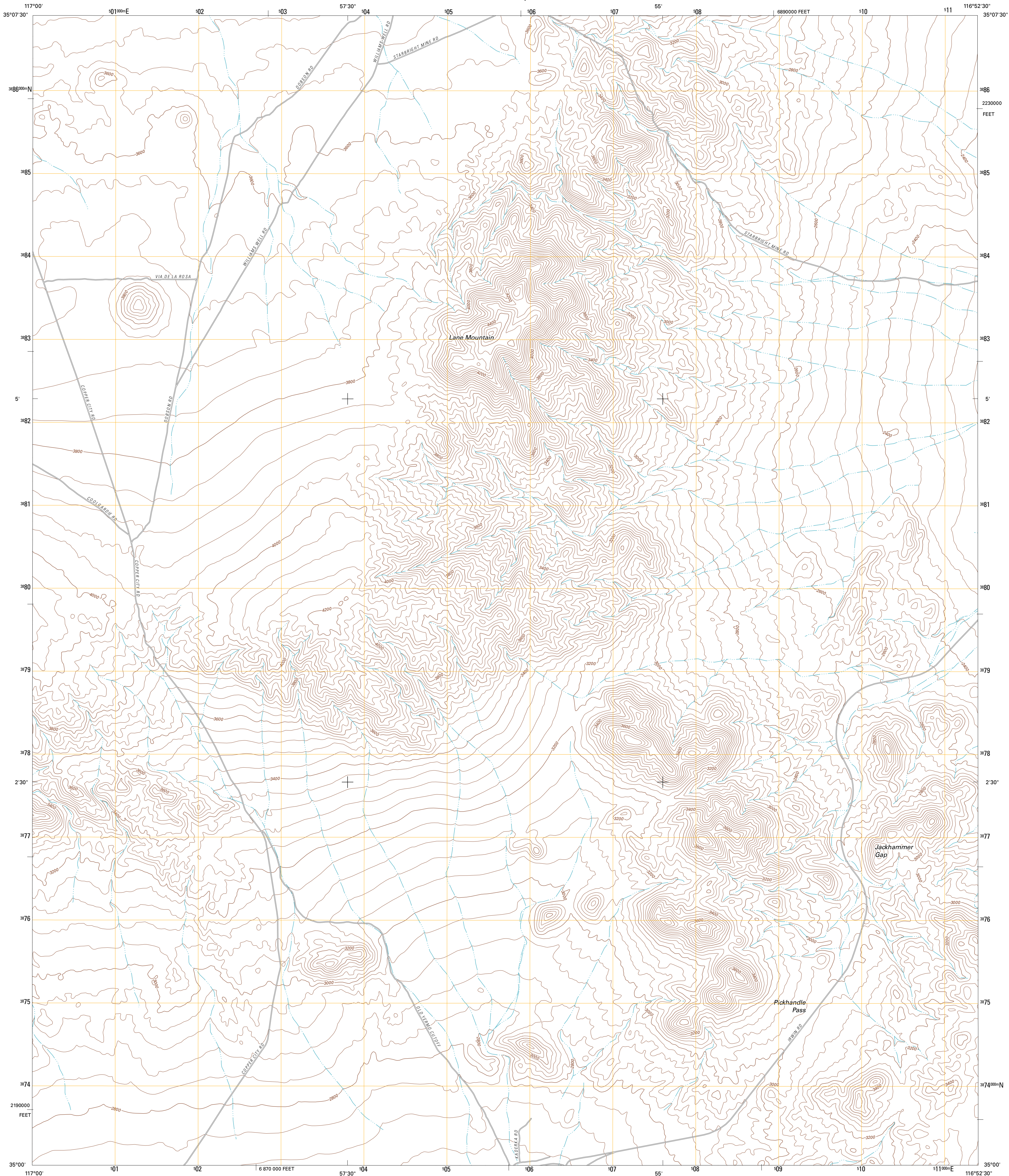




U.S. DEPARTMENT OF THE INTERIOR
U. S. GEOLOGICAL SURVEY



LANE MOUNTAIN QUADRANGLE
CALIFORNIA-SAN BERNARDINO CO.
7.5-MINUTE SERIES

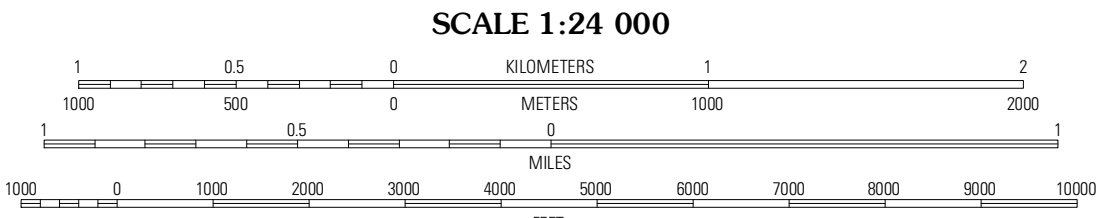


Produced by the United States Geological Survey
North American Datum of 1983 (NAD83)
World Geodetic System of 1984 (WGS84). Projection and
1 000-meter grid: Universal Transverse Mercator, Zone 11S
10 000-foot ticks: California Coordinate System of 1983
(zone 5)

Imagery.....NAIP, April 2010 - May 2010
Roads.....©2006-2011 TomTom
Names.....GNIS, 2011
Hydrography.....National Hydrography Dataset, 2010
Contours.....National Elevation Dataset, 2005
Boundaries.....Census, IBWC, IBC, USGS, 1972 - 2010

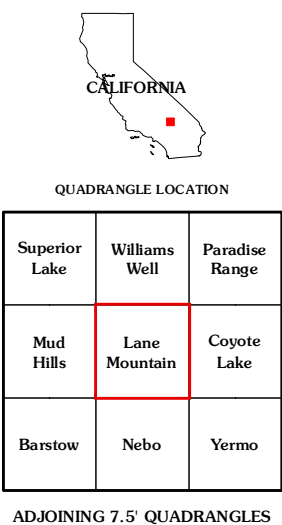
UTM GRID AND 2012 MAGNETIC NORTH
DECLINATION AT CENTER OF SHEET

U.S. National Grid
100,000-m Square ID
NU
Grid Zone Designation
11S



CONTOUR INTERVAL 40 FEET
NORTH AMERICAN VERTICAL DATUM OF 1988

This map was produced to conform with the
National Geospatial Program US Topo Product Standard, 2011.
A metadata file associated with this product is draft version 0.6.1



ROAD CLASSIFICATION

Interstate Route
US Route
Ramp

State Route
Local Road
4WD

LANE MOUNTAIN, CA
2012