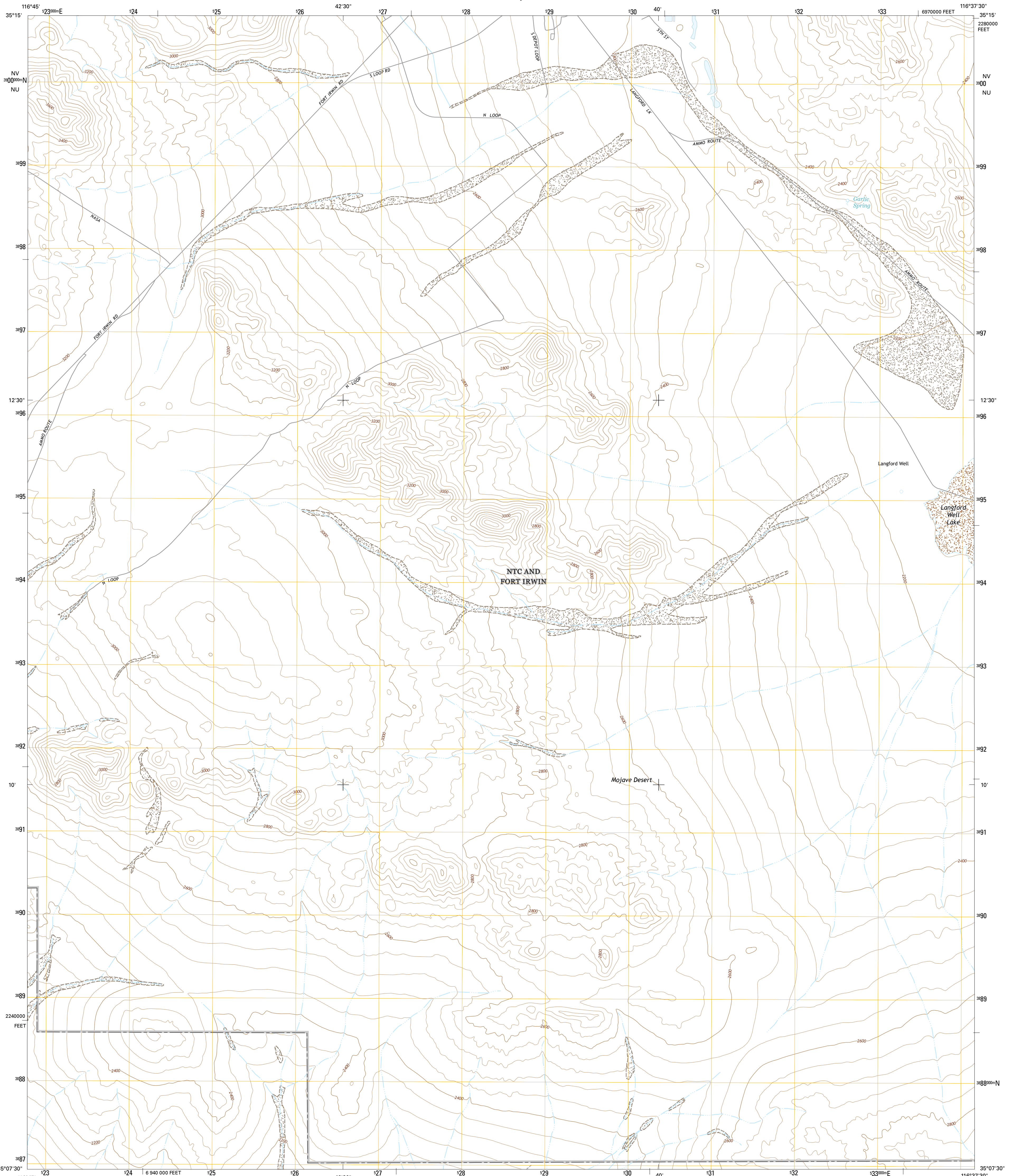




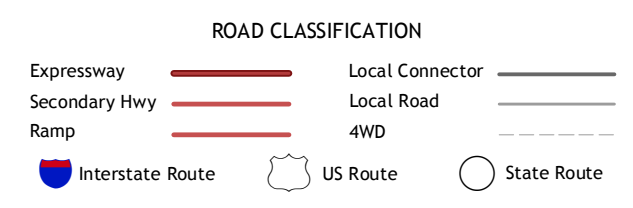
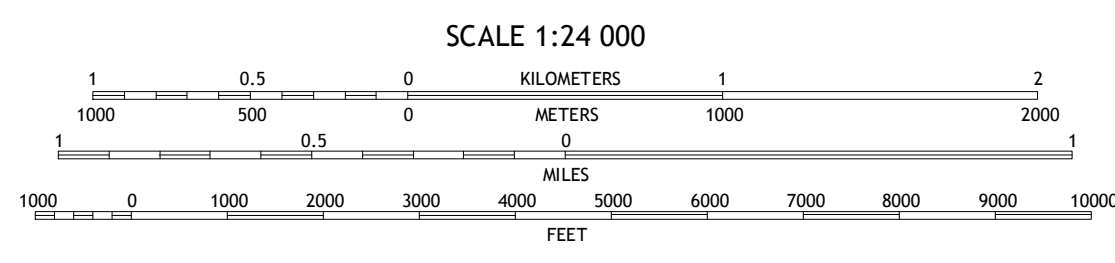
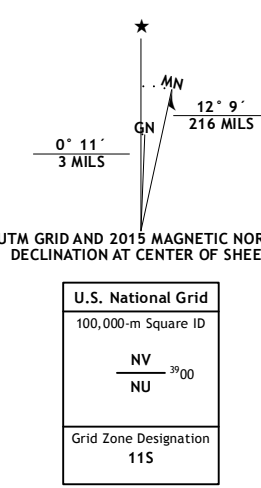
U.S. DEPARTMENT OF THE INTERIOR  
U.S. GEOLOGICAL SURVEY



LANGFORD WELL QUADRANGLE  
CALIFORNIA-SAN BERNARDINO CO.  
7.5-MINUTE SERIES



**Produced by the United States Geological Survey**  
 North American Datum of 1983 (NAD83)  
 World Geodetic System of 1984 (WGS84) Projection and  
 1 000-meter grid: Universal Transverse Mercator, Zone 11S  
 10 000-foot ticks: California Coordinate System of 1983 (zone 5)  
 This map is not a legal document. Boundaries may be  
 generalized for this map scale. Private lands within government  
 reservations may not be shown. Obtain permission before  
 entering private lands.



ADJOINING QUADRANGLES

1	2	3
4	5	6
7	8	

1 East of Goldstone  
 2 Fort Irwin  
 3 Tiefort Mountains  
 4 Paradise Range  
 5 East of Langford Well  
 6 Coyote Lake  
 7 Alford Mountain West  
 8 Alford Mountain East

LANGFORD WELL, CA  
2015

