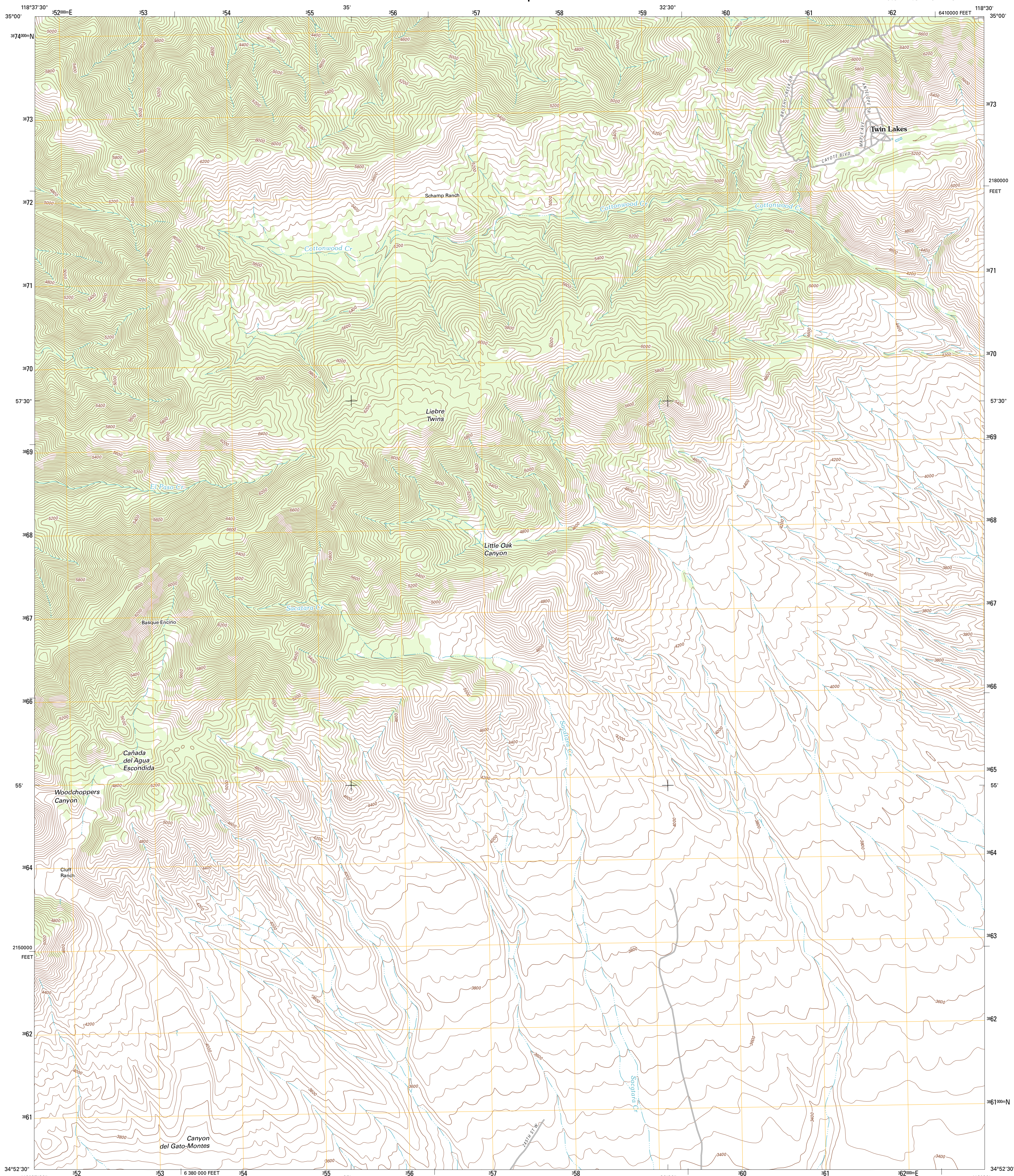




U.S. DEPARTMENT OF THE INTERIOR
U. S. GEOLOGICAL SURVEY

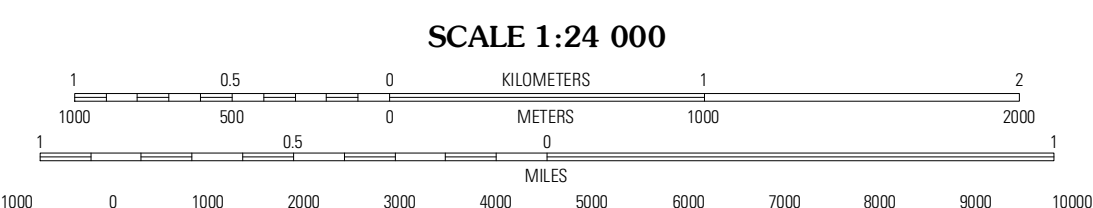
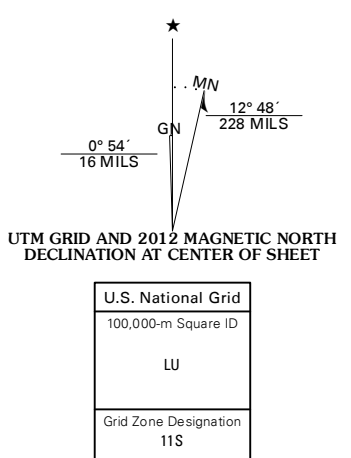


LIEBRE TWINS QUADRANGLE
CALIFORNIA-KERN CO.
7.5-MINUTE SERIES



Produced by the United States Geological Survey
North American Datum of 1983 (NAD83)
World Geodetic System of 1984 (WGS84), Projection and
1 000-meter grid; Universal Transverse Mercator, Zone 11S
10 000-foot ticks; California Coordinate System of 1983
(zone 5)

Imagery.....NAIP, June 2010 - July 2010
Roads.....6/2006-2011 TomTom
Names.....GNIS, 2011
Hydrography.....National Hydrography Dataset, 2010
Contours.....National Elevation Dataset, 2009
Boundaries.....Census, IBWC, IBC, USGS, 1972 - 2010



CONTOUR INTERVAL 40 FEET
NORTH AMERICAN VERTICAL DATUM OF 1988

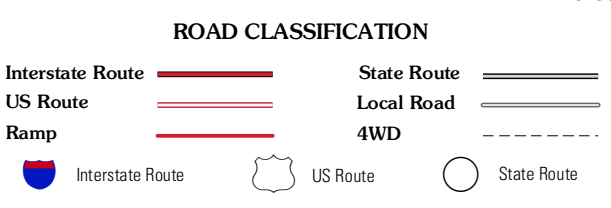
This map was produced to conform with the
National Geospatial Program US Topo Product Standard, 2011.
A metadata file associated with this product is draft version 0.6.1



QUADRANGLE LOCATION

Teton Ranch	Cummings Mountain	Tehachapi South
Winters Ridge	Liebre Twins	Tylerherse Canyon
La Liebre Ranch	Neenach School	Fairmont Butte

ADJOINING 7.5 QUADRANGLES



LIEBRE TWINS, CA
2012