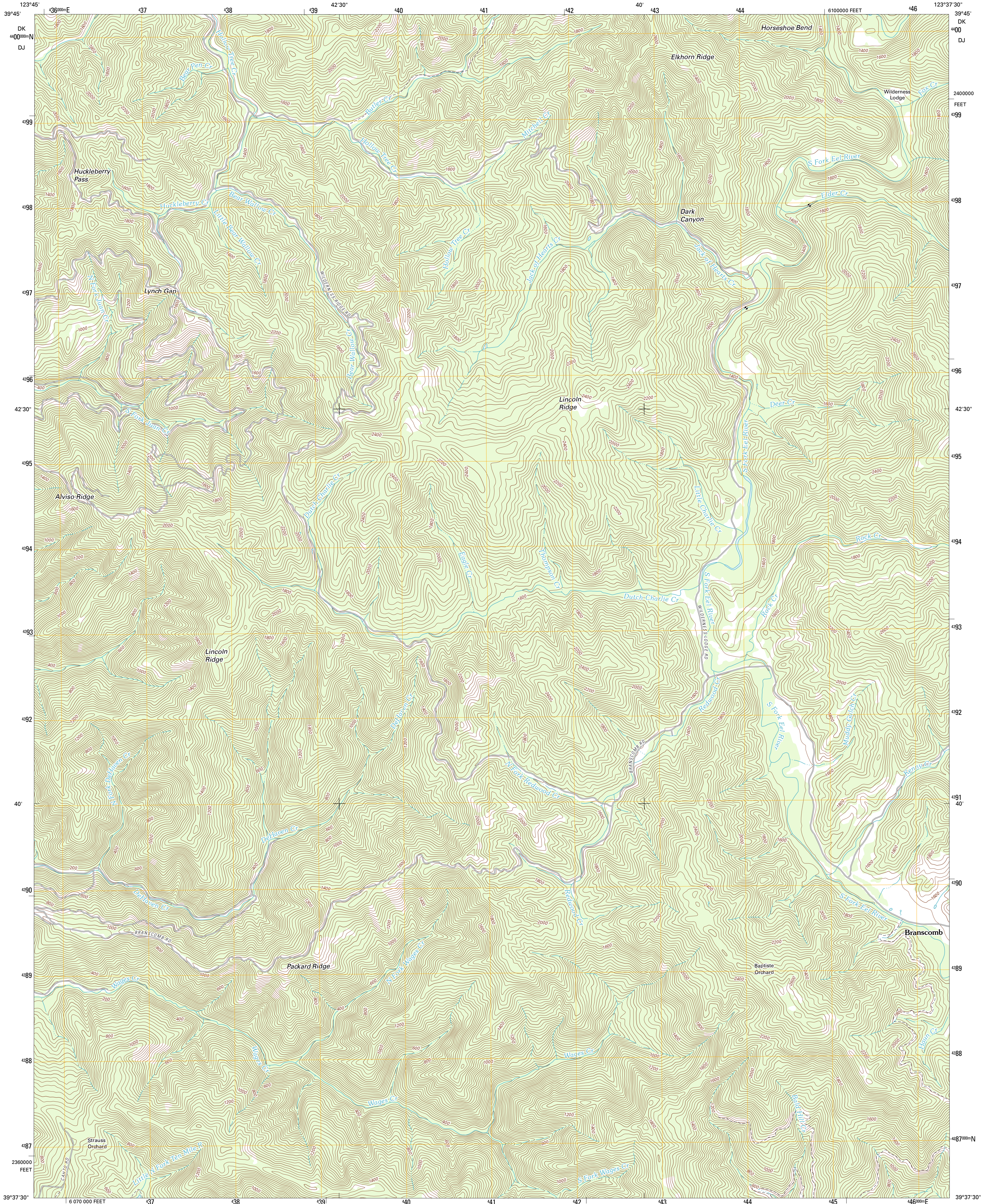




U.S. DEPARTMENT OF THE INTERIOR
U. S. GEOLOGICAL SURVEY

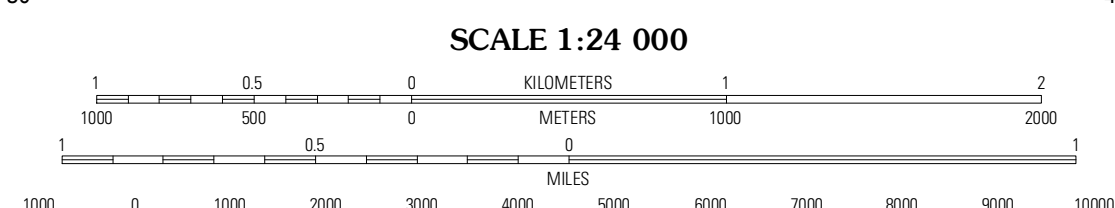
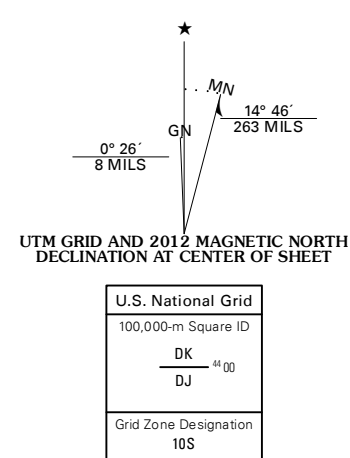


LINCOLN RIDGE QUADRANGLE
CALIFORNIA-MENDOCINO CO.
7.5-MINUTE SERIES



Produced by the United States Geological Survey
North American Datum of 1983 (NAD83)
World Geodetic System of 1984 (WGS84). Projection and
1 000-meter grid: Universal Transverse Mercator, Zone 10S
10 000-foot ticks: California Coordinate System of 1983
(zone 2)

Imagery.....N.A.I.P., June 2010
Roads.....©2006-2011 TomTom
Names.....GNIS, 2011
Hydrography.....National Hydrography Dataset, 2010
Contours.....National Elevation Dataset, 1999
Boundaries.....Census, BWC, BIC, USGS, 1972 - 2010



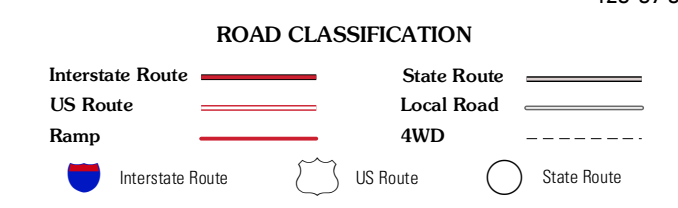
CONTOUR INTERVAL 40 FEET
NORTH AMERICAN VERTICAL DATUM OF 1988
This map was produced to conform with the
National Geospatial Program US Topo Product Standard, 2011.
A metadata file associated with this product is draft version 0.6.1



QUADRANGLE LOCATION

| | | |
|-------------|-----------------|---------------|
| Hales Grove | Leggett | Tan Oak Park |
| Westport | Lincoln Ridge | Castro Peak |
| Ingham | Dutchmans Knoll | Sherwood Peak |

ADJOINING 7.5' QUADRANGLES



LINCOLN RIDGE, CA
2012