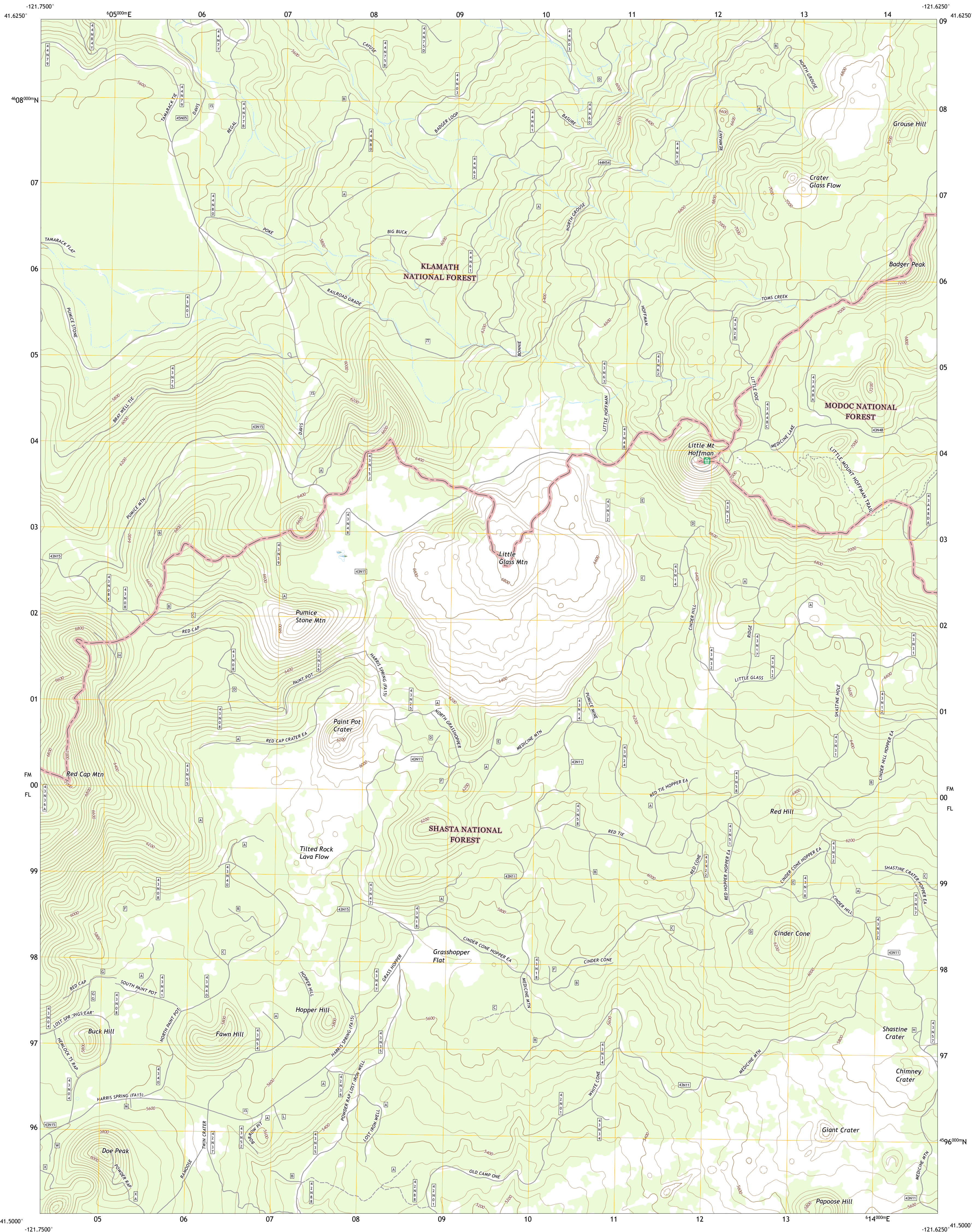




U.S. DEPARTMENT OF THE INTERIOR
U.S. GEOLOGICAL SURVEY

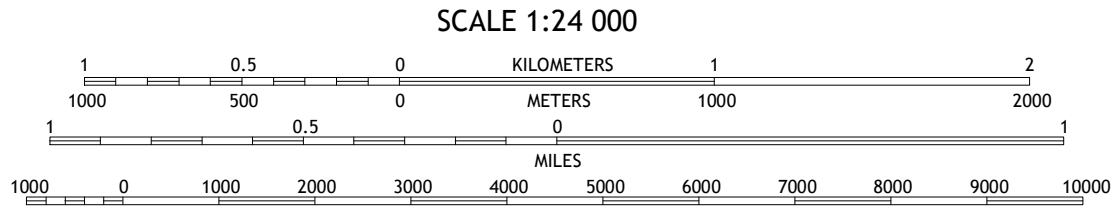
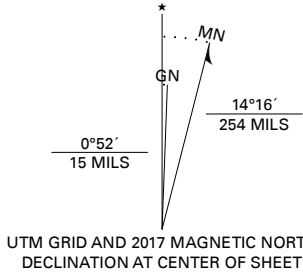


LITTLE GLASS MOUNTAIN QUADRANGLE
CALIFORNIA - SISKIYOU COUNTY
7.5-MINUTE SERIES



Produced by the United States Geological Survey
North American Datum of 1983 (NAD83)
World Geodetic System of 1984 (WGS84). Projection and
1 000-meter grid/Universal Transverse Mercator, Zone 10T
This map is not a legal document. Boundaries may be
generalized for this map scale. Private lands within government
reservations may not be shown. Obtain permission before
entering private lands.

Imagery.....N.A.P., August 2016 - October 2016
Roads.....U.S. Census Bureau, 2018
Roads within US Forest Service Lands.....FSTopo
Data with limited Forest Service updates, 2018
Names.....GNIS, 1981 - 2000
Hydrography.....National Hydrography Dataset, 2002 - 2012
Contours.....National Elevation Dataset, 2001
Boundaries.....Multiple sources: see metadata file 2016
Public Land Survey System.....BLM, 2018
Wetlands.....FWS National Wetlands Inventory, 1981



CONTOUR INTERVAL 40 FEET
NORTH AMERICAN VERTICAL DATUM OF 1988
This map was produced to conform with the
National Geospatial Program US Topo Product Standard, 2011.
A metadata file associated with this product is draft version 0.6.18



1	2	3	1 Sharp Mountain
4	5	2 Bonita Butte	
6	7	3 Schonchin Butte	
		4 Garner Mountain	
		5 Medicine Lake	
		6 Horse Peak	
		7 Snag Hill	
		8 Porcupine Butte	

ADJOINING QUADRANGLES

ROAD CLASSIFICATION	
Expressway	Local Connector
Secondary Hwy	Local Road
Ramp	4WD
Interstate Route	US Route
FS Primary Route	FS Passenger Route
	FS High Clearance Route

Check with local Forest Service unit
for current travel conditions and restrictions.

LITTLE GLASS MOUNTAIN, CA
2018

