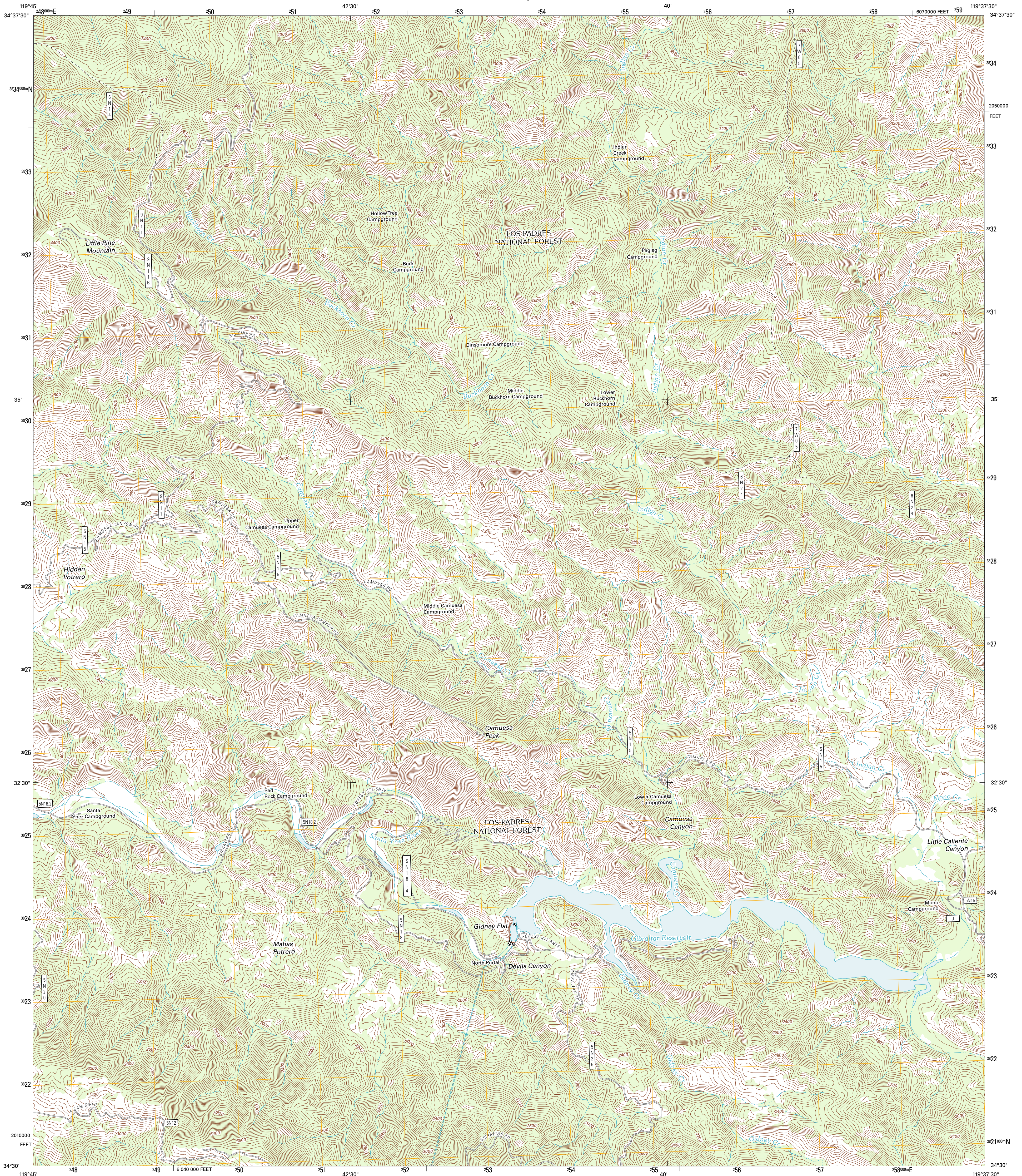




U.S. DEPARTMENT OF THE INTERIOR
U. S. GEOLOGICAL SURVEY

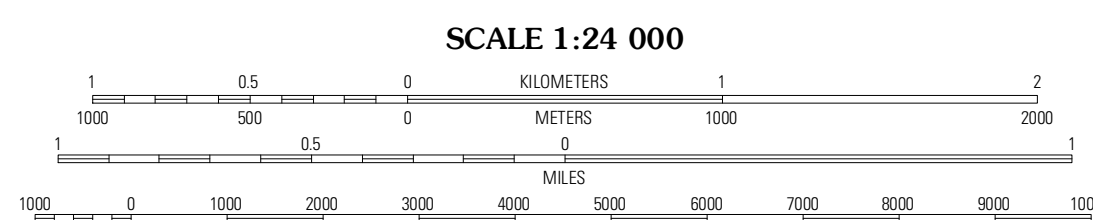
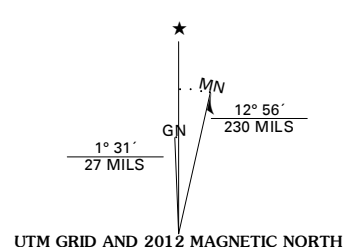


LITTLE PINE MOUNTAIN QUADRANGLE
CALIFORNIA-SANTA BARBARA CO.
7.5-MINUTE SERIES



Produced by the United States Geological Survey
North American Datum of 1983 (NAD83)
World Geodetic System of 1984 (WGS84). Projection and
1 000-meter grid; Universal Transverse Mercator, Zone 11S
10 000-foot ticks; California Coordinate System of 1983
(zone 5)

Imagery.....NAIP, June 2010
Roads.....©2006-2011 TomTom
Roads within US Forest Service Lands.....FS Topo Data
with limited Forest Service updates, 2009
Names.....GNIS, 2011
Hydrography.....National Hydrography Dataset, 2010
Contours.....National Elevation Dataset, 2005
Boundaries.....Census, BWC, IBC, USGS, 1972 - 2010



CONTOUR INTERVAL 40 FEET
NORTH AMERICAN VERTICAL DATUM OF 1988

This map was produced to conform with the
National Geospatial Program US Topo Product Standard, 2011.
A metadata file associated with this product is draft version 0.6.1



QUADRANGLE LOCATION

San Rafael Mountain	Big Pine Mountain	Mudlake Peak
San Marcos Pass	Little Pine Mountain	Hildreth Peak
Goleta	Santa Barbara	Carpinteria

ADJOINING 7.5 QUADRANGLES

ROAD CLASSIFICATION

- Interstate Route
- US Route
- Ramp
- State Route
- Local Road
- 4WD
- FS Primary Route
- FS Passenger Route
- FS High Clearance Route

Check with local Forest Service unit for current travel conditions and restrictions.

LITTLE PINE MOUNTAIN, CA
2012