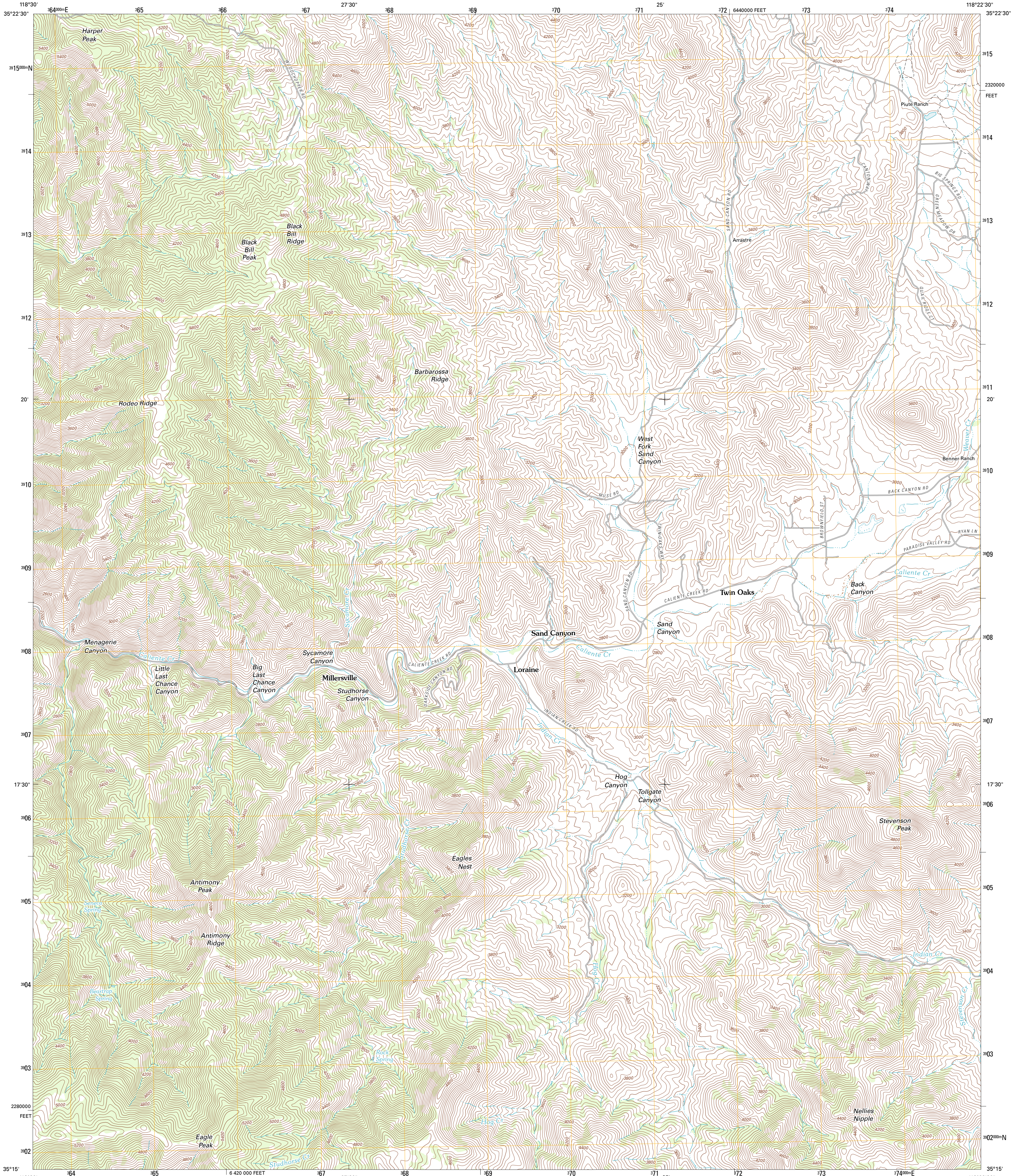




U.S. DEPARTMENT OF THE INTERIOR
U. S. GEOLOGICAL SURVEY

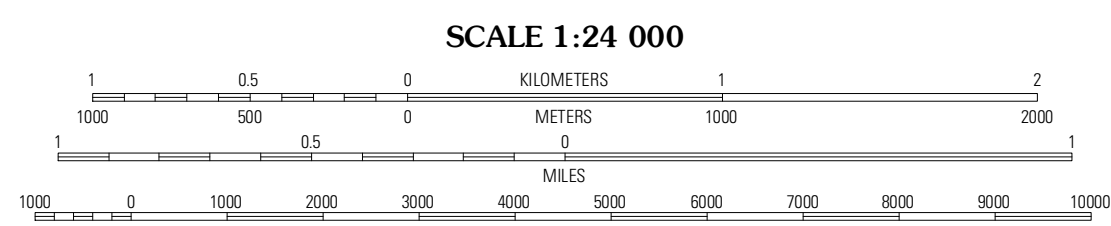
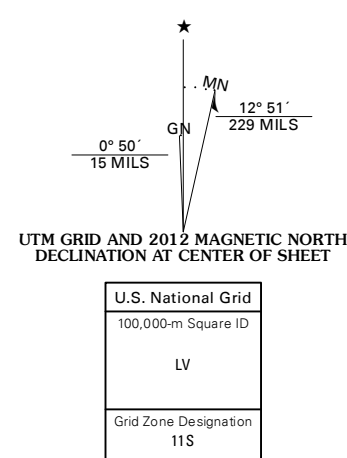


LORAINES QUADRANGLE
CALIFORNIA-KERN CO.
7.5-MINUTE SERIES



Produced by the United States Geological Survey
North American Datum of 1983 (NAD83)
World Geodetic System of 1984 (WGS84). Projection and
1 000-meter grid: Universal Transverse Mercator, Zone 11S
10 000-foot ticks: California Coordinate System of 1983
(zone 5)

Imagery: NAIP, August 2010
Roads: ©2006-2011 TomTom
Names: GNS, 2011
Hydrography: National Hydrography Dataset, 2010
Contours: National Elevation Dataset, 2006
Boundaries: Census, IBWC, IBC, USGS, 1972-2010



CONTOUR INTERVAL 40 FEET
NORTH AMERICAN VERTICAL DATUM OF 1988

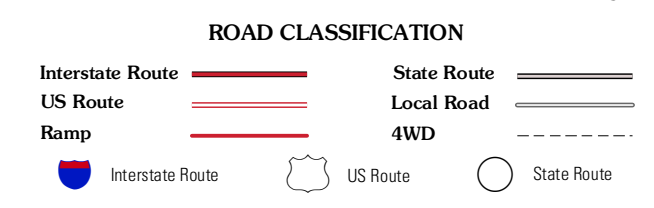
This map was produced to conform with the
National Geospatial Program US Topo Product Standard, 2011.
A metadata file associated with this product is draft version 0.6.1



QUADRANGLE LOCATION

Becknidge Mountain	Plute Peak	Clarville
Oler Peak	Loraine	Esmerald Mountain
Keene	Tehachapi North	Tehachapi NE

ADJOINING 7.5' QUADRANGLES



LORAINES, CA
2012