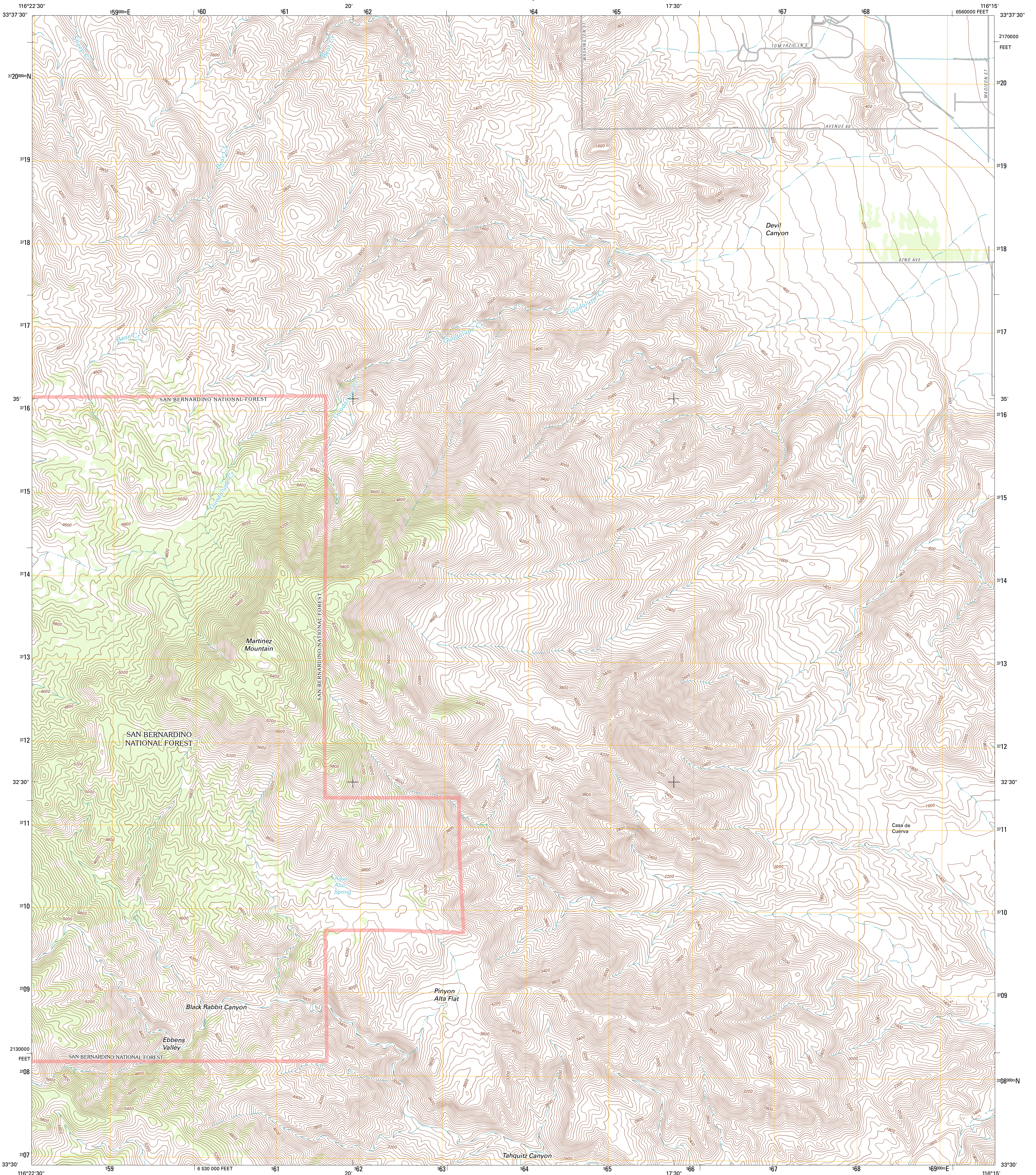




U.S. DEPARTMENT OF THE INTERIOR  
U. S. GEOLOGICAL SURVEY



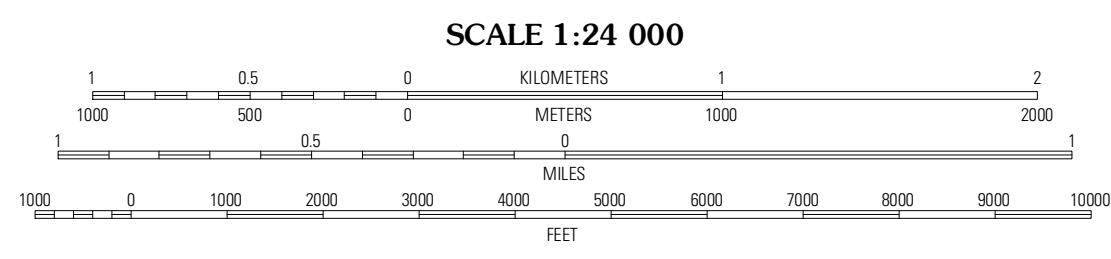
MARTINEZ MOUNTAIN QUADRANGLE  
CALIFORNIA-RIVERSIDE CO.  
7.5-MINUTE SERIES



Produced by the United States Geological Survey  
North American Datum of 1983 (NAD83)  
World Geodetic System of 1984 (WGS84) Projection and  
1 000-meter grid; Universal Transverse Mercator, Zone 11S  
10 000-foot ticks; California Coordinate System of 1983  
(zone 6)

UTM GRID AND 2012 MAGNETIC NORTH  
DECLINATION AT CENTER OF SHEET

U.S. National Grid  
100,000-m Square ID  
NT  
Grid Zone Designation  
11S



CONTOUR INTERVAL 40 FEET  
NORTH AMERICAN VERTICAL DATUM OF 1988

This map was produced to conform with the  
National Geospatial Program US Topo Product Standard, 2011.  
A metadata file associated with this product is draft version 0.6.1



QUADRANGLE LOCATION

Rancho Mirage	La Quinta	Indio
Toro Peak	Martinez Mountain	Valerie
Collins Valley	Clark Lake NE	Rabbit Peak

**ROAD CLASSIFICATION**

Interstate Route (thick red line)  
US Route (red line)  
Ramp (red line with blue triangle)

State Route (thin red line)  
Local Road (black line)  
4WD (dashed black line)

FS Primary Route (blue line with white box)  
FS Passenger Route (blue line with white box)  
FS High Clearance Route (blue line with white box)

Check with local Forest Service unit  
for current travel conditions and restrictions.

MARTINEZ MOUNTAIN, CA  
2012

ADJOINING 7.5 QUADRANGLES