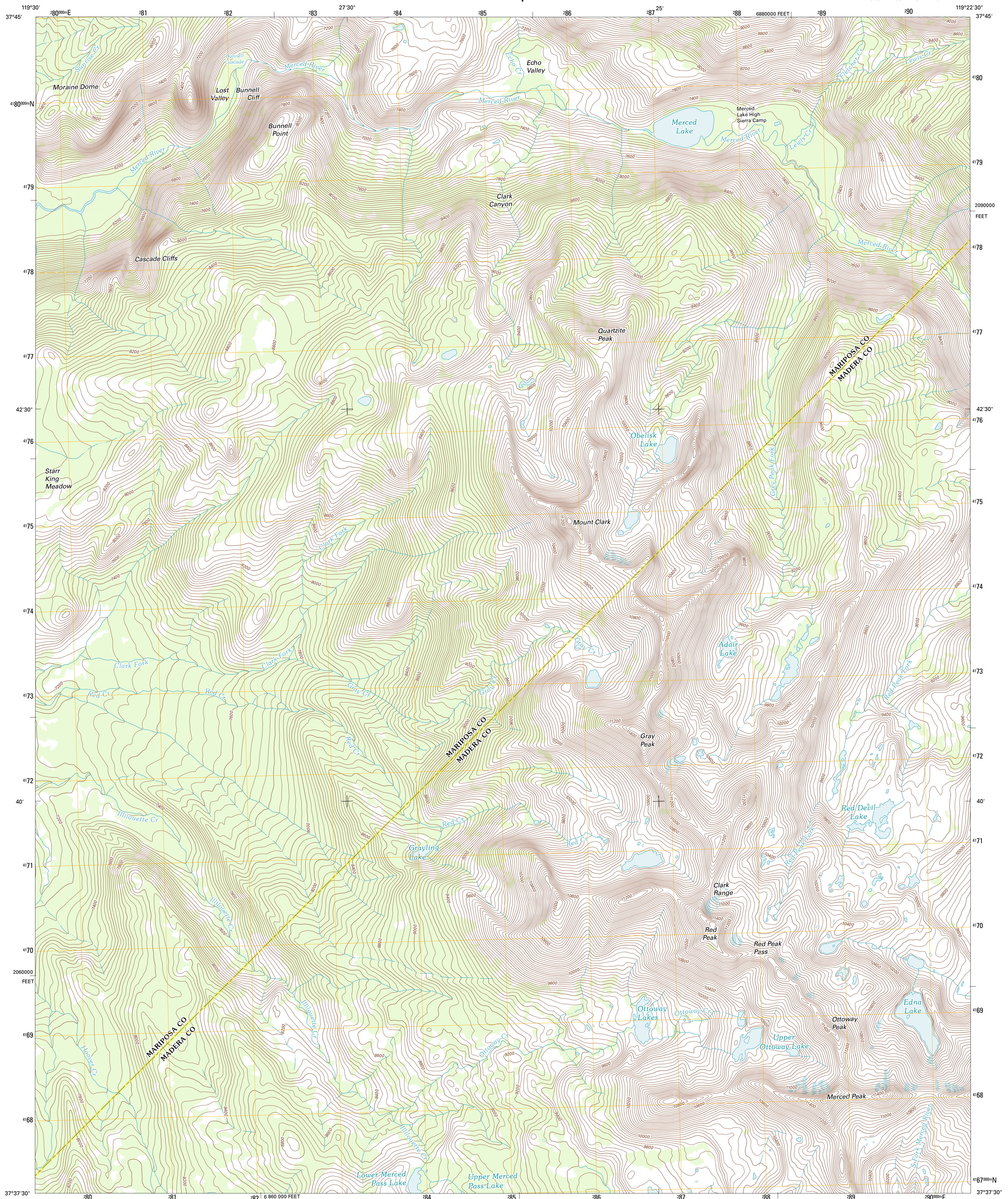




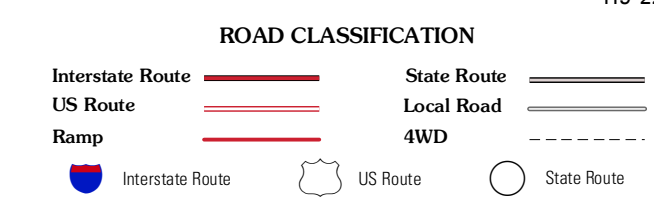
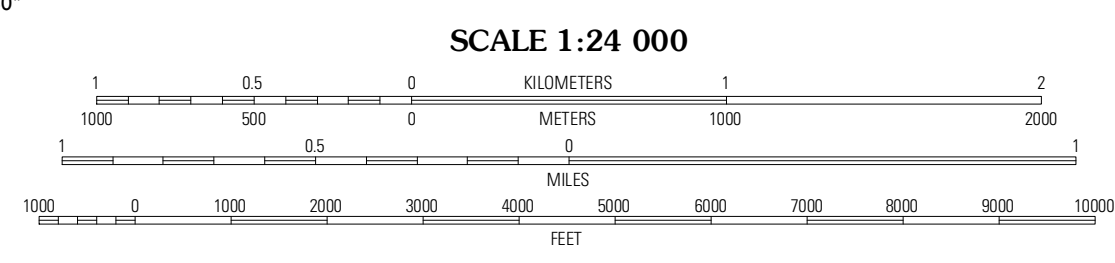
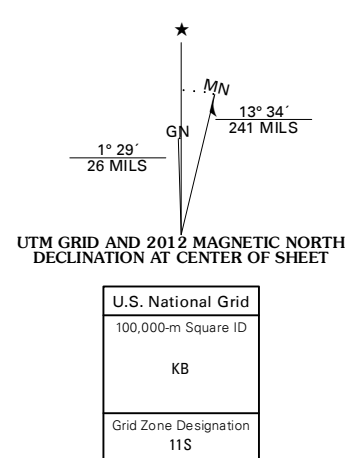
U.S. DEPARTMENT OF THE INTERIOR  
U. S. GEOLOGICAL SURVEY



MERCED PEAK QUADRANGLE  
CALIFORNIA  
7.5-MINUTE SERIES



Produced by the United States Geological Survey  
North American Datum of 1983 (NAD83)  
World Geodetic System of 1984 (WGS84), Projection and  
1 000-meter grid; Universal Transverse Mercator, Zone 11S  
10 000-foot ticks; California Coordinate System of 1983  
(zone 3)



QUADRANGLE LOCATION

Yosemite Falls	Tenaya Lake	Vogelsang Peak
Half Dome	Merced Peak	Mount Lyell
Mariposa Grove	Sing Peak	Timber Knob

ADJOINING 7.5' QUADRANGLES

CONTOUR INTERVAL 40 FEET  
NORTH AMERICAN VERTICAL DATUM OF 1988

This map was produced to conform with the  
National Geospatial Program US Topo Product Standard, 2011.  
A metadata file associated with this product is draft version 0.6.1

MERCED PEAK, CA  
2012