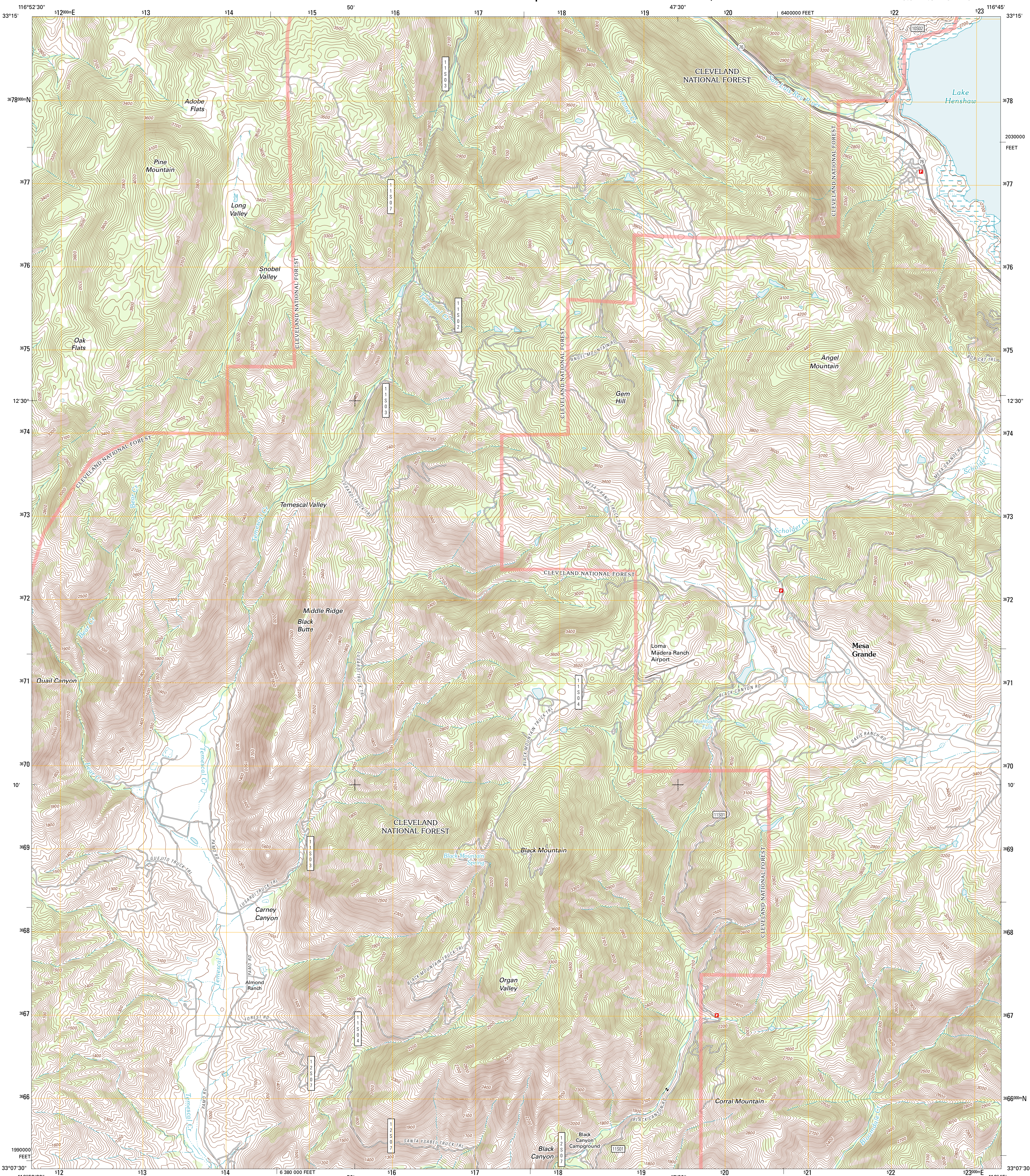




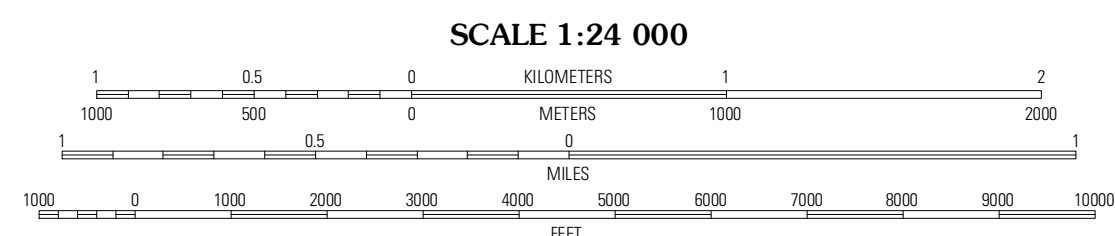
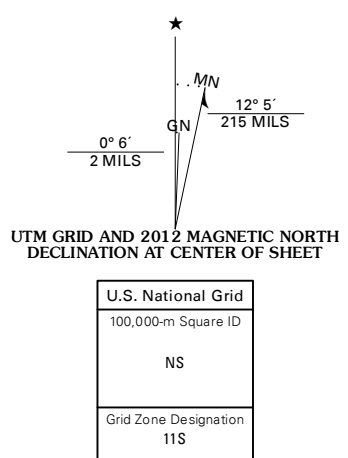
U.S. DEPARTMENT OF THE INTERIOR
U. S. GEOLOGICAL SURVEY



MESA GRANDE QUADRANGLE
CALIFORNIA-SAN DIEGO CO.
7.5-MINUTE SERIES



Produced by the United States Geological Survey
North American Datum of 1983 (NAD83)
World Geodetic System of 1984 (WGS84). Projection and
1 000-foot ticks: Universal Transverse Mercator, Zone 11S
(zone 6)



CONTOUR INTERVAL 20 FEET
NORTH AMERICAN VERTICAL DATUM OF 1988

This map was produced to conform with the
National Geospatial Program US Topo Product Standard, 2011.
A metadata file associated with this product is draft version 0.6.1



QUADRANGLE LOCATION

Boucher Hill	Palomar Observatory	Warner Springs
Rodriguez Mountain	Mesa Grande	Warner Ranch
San Pasqual	Ramona	Santa Ysabel

ROAD CLASSIFICATION

- Interstate Route (Red double line)
- US Route (Red single line)
- Ramp (Red dashed line)
- State Route (Black dashed line)
- Local Road (Black solid line)
- 4WD (Black dashed line with '4WD' label)
- FS Primary Route (Blue dashed line)
- FS Passenger Route (Blue dashed line)
- FS High Clearance Route (Blue dashed line)

Check with local Forest Service unit for current travel conditions and restrictions.

Imagery: NIP, May 2010
Roads: 2006-2011 TomTom
Roads within US Forest Service Lands: FSTopo Data with limited Forest Service updates, 2009
Names: GNS, 2011
Hydrography: National Hydrography Dataset, 2010
Contours: National Elevation Dataset, 2006
Boundaries: Census, IBWC, IBC, USGS, 1972 - 2010

MESA GRANDE, CA
2012

ADJOINING 7.5 QUADRANGLES